



New Jan. 12, 2023: Congestion Impacts Detail

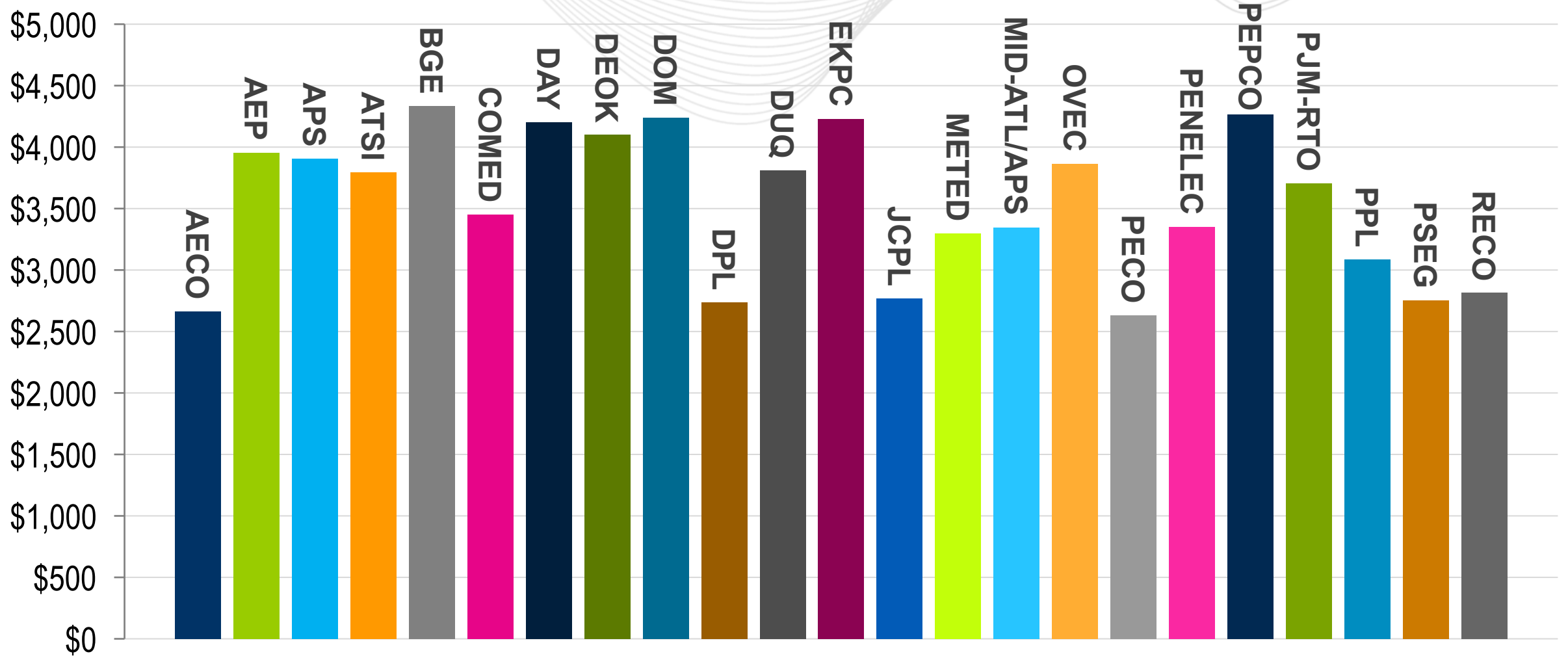
Equipment Name (500 KV and Above)*	Zone	No. of Intervals at TCPF	Est. Time Frame (EPT)	
			Dec. 23	Dec. 24
TRANSFER INTERFACE: AEP-DOM	N/A	129	9:35-22:30	0:05-23:50
JUNIATA 1 XFORMER H 500 KV	PPL	73	19:20-21:25	1:30 4:35-09:55
CONASTON-PEACHBOT 5012B 500 KV	BC	21	22:20-23:45	0:40
CABOT-KEYSTONE 5002B 500 KV	APS	1	12:25	
BROADFO2 T6 XFORMER H 765 KV	AEP	28	9:15-11:10 12:35-12:45, 12:55	

*Complete list of binding constraints available at Data Miner

Key Takeaway: High voltage constraints have a broader system impact on locational pricing.



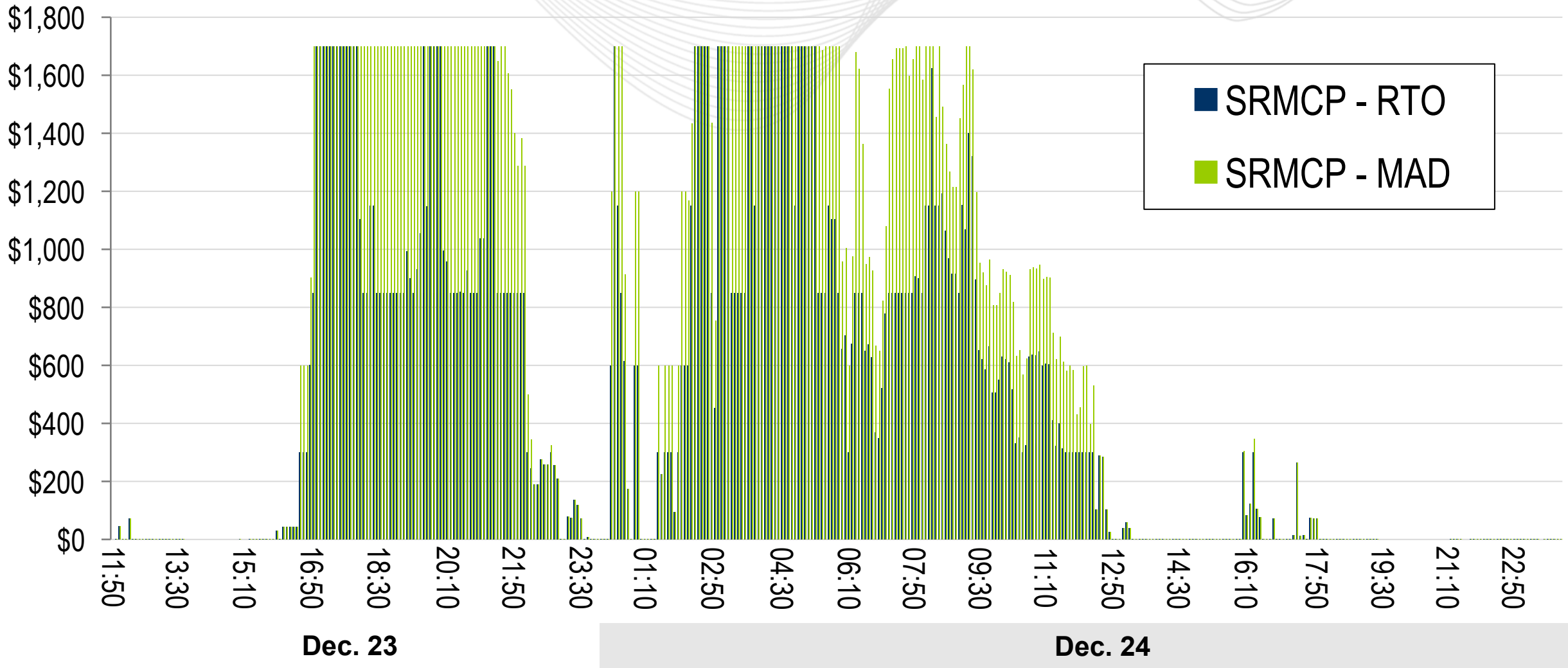
New Jan. 12, 2023: Total Hourly Zonal LMP – Dec. 23 17:00





Synch Reserve Market Clearing Price (SRMCP)

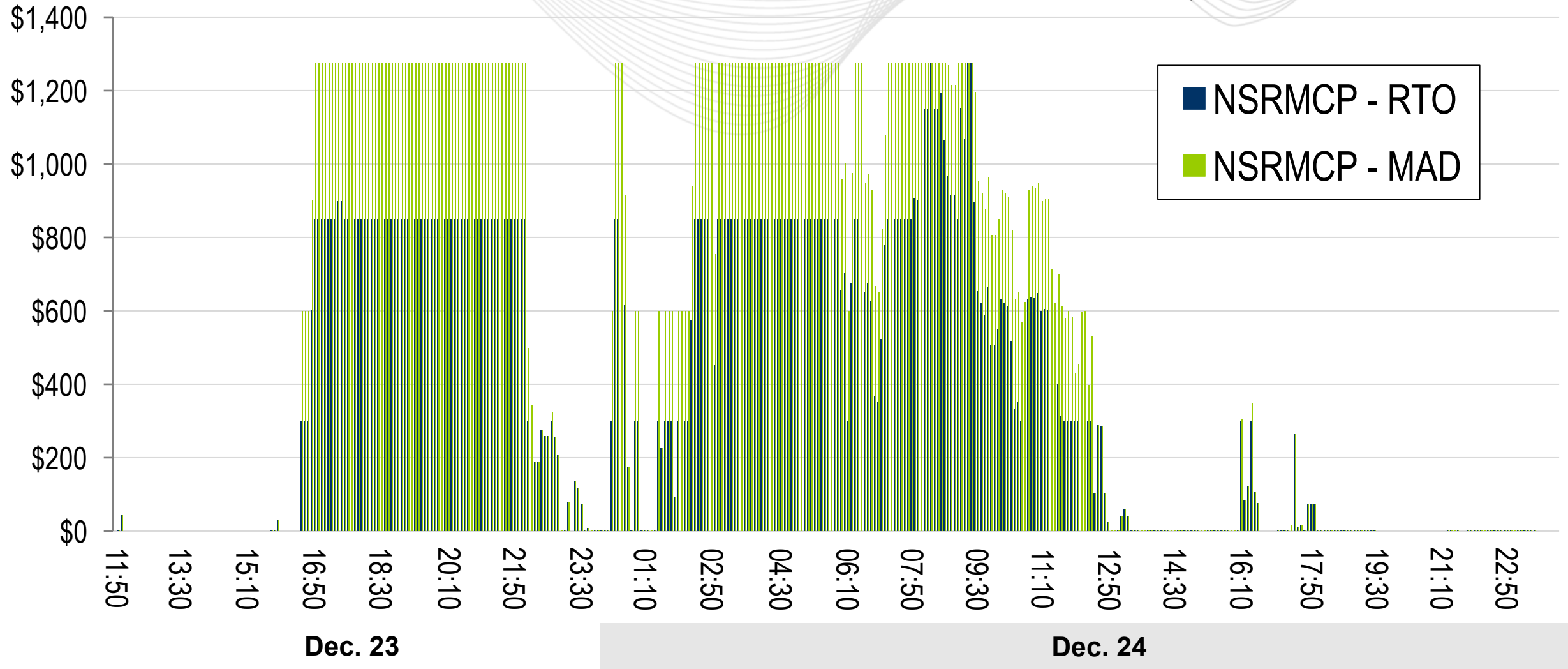
New Jan. 12, 2023: Interval Detail





Non-Synch Reserve Market Clearing Price (NSRMCP)

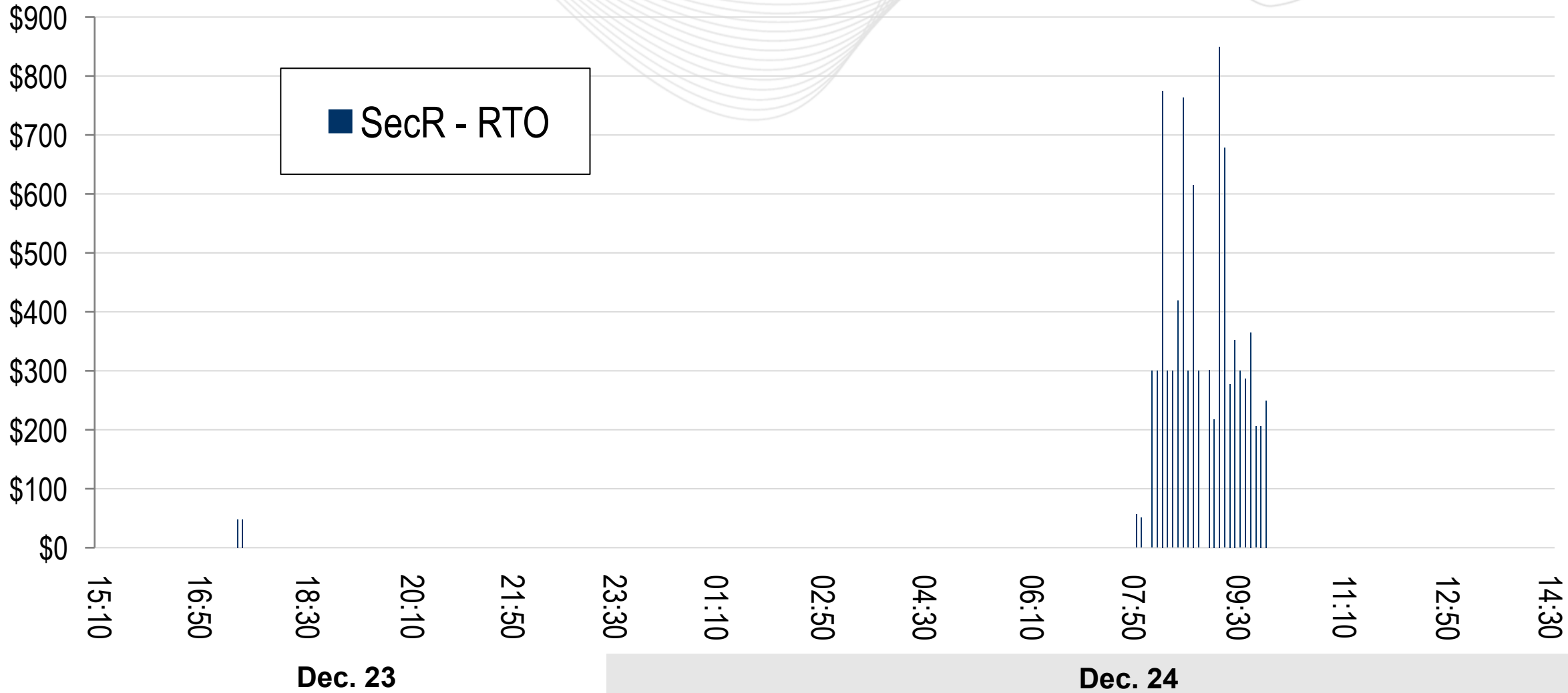
New Jan. 12, 2023: Interval Detail





Secondary Reserve Market Clearing Price (SecRMCP)

New Jan. 12, 2023: Interval Detail



**PROTECT THE
POWER GRID
THINK BEFORE
YOU CLICK!**



Be alert to
malicious
phishing emails.

Report suspicious email activity to PJM.
(610) 666-2244 / it_ops_ctr_shift@pjm.com

