



# Net Energy Injections at Load Busses Quarterly Report

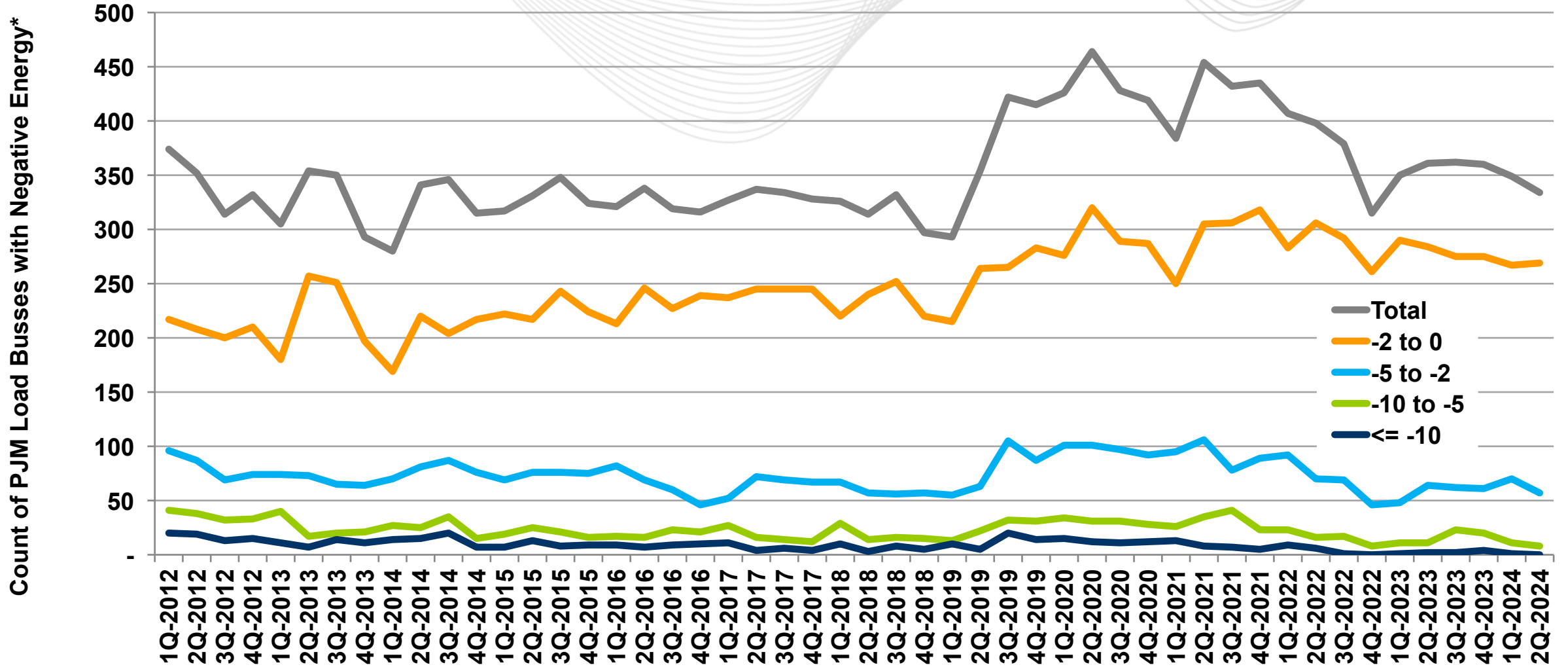
Ken Schuyler,  
Manager Renewable Services

Market Implementation Committee  
August 7, 2024

- Follow up effort to the Net Energy Metering Senior Task Force (NEMSTF) recommendation
  - PJM will implement a quarterly review to track and trend overall incidents of net energy injections at load busses
- PJM Manual 28 Requirement
  - PJM will assess and trend quarterly the degree of net energy injections at load busses modeled in the PJM network system model (i.e., reverse power flows) in order to detect and correct any modeling issues and to identify any generation in excess of load that appears at a load bus.
- PJM continues to track this data to improve its EMS Network Model. To date, trends have not been indicative of an underlying Net Energy Metering issue.



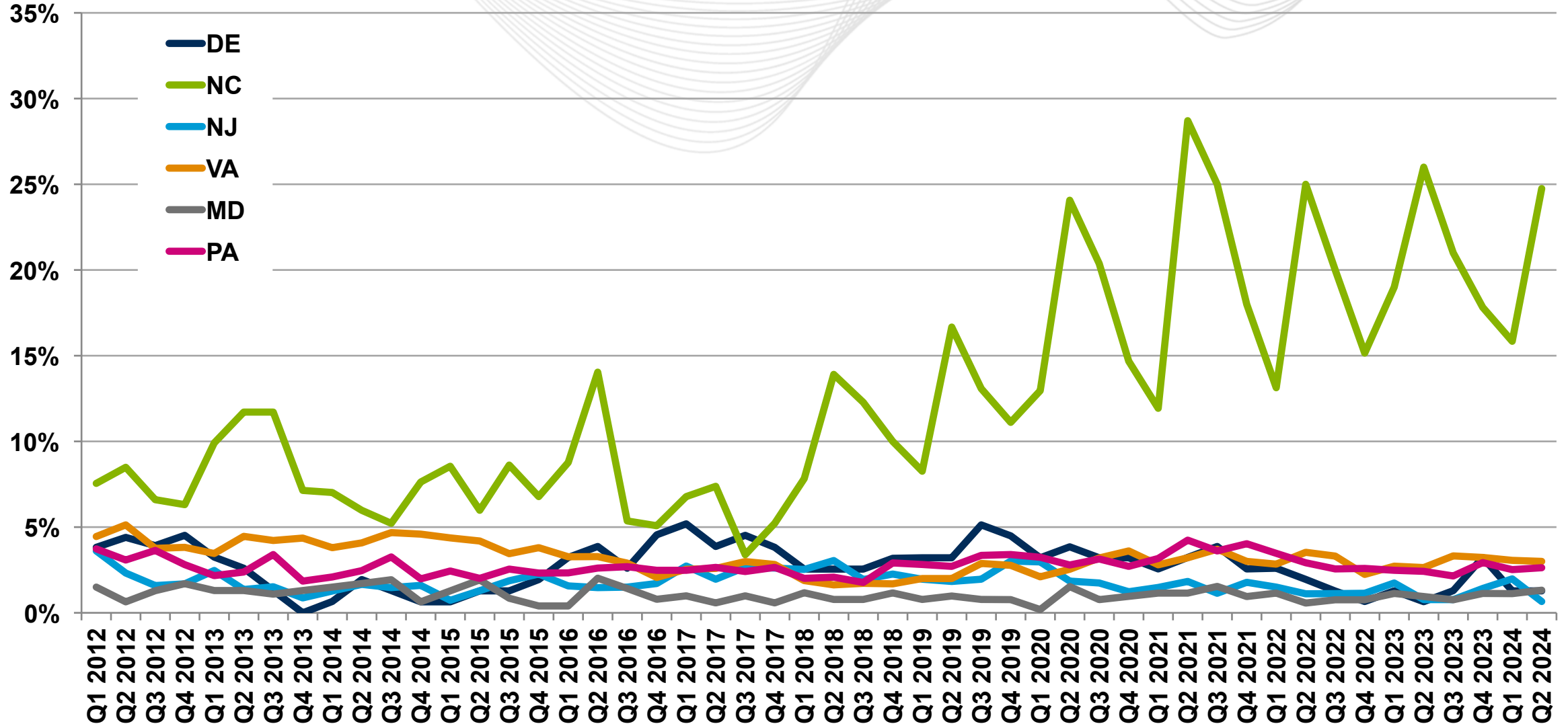
# PJM Load Busses with Negative Energy on Average



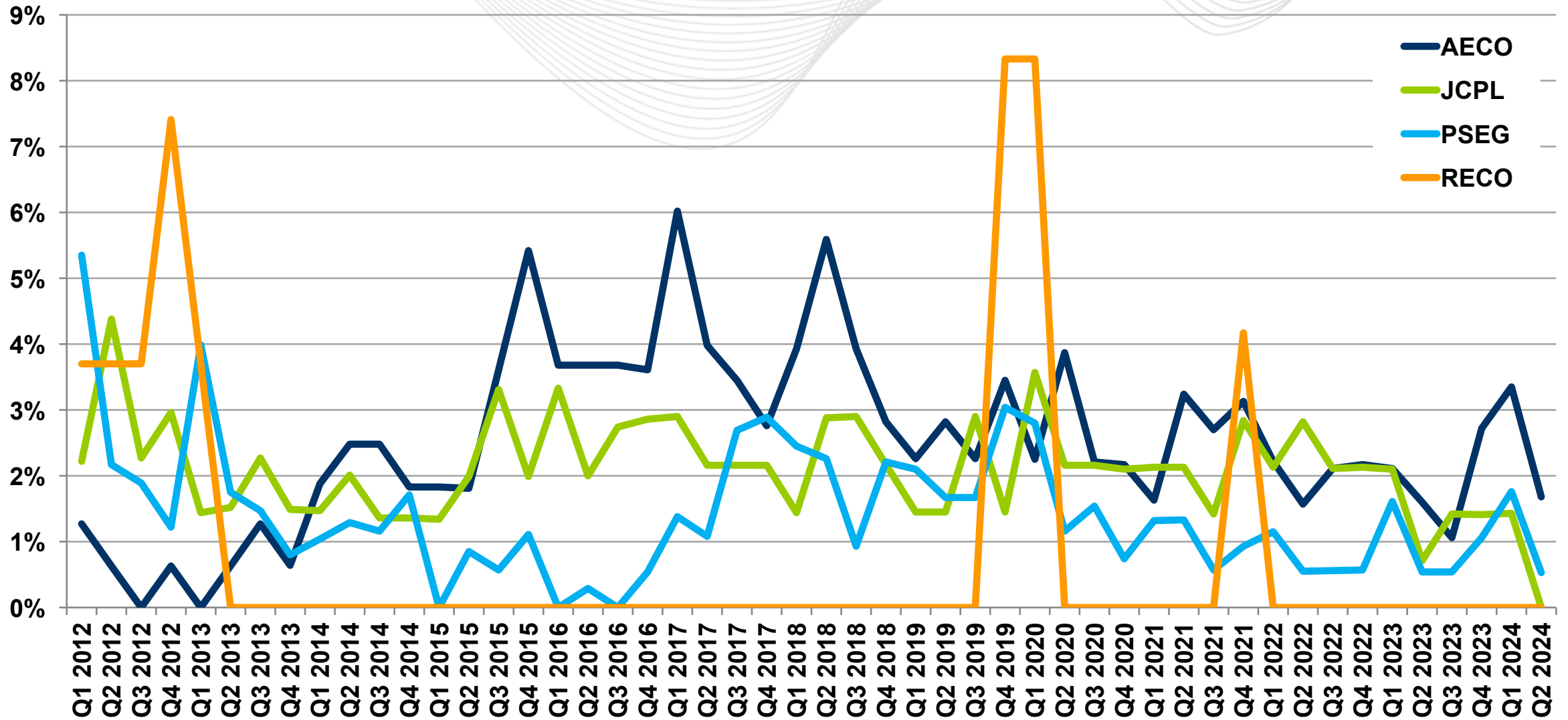
\* The total number of PJM load buses is 10,980 as of the most recent model build.



# Mid-Atlantic State Load Busses with Negative Energy on Average



# New Jersey Load Busses with Negative Energy on Average



1	2	3
<ul style="list-style-type: none"> <li>The total number of load busses with negative energy on average decreased 4.3% in Q2 2024 compared to the previous quarter, and decreased 7.5% compared to the same quarter last year (slide 3).</li> </ul>	<ul style="list-style-type: none"> <li>The total number of load busses with negative energy on average in Q2 2024 is about 11% lower than when PJM started tracking in 2012 (334 vs 374), even though the total number of load busses (10,980) has increased 36% over that twelve-year period (slide 3).</li> </ul>	<ul style="list-style-type: none"> <li>As expected, NC had an increase in the number of negative load busses in Q2 2024. This has occurred every year for the past several years. This pattern is attributable to utility-scale solar facilities that are not participating in the PJM Market (slide 4).</li> </ul>

Facilitator:  
Foluso Afelumo,  
[Foluso.Afelumo@pjm.com](mailto:Foluso.Afelumo@pjm.com)

Secretary:  
Amanda Martin,  
[Amanda.Martin@pjm.com](mailto:Amanda.Martin@pjm.com)

SME/Presenter:  
Ken Schuyler,  
[Ken.Schuyler@pjm.com](mailto:Ken.Schuyler@pjm.com)



### Member Hotline

(610) 666 – 8980

(866) 400 – 8980

[custsvc@pjm.com](mailto:custsvc@pjm.com)

## Net Energy Injections at Load Busses

Acronym	Term & Definition
<b>NEMSTF</b>	<b>Net Energy Metering Senior Task Force</b> . Closed in 2012, the NEMSTF under the auspices of the PJM Markets and Reliability Committee, was created to work with the appropriate PJM personnel and other stakeholders to recommend necessary modifications to tariffs, PJM manuals, and PJM business rules as well as support the scoping and conceptual design of the potential changes to settlements systems and the generator interconnection process.

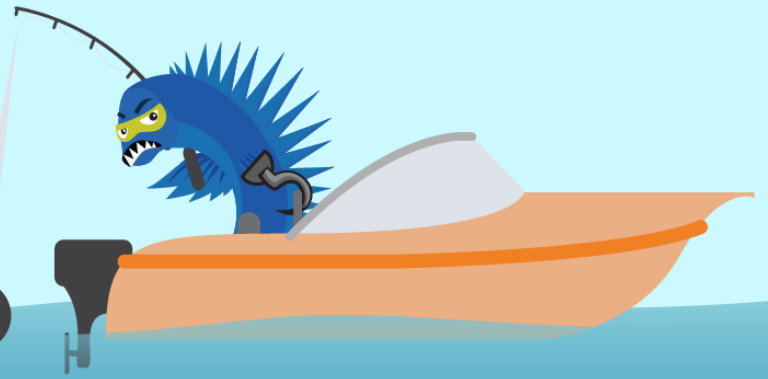


**PROTECT THE  
POWER GRID**

**THINK BEFORE  
YOU CLICK!**



**BE ALERT TO  
MALICIOUS PHISHING  
EMAILS**



**Report suspicious email activity to PJM.  
Call (610) 666-2244 or email [it\\_ops\\_ctr\\_shift@pjm.com](mailto:it_ops_ctr_shift@pjm.com)**