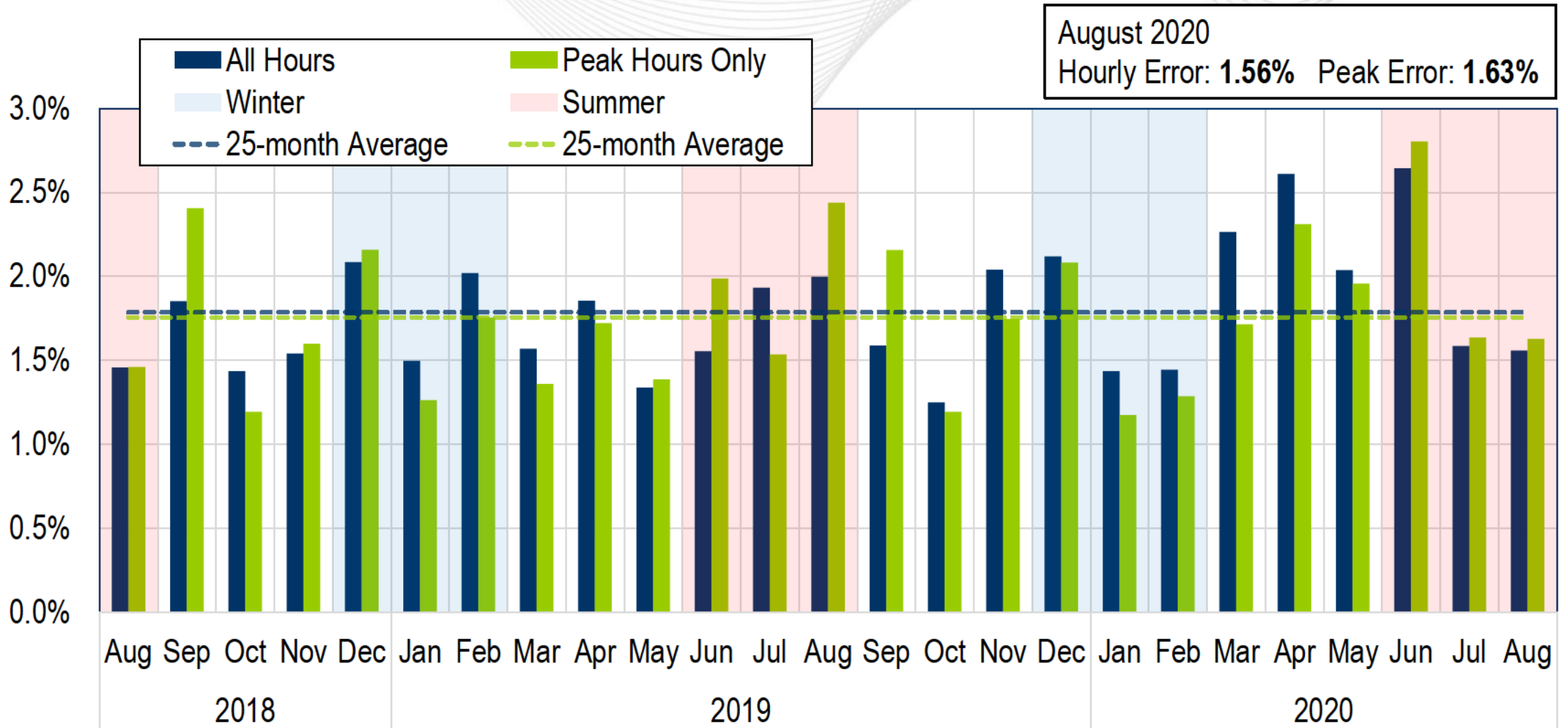


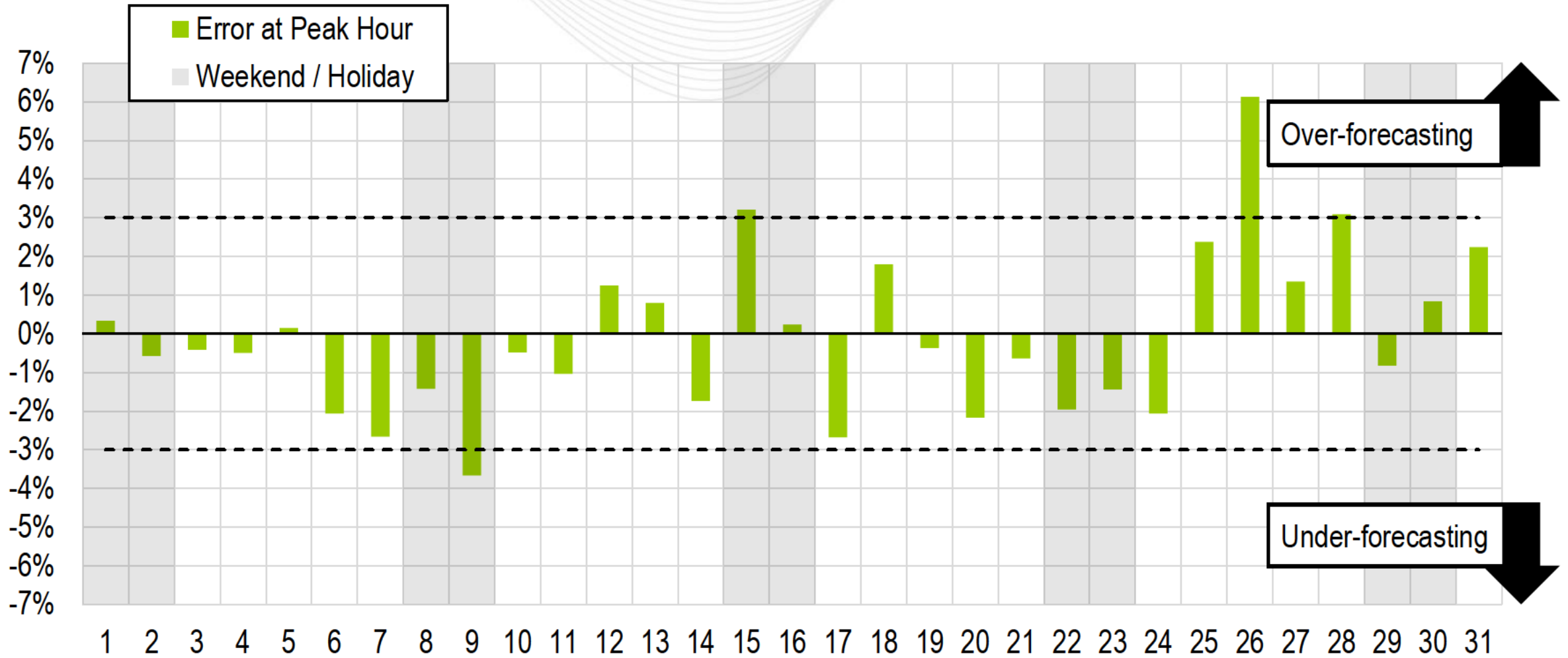


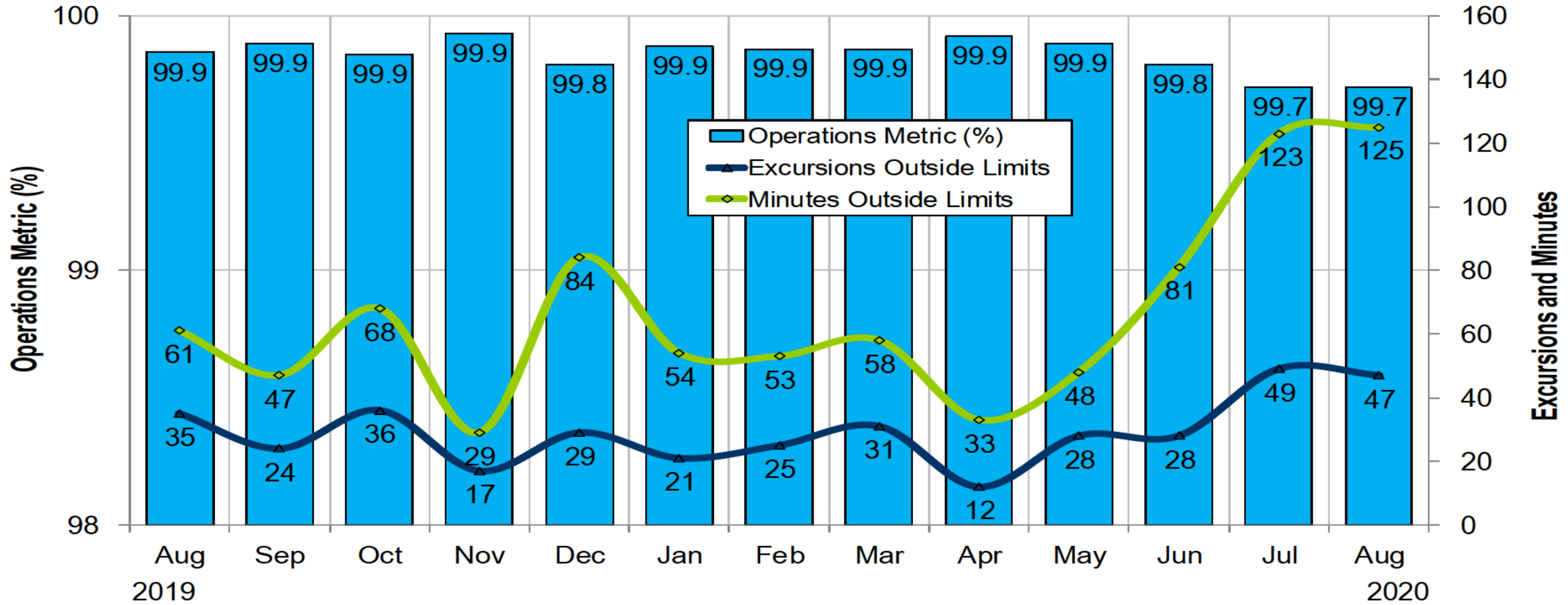
# System Operations Report

Stephanie Monzon  
Manager, Markets Coordination  
Operating Committee  
September 3, 2020



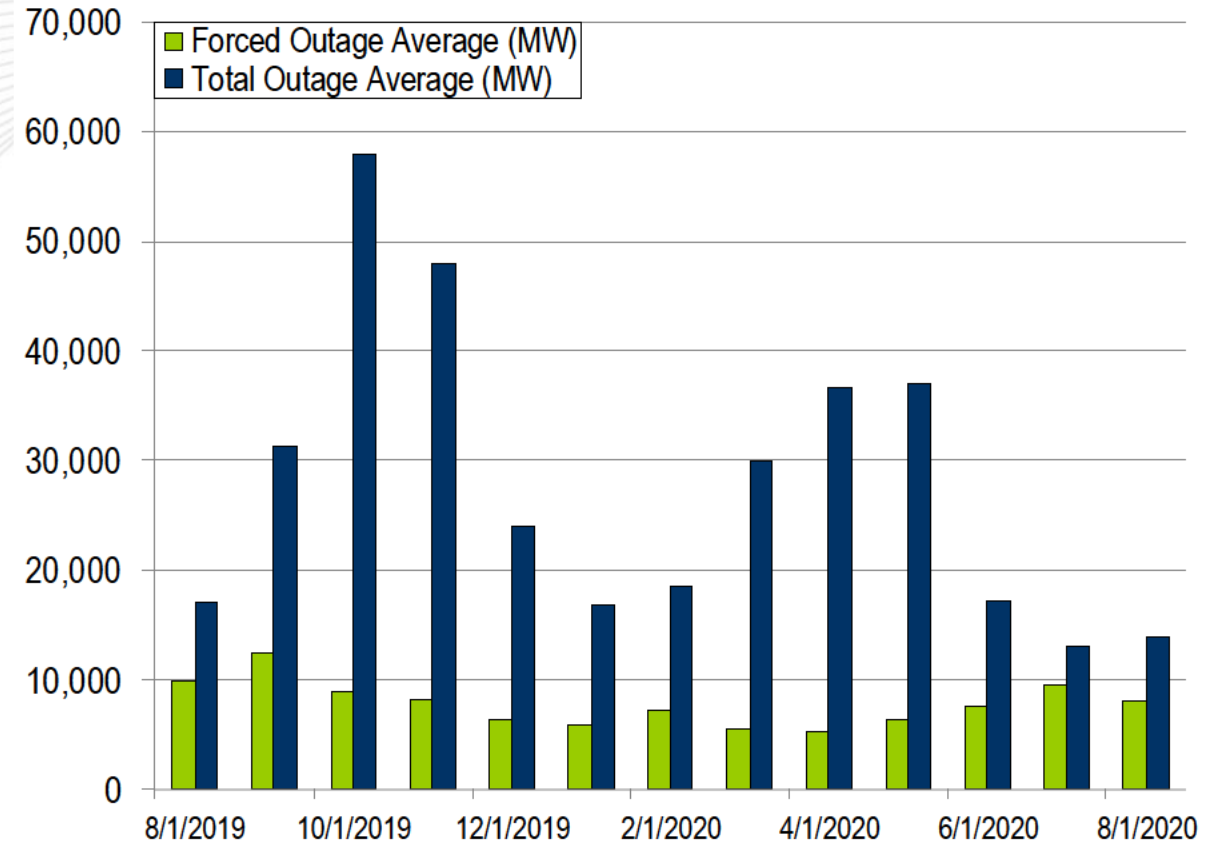
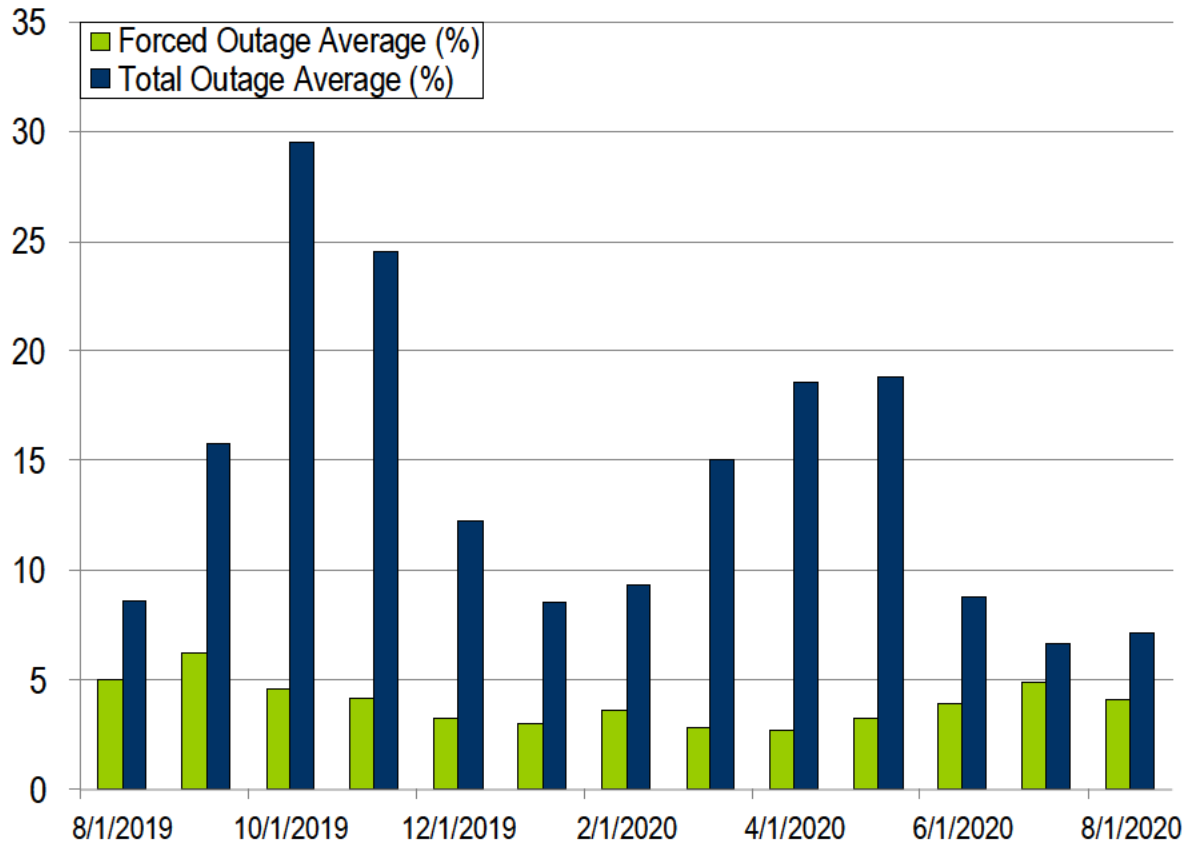
# Daily Peak Forecast Error (August)



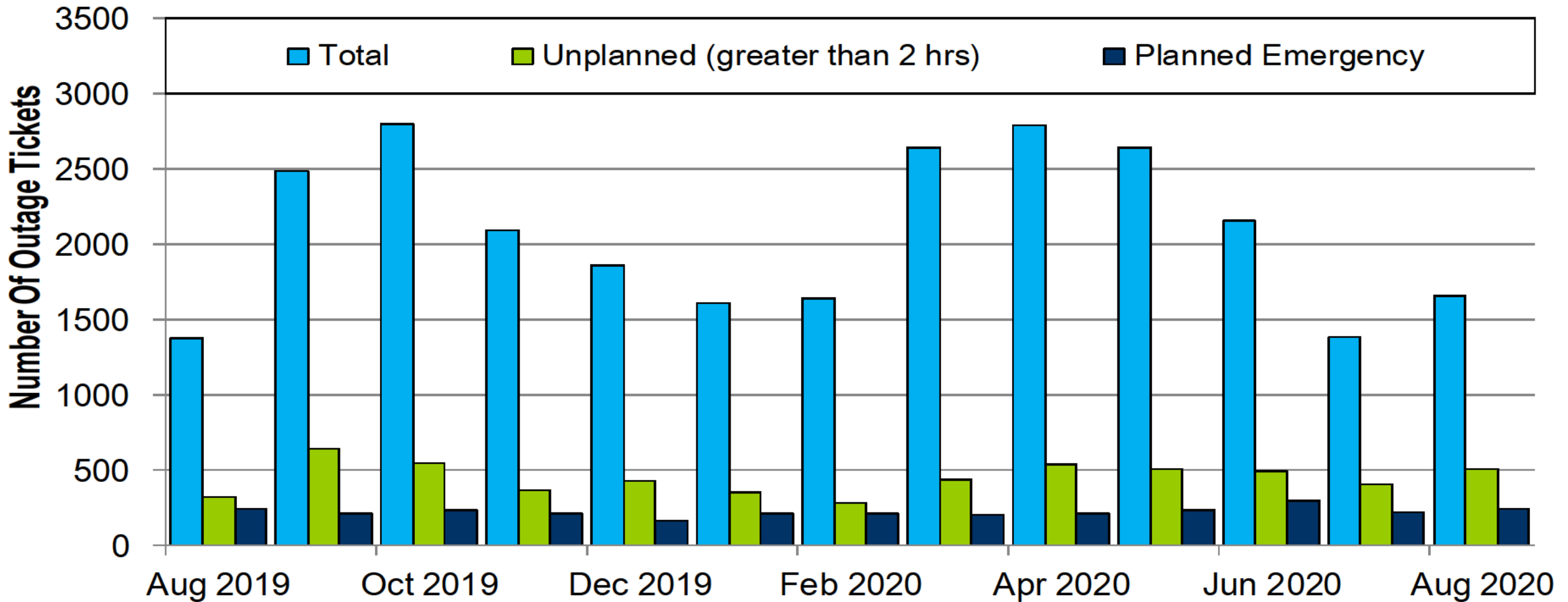


PJM's BAAL performance has exceeded the goal of 99% for each month in 2020.

- Zero spinning events in the month of August
- Five reserve sharing events with the Northeast Power Coordinating Council (NPCC)
- The following Emergency Procedures occurred in August:
  - 24 Post-Contingency Local Load Relief Warnings (PCLLRW)
  - 2 Hot Weather Alerts

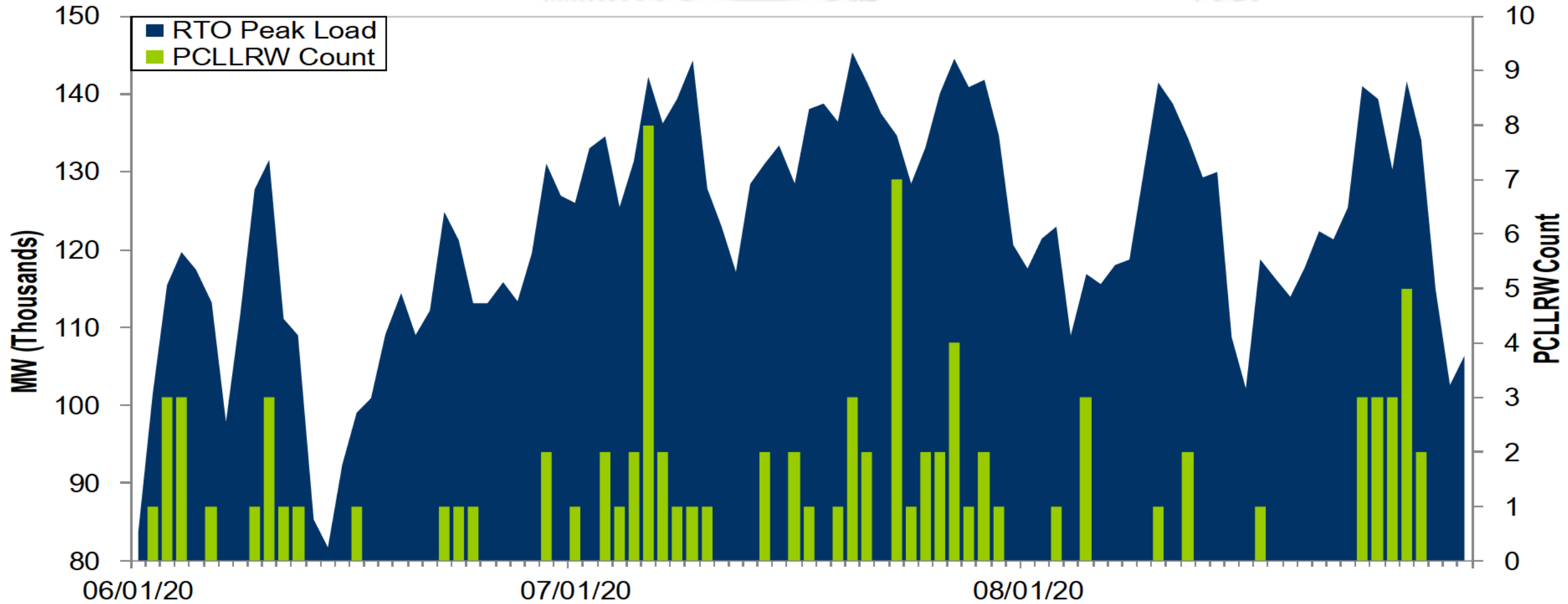


The 13-month average forced outage rate is 3.96% or 7,811 MW.  
 The 13-month average total outage rate is 14.12% or 27,824 MW.



Note: "Unplanned Outages" include tripped facilities. One tripping event may involve multiple facilities.

# PCLLRW Count Vs. Peak Load – Daily Values For 3 Months



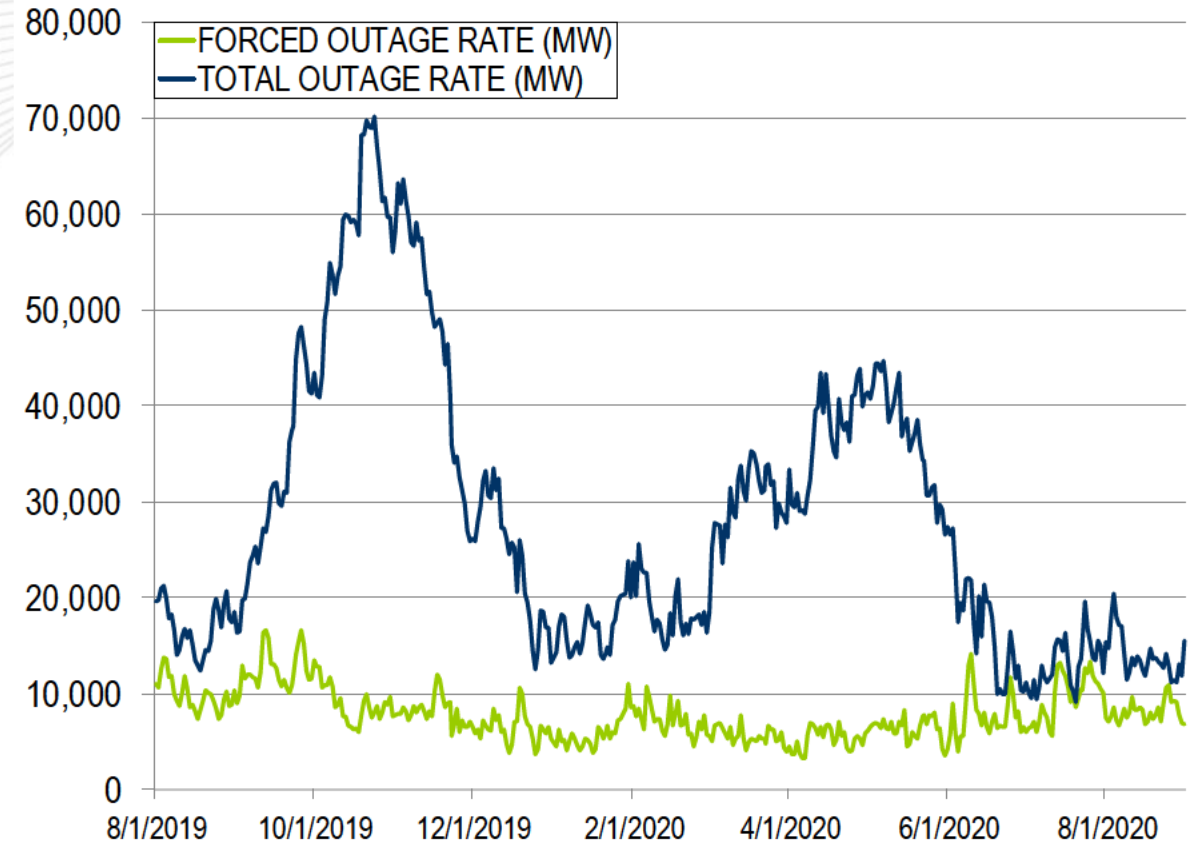
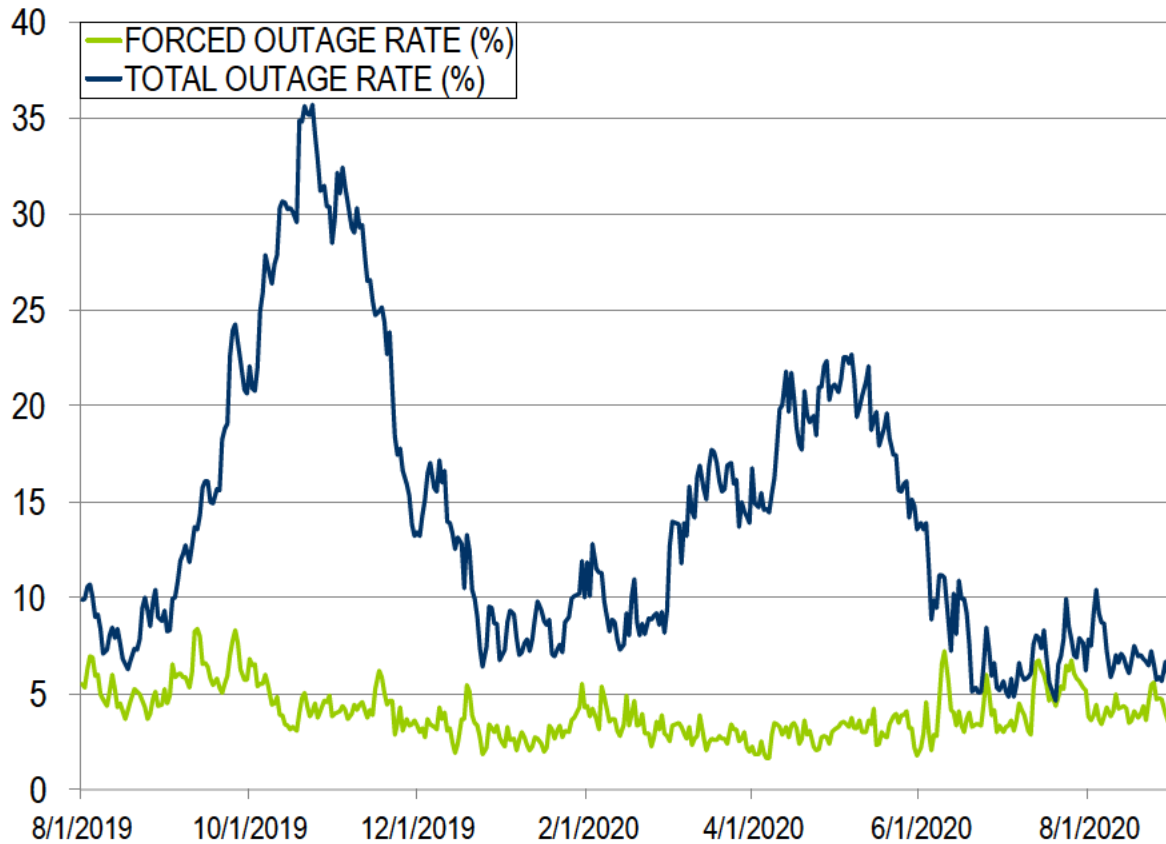


PJM experienced no spinning events during the month of August 2020.

# Appendix

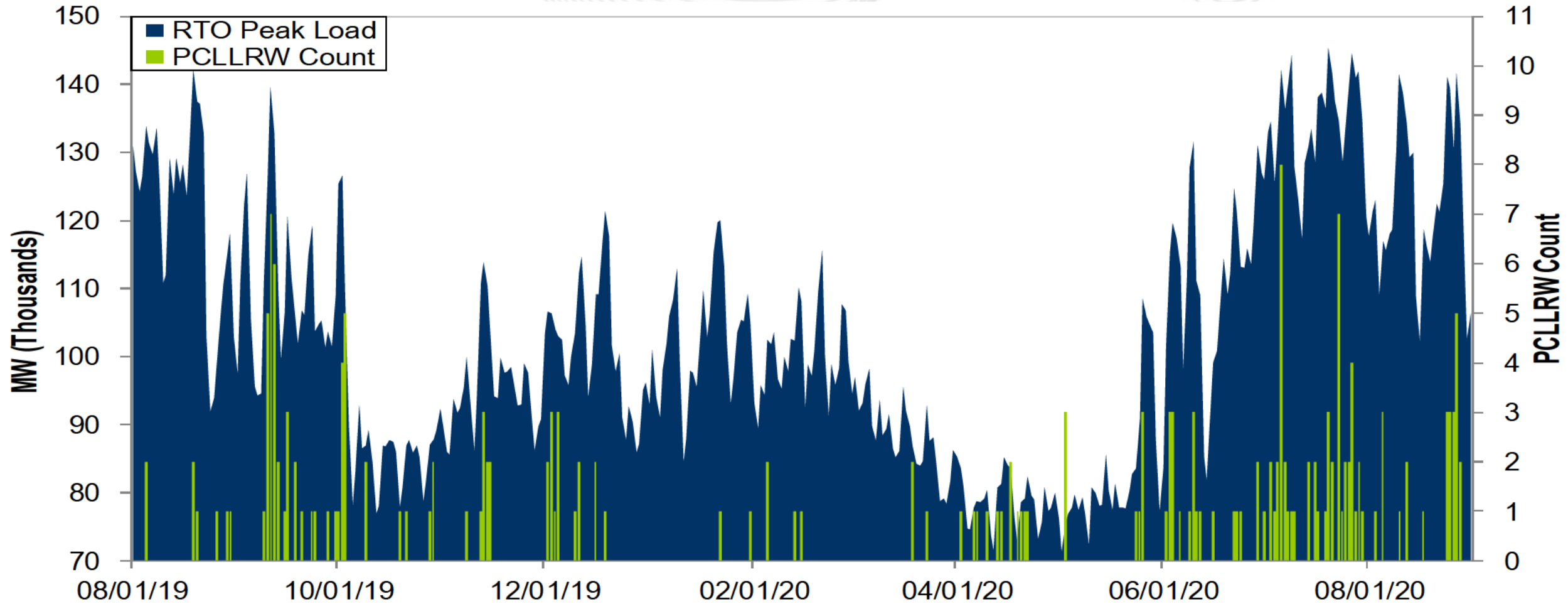
## Goal Measurement: Balancing Authority ACE Limit (BAAL)

- The purpose of the new BAAL standard is to maintain interconnection frequency within a predefined frequency profile under all conditions (normal and abnormal), to prevent frequency-related instability, unplanned tripping of load or generation, or uncontrolled separation or cascading outages that adversely impact the reliability of the interconnection. NERC requires each balancing authority demonstrate real-time monitoring of ACE and interconnection frequency against associated limits and shall balance its resources and demands in real time so that its Reporting ACE does not exceed the BAAL ( $BAAL_{LOW}$  or  $BAAL_{HIGH}$ ) for a continuous time period greater than 30 minutes for each event.
- PJM directly measures the total number of BAAL excursions in minutes compared to the total number of minutes within a month. PJM has set a target value for this performance goal at 99% on a daily and monthly basis. In addition, current NERC rules limit the recovery period to no more than 30 minutes for a single event.



The 13-month average forced outage rate is 3.96% or 7,811 MW.  
 The 13-month average total outage rate is 14.12% or 27,824 MW.

# PCLLRW Count Vs. Peak Load – Daily Values For 13 Months



Facilitator:  
Darlene Phillips,  
[Darlene.Phillips@pjm.com](mailto:Darlene.Phillips@pjm.com)

Secretary:  
Lauren Strella Wahba,  
[Lauren.StrellaWahba@pjm.com](mailto:Lauren.StrellaWahba@pjm.com)

SME/Presenter:  
Stephanie Monzon,  
[Stephanie.Monzon@pjm.com](mailto:Stephanie.Monzon@pjm.com)

## Review of Operating Metrics – August 2020



### Member Hotline

(610) 666 – 8980

(866) 400 – 8980

[custsvc@pjm.com](mailto:custsvc@pjm.com)