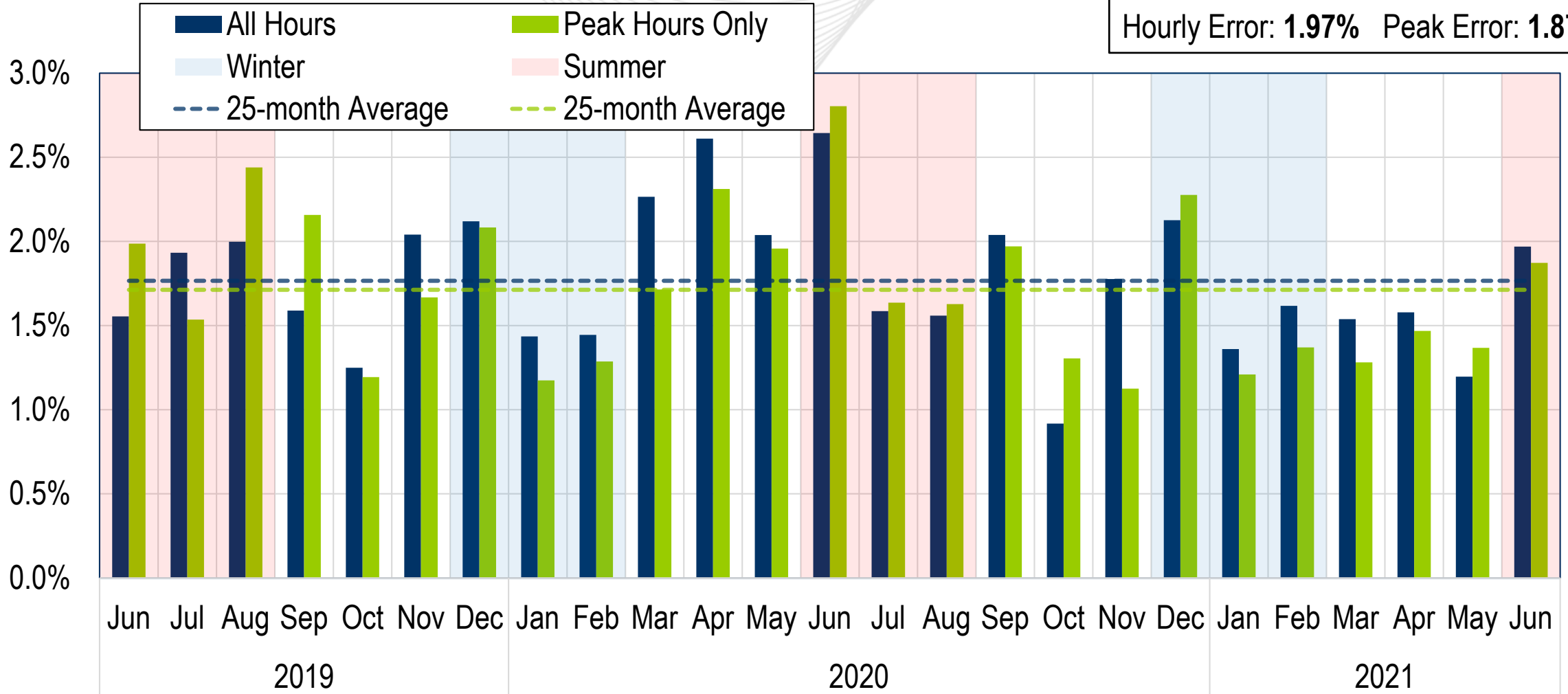




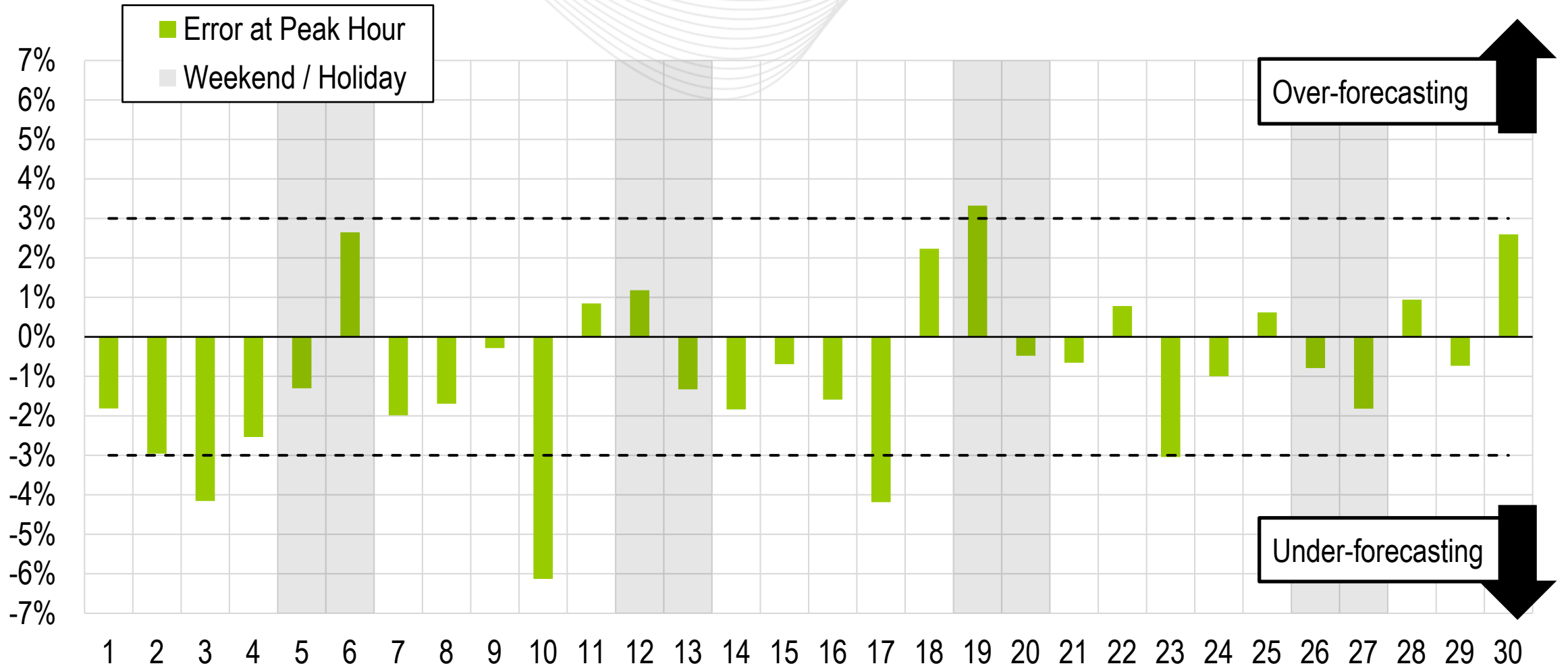
# System Operations Report

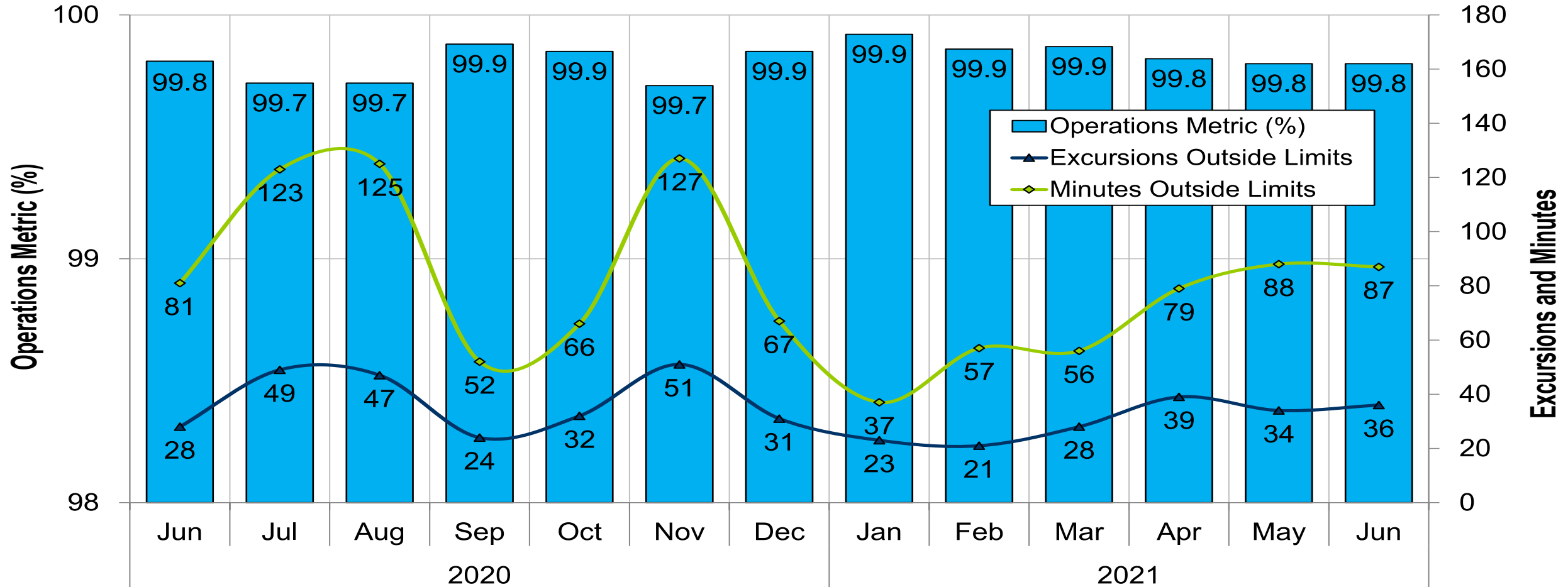
Hong Chen  
Senior Lead Engineer, Markets Coordination  
Operating Committee  
July 15, 2021

June 2021  
 Hourly Error: **1.97%** Peak Error: **1.87%**



# Daily Peak Forecast Error (June)

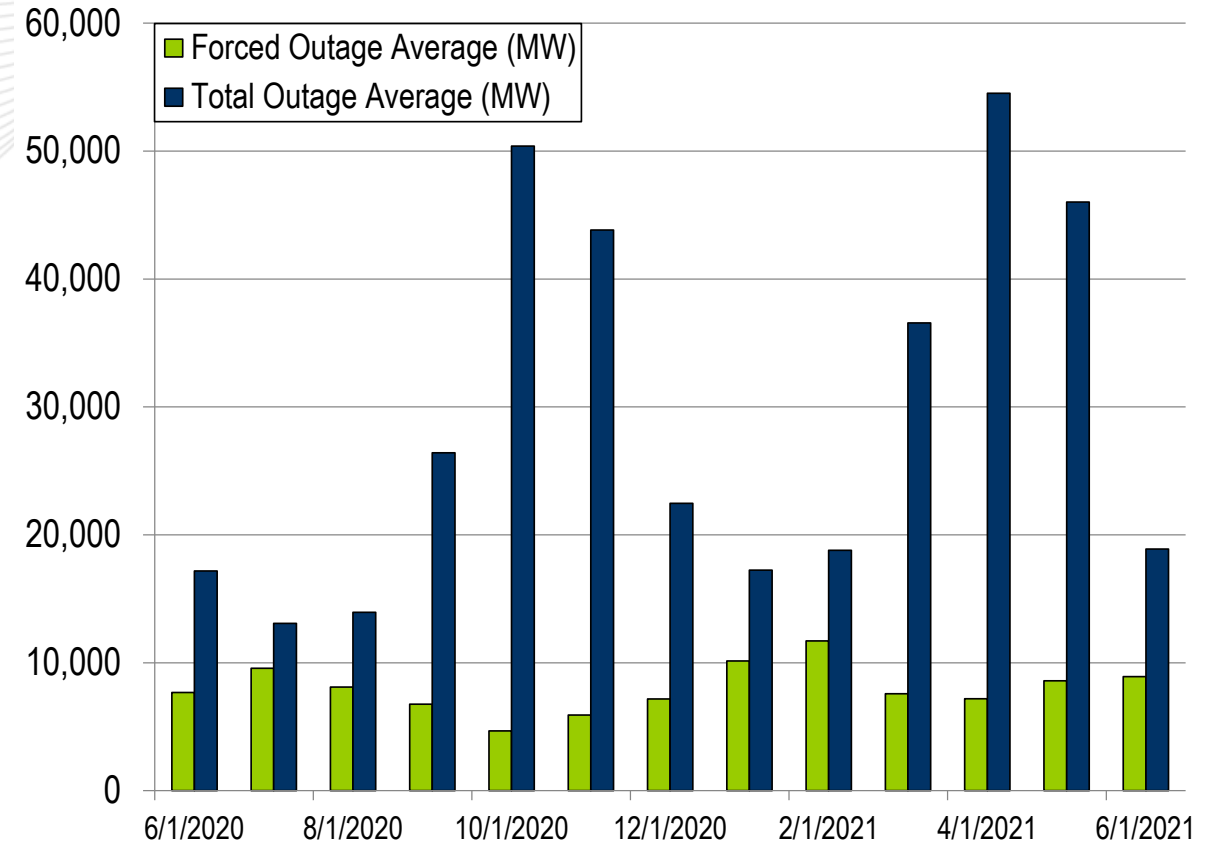
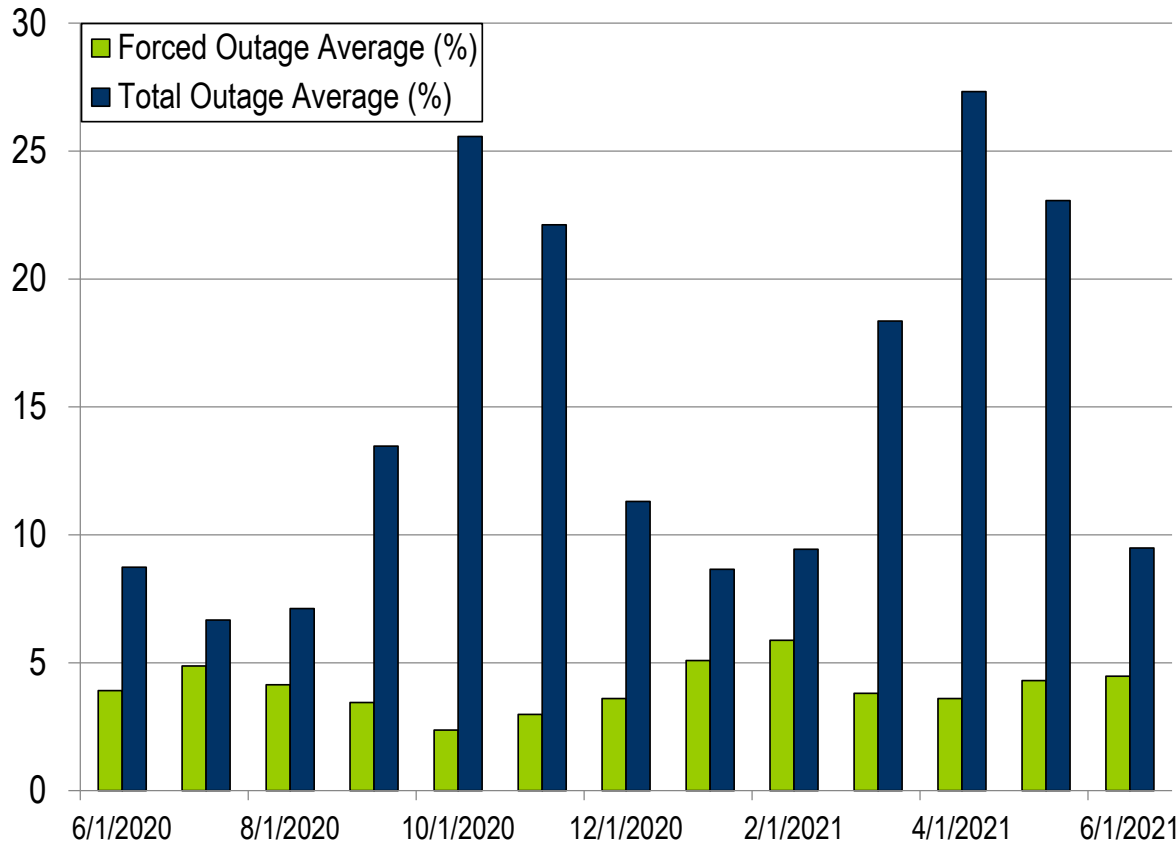




PJM's BAAL performance has exceeded the goal of 99% for each month in 2021.

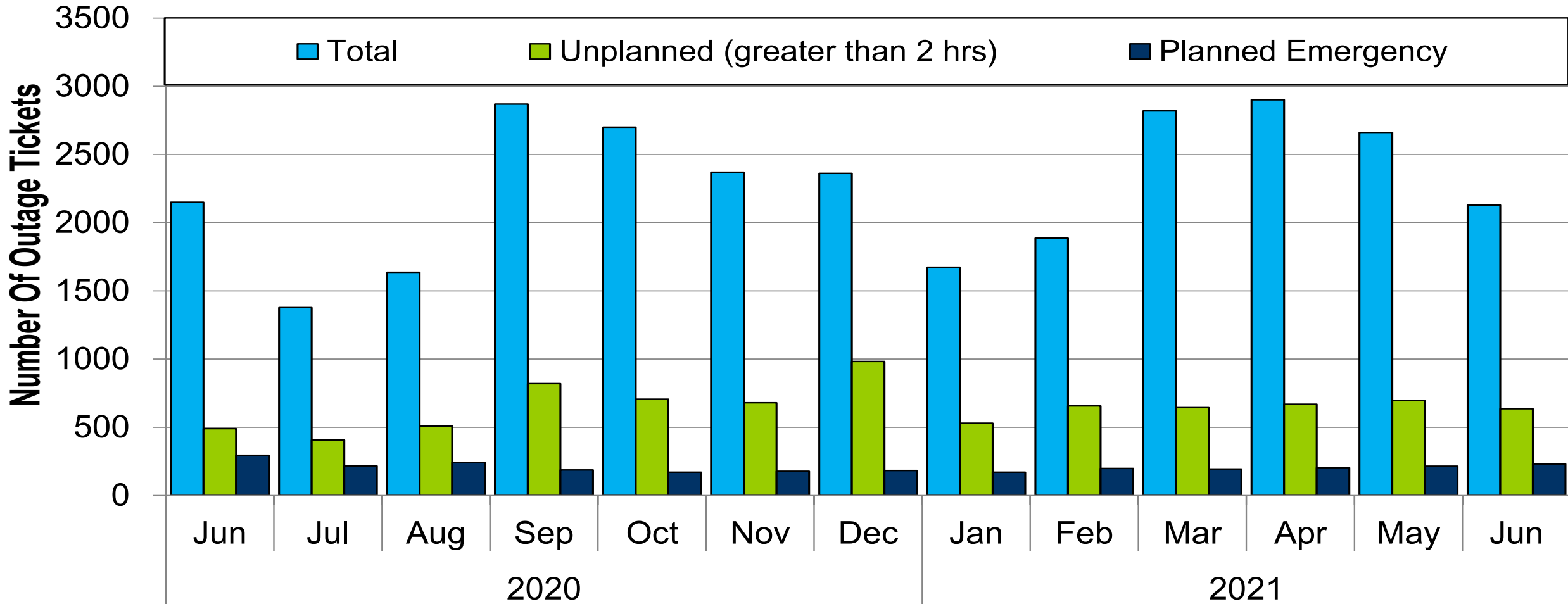
- Two spinning events in the month of June
- Zero reserve sharing events with the Northeast Power Coordinating Council (NPCC)
- The following Emergency Procedures occurred in June:
  - 23 Post-Contingency Local Load Relief Warnings (PCLLRW)
  - 5 Hot Weather Alerts
  - 2 High System Voltages
  - 1 Shortage Case Approved

- 1 Shortage Case Approved
- The approved Shortage Case occurred on:
  - 06/02/21: Effective for 17:00-17:05 pricing interval (1)
    - During the peak load time, a large unit tripped and load became higher.



The 13-month average forced outage rate is 4.03% or 7,978 MW.  
 The 13-month average total outage rate is 14.74% or 29,223 MW.

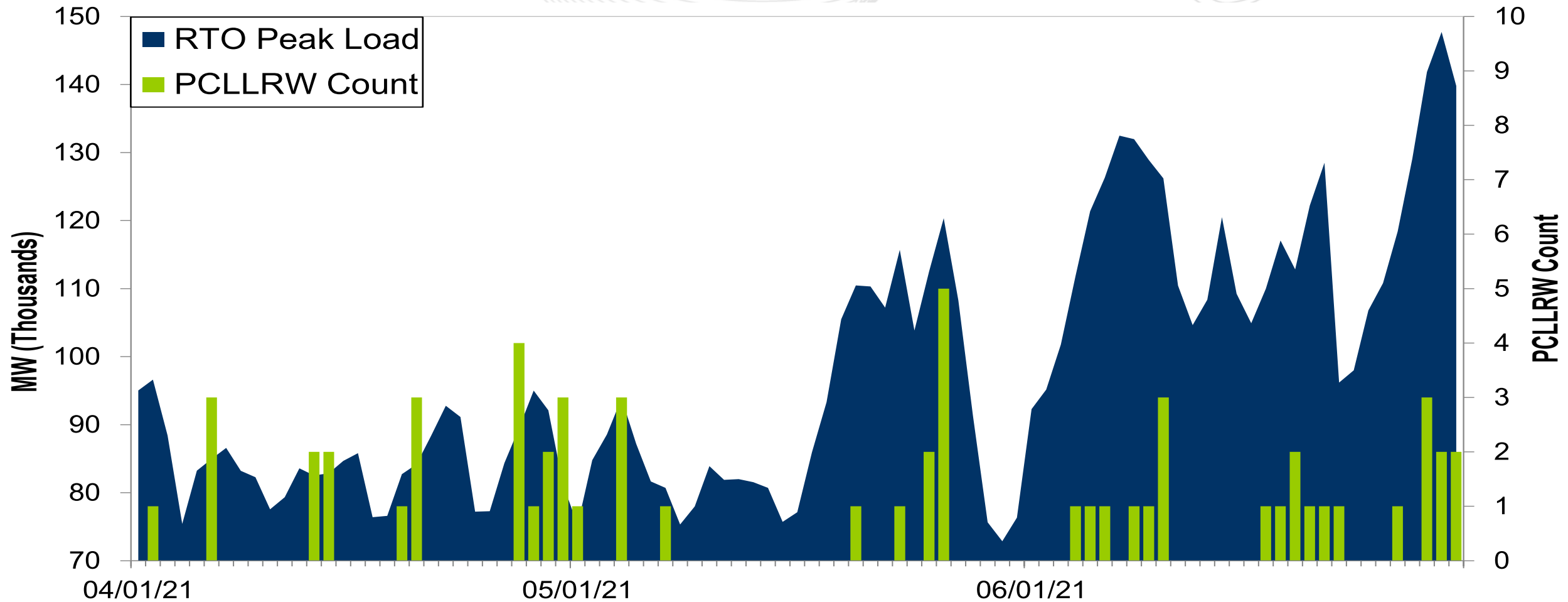
# 2020-2021 Planned Emergency, Unplanned, and Total Outages by Ticket



Note: "Unplanned Outages" include tripped facilities. One tripping event may involve multiple facilities.



# PCLLRW Count Vs. Peak Load – Daily Values For 3 Months



Event	Date	Start Time	End Time	Duration	Region	Tier 1 Estimate (MW)	Tier 1 Response (MW)
1	06/21/21	01:54:26	02:01:23	00:06:57	RTO	2340.8	1764.1
2	06/22/21	23:33:42	23:38:25	00:04:43	RTO	2277.0	1367.8

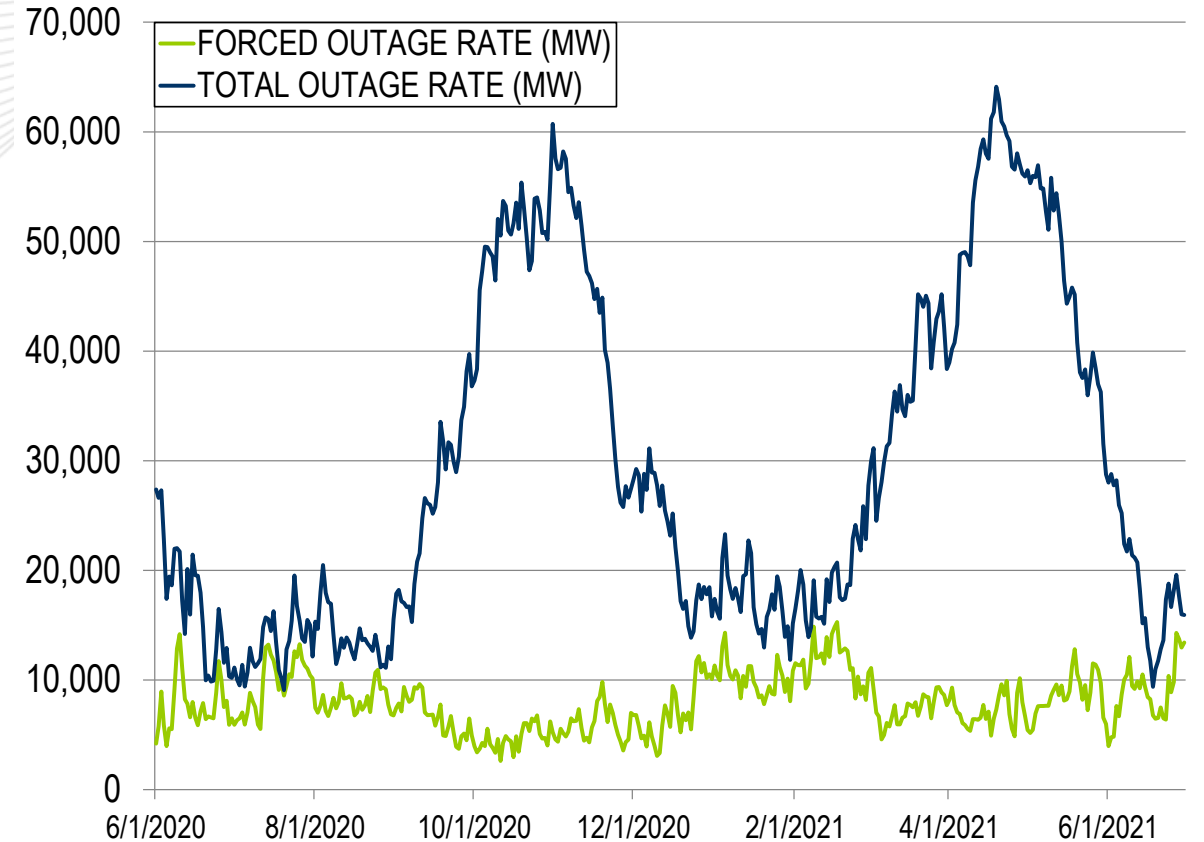
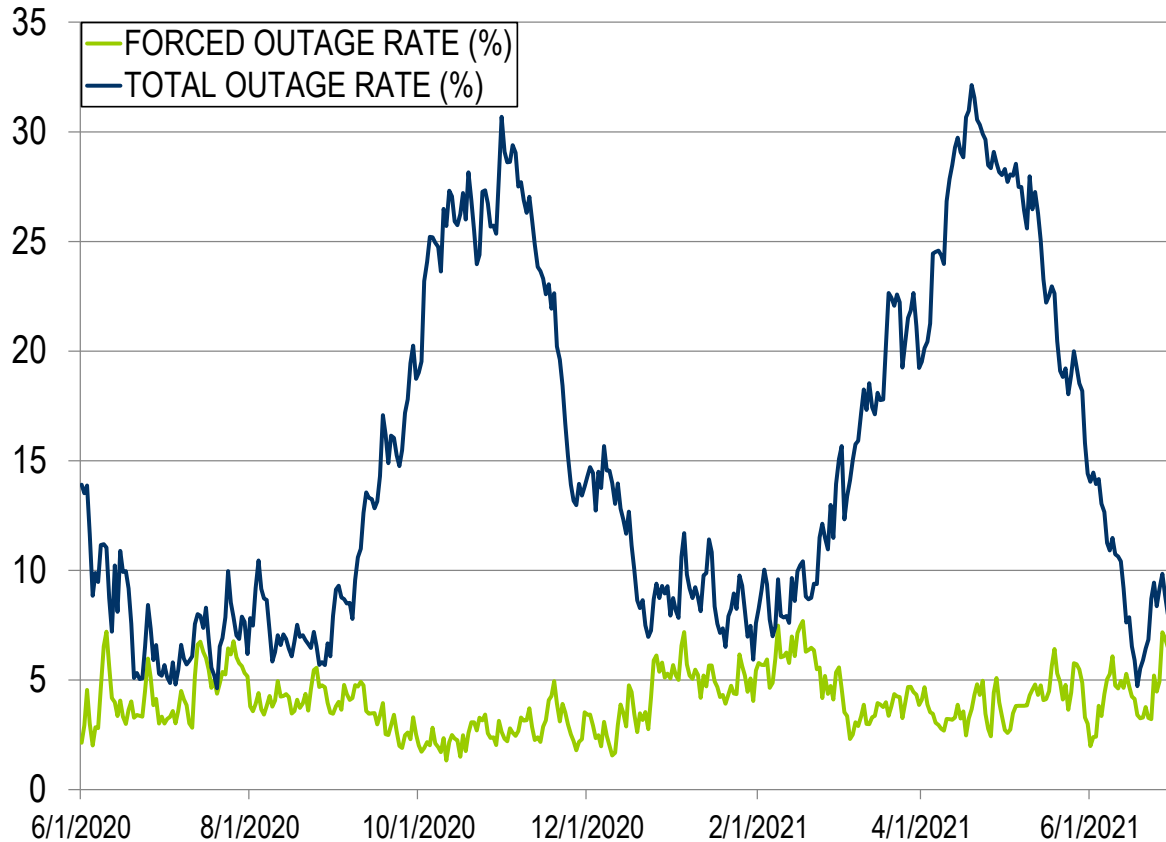
Event	Date	Start Time	End Time	Duration	Region	Tier 2 Assigned (MW)	Tier 2 Response (MW)	Tier 2 Penalty (MW)
1	06/21/21	01:54:26	02:01:23	00:06:57	RTO	30.0	30.0	0.0
2	06/22/21	23:33:42	23:38:25	00:04:43	RTO	0.0	0.0	0.0

\*Tier 2 Response is equal to Tier 2 Assigned for events with duration less than ten minutes

# Appendix

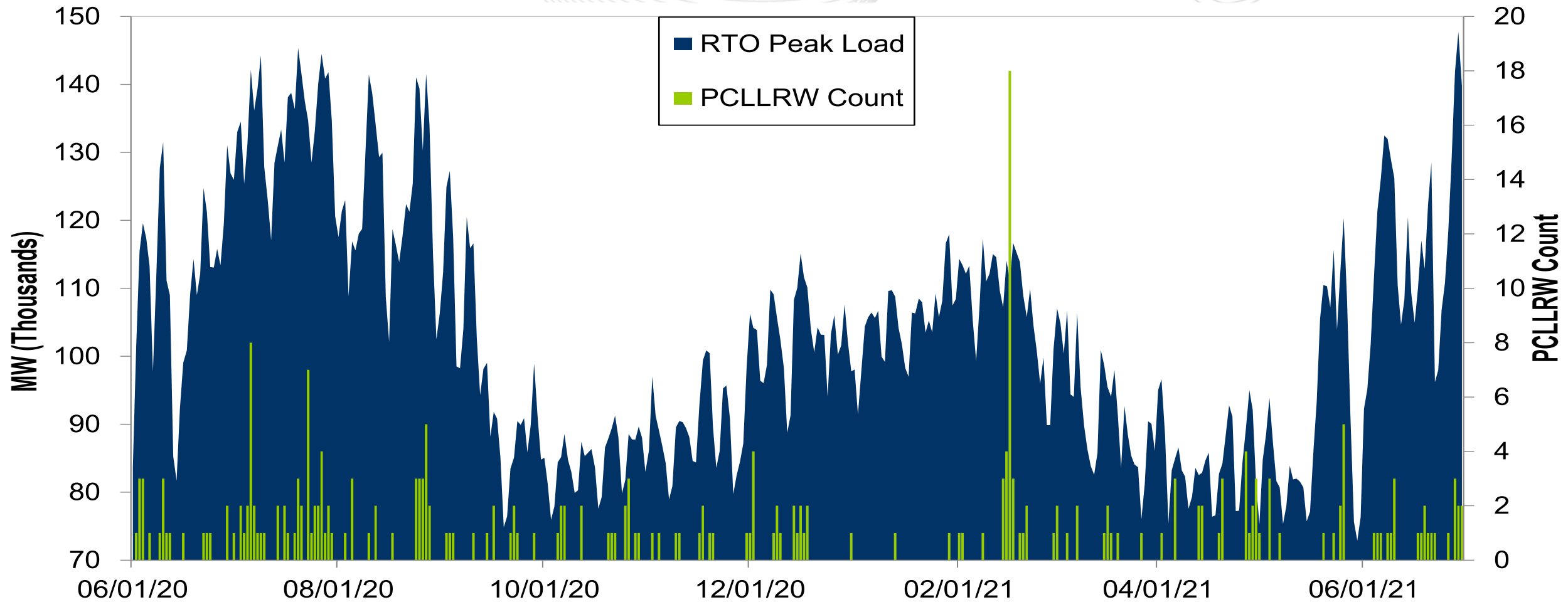
## Goal Measurement: Balancing Authority ACE Limit (BAAL)

- The purpose of the new BAAL standard is to maintain interconnection frequency within a predefined frequency profile under all conditions (normal and abnormal), to prevent frequency-related instability, unplanned tripping of load or generation, or uncontrolled separation or cascading outages that adversely impact the reliability of the interconnection. NERC requires each balancing authority demonstrate real-time monitoring of ACE and interconnection frequency against associated limits and shall balance its resources and demands in real time so that its Reporting ACE does not exceed the BAAL ( $BAAL_{LOW}$  or  $BAAL_{HIGH}$ ) for a continuous time period greater than 30 minutes for each event.
- PJM directly measures the total number of BAAL excursions in minutes compared to the total number of minutes within a month. PJM has set a target value for this performance goal at 99% on a daily and monthly basis. In addition, current NERC rules limit the recovery period to no more than 30 minutes for a single event.



The 13-month average forced outage rate is 4.03% or 7,978 MW.  
 The 13-month average total outage rate is 14.74% or 29,223 MW.

# PCLLRW Count Vs. Peak Load – Daily Values For 13 Months



Presenter:  
Hong Chen,  
[Hong.Chen@pjm.com](mailto:Hong.Chen@pjm.com)

SME:  
David Kimmel,  
[David.Kimmel@pjm.com](mailto:David.Kimmel@pjm.com)

System Operations Report



### Member Hotline

(610) 666 – 8980

(866) 400 – 8980

[custsvc@pjm.com](mailto:custsvc@pjm.com)