

Subregional RTEP Committee – Mid-Atlantic FirstEnergy Supplemental Projects

June 16, 2020

Needs

Stakeholders must submit any comments within 10 days of this meeting in order to provide time necessary to consider these comments prior to the next phase of the M-3 process

Need Number: JCPL-2020-002

Process Stage: Need Meeting – 6/16/2020

Project Driver:
Customer Service

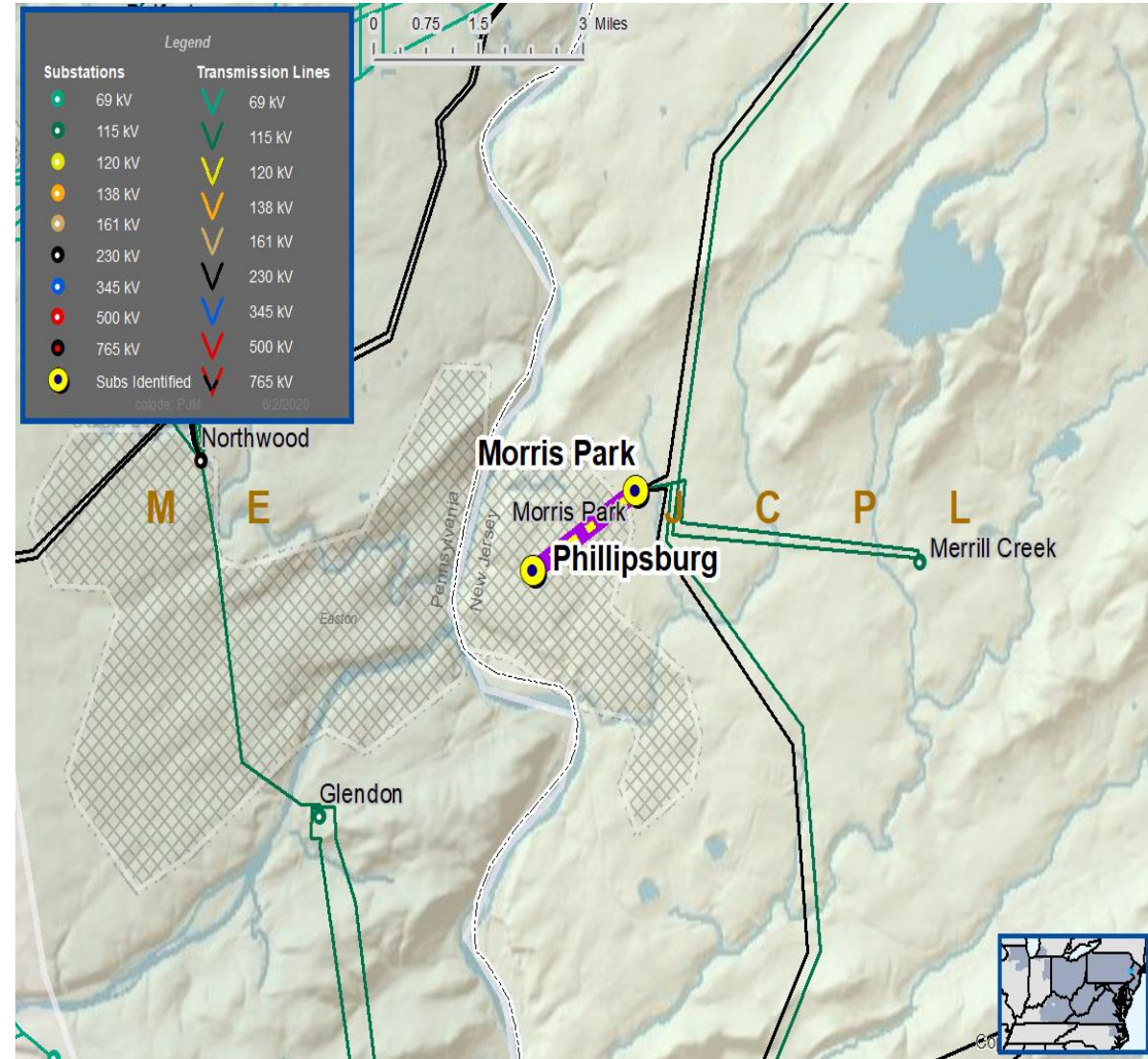
Specific Assumption Reference:

New customer connection request will be evaluated per FirstEnergy’s “Requirements for Transmission Connected Facilities” document and “Transmission Planning Criteria” document.

Problem Statement:

New Customer Connection – A customer requested 34.5 kV service, anticipated load is 7 MW, location is near the Morris Park – Phillipsburg 34.5 kV line.

Requested in-service date is July 2020.



Need Number: JCPL-2020-003

Process Stage: Need Meeting – 6/16/2020

Project Driver:
Customer Service

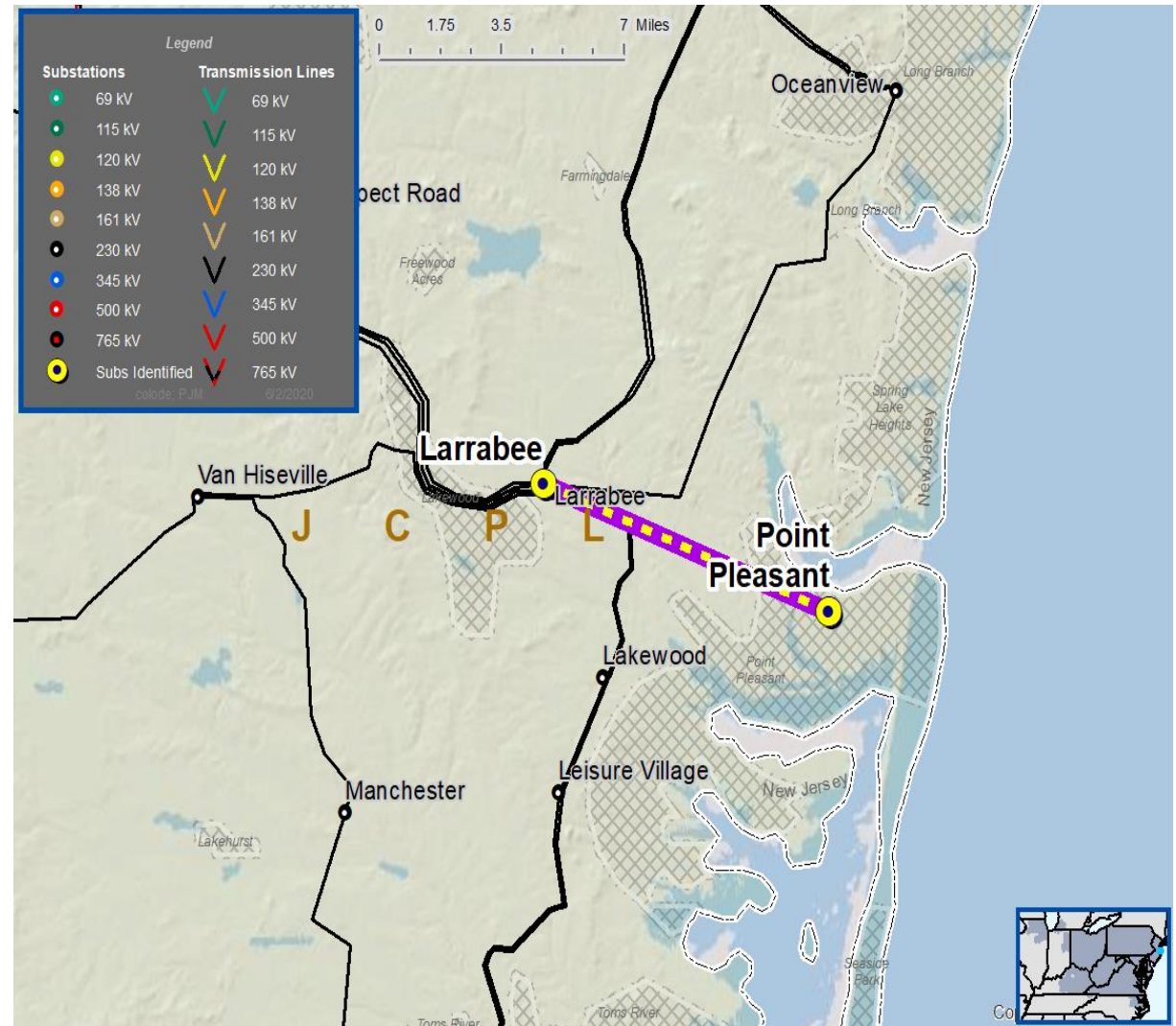
Specific Assumption Reference:

New customer connection request will be evaluated per FirstEnergy’s “Requirements for Transmission Connected Facilities” document and “Transmission Planning Criteria” document.

Problem Statement:

New Customer Connection – A customer requested 34.5 kV service, anticipated load is 4 MW, location is near the Larrabee – Point Pleasant 34.5 kV line.

Requested in-service date is September 2020.



Questions?



Appendix

High level M-3 Meeting Schedule

| Assumptions | Activity | Timing |
|--|---|---|
| | Posting of TO Assumptions Meeting information | 20 days before Assumptions Meeting |
| | Stakeholder comments | 10 days after Assumptions Meeting |
| Needs | Activity | Timing |
| | TOs and Stakeholders Post Needs Meeting slides | 10 days before Needs Meeting |
| | Stakeholder comments | 10 days after Needs Meeting |
| Solutions | Activity | Timing |
| | TOs and Stakeholders Post Solutions Meeting slides | 10 days before Solutions Meeting |
| | Stakeholder comments | 10 days after Solutions Meeting |
| Submission of Supplemental Projects & Local Plan | Activity | Timing |
| | Do No Harm (DNH) analysis for selected solution | Prior to posting selected solution |
| | Post selected solution(s) | Following completion of DNH analysis |
| | Stakeholder comments | 10 days prior to Local Plan Submission for integration into RTEP |
| | Local Plan submitted to PJM for integration into RTEP | Following review and consideration of comments received after posting of selected solutions |

Revision History

6/5/2020 – V1 – Original version posted to pjm.com

6/8/2020 – V2 – removed slide #5, will be presented at TEAC