

Subregional RTEP Committee – Mid-Atlantic PPL Supplemental Projects

November 18, 2020

Need

Stakeholders must submit any comments within 10 days of this meeting in order to provide time necessary to consider these comments prior to the next phase of the M-3 process

Need Number: PPL-2020-0016

Meeting Date: 11/18/2020

Process Stage: Need

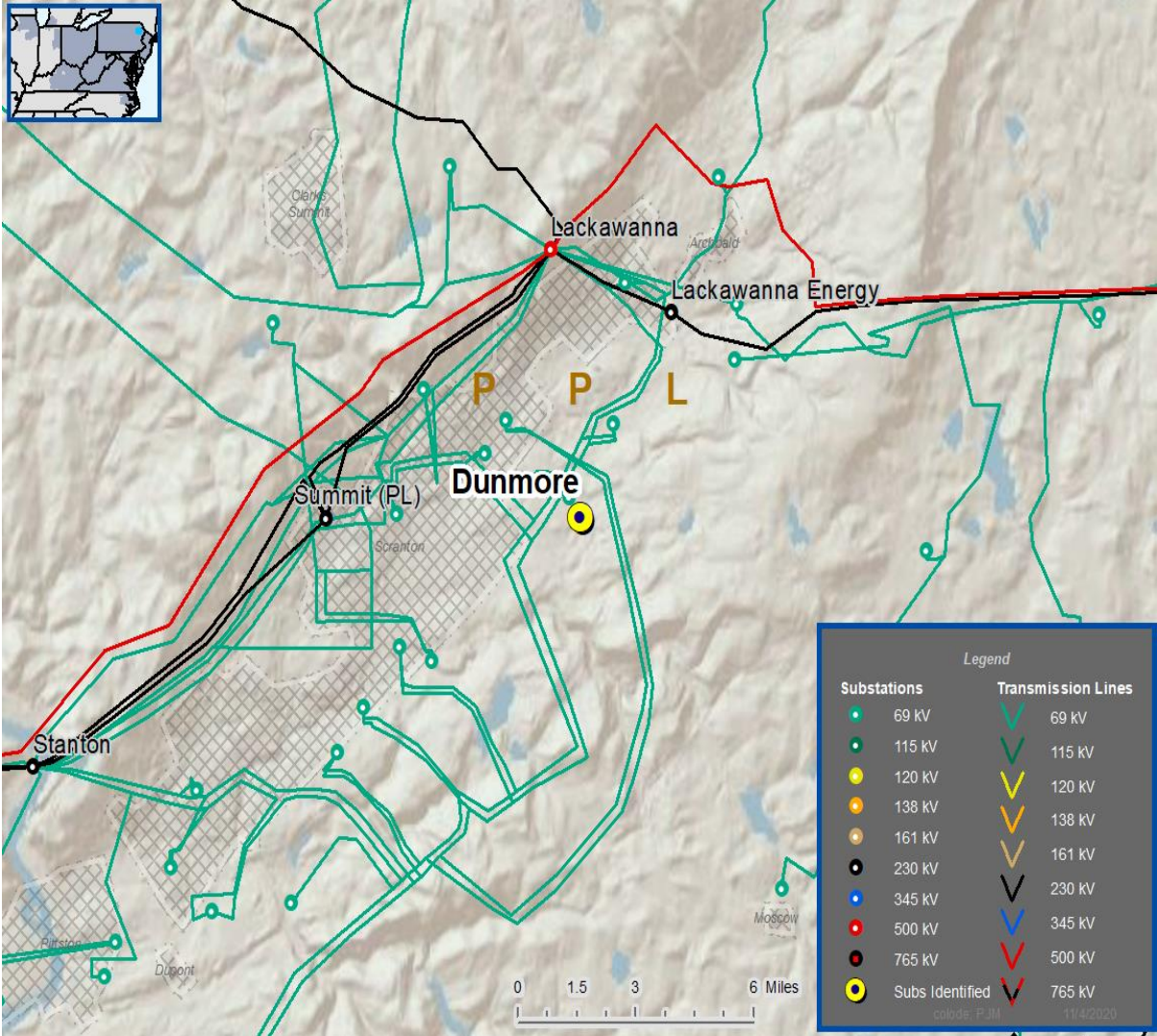
Supplemental Project Driver: Customer Service

Problem Statement:

- A new customer has submitted a request to have their facility served from a 69kV transmission line in Dunmore, PA. The load is approximately 15 MVA.

Specific Assumption References:

[PPL 2020 Annual Assumptions](#)



Need Number: PPL-2020-0017

Meeting Date: 11/18/2020

Process Stage: Need

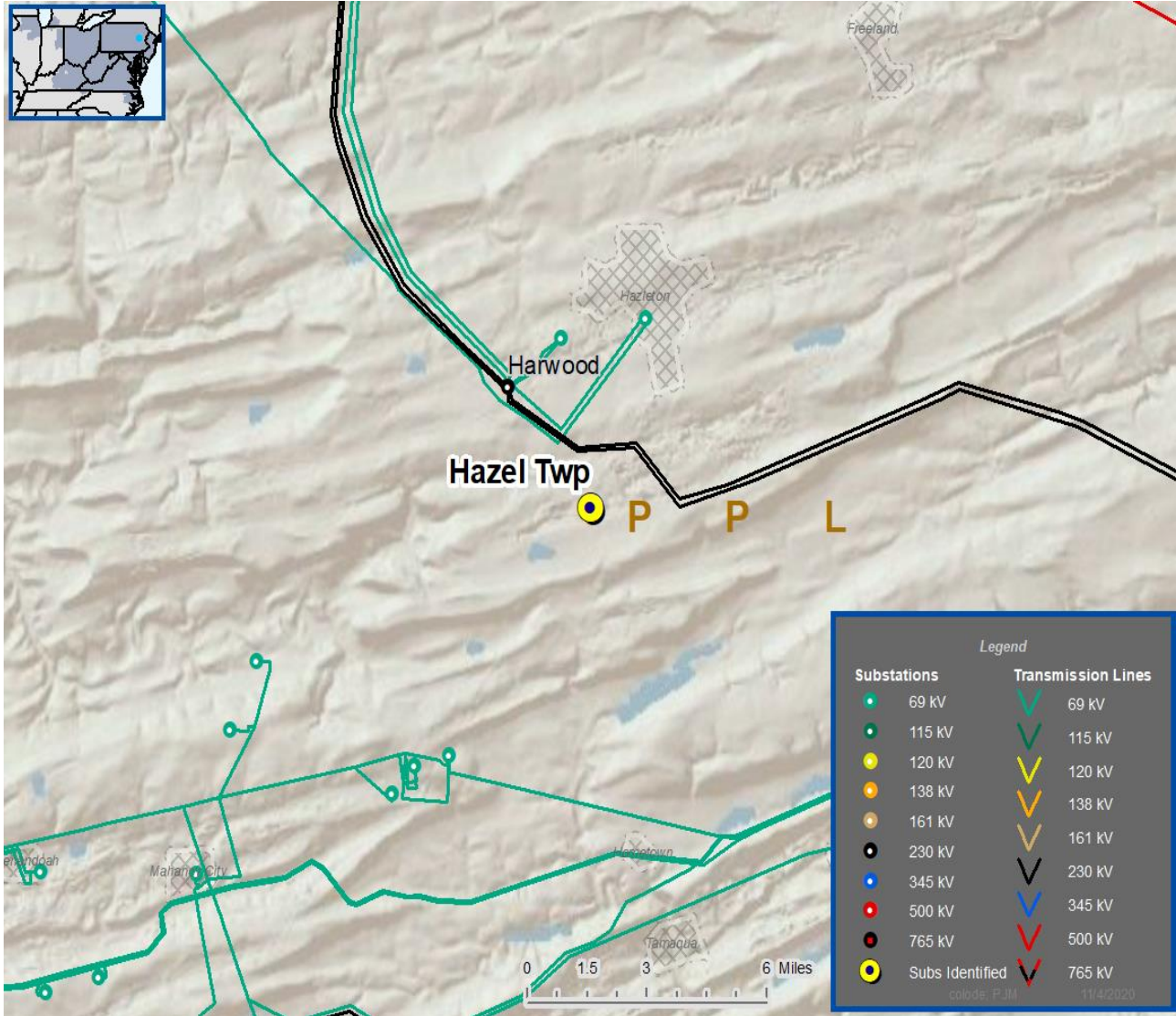
Supplemental Project Driver: Customer Service

Problem Statement:

- A new customer has submitted a request to have their facility served from a 69kV transmission line in Hazle Township, PA. The load is approximately 12 MVA.

Specific Assumption References:

[PPL 2020 Annual Assumptions](#)



Need Number: PPL-2020-0018

Meeting Date: 11/18/2020

Process Stage: Need

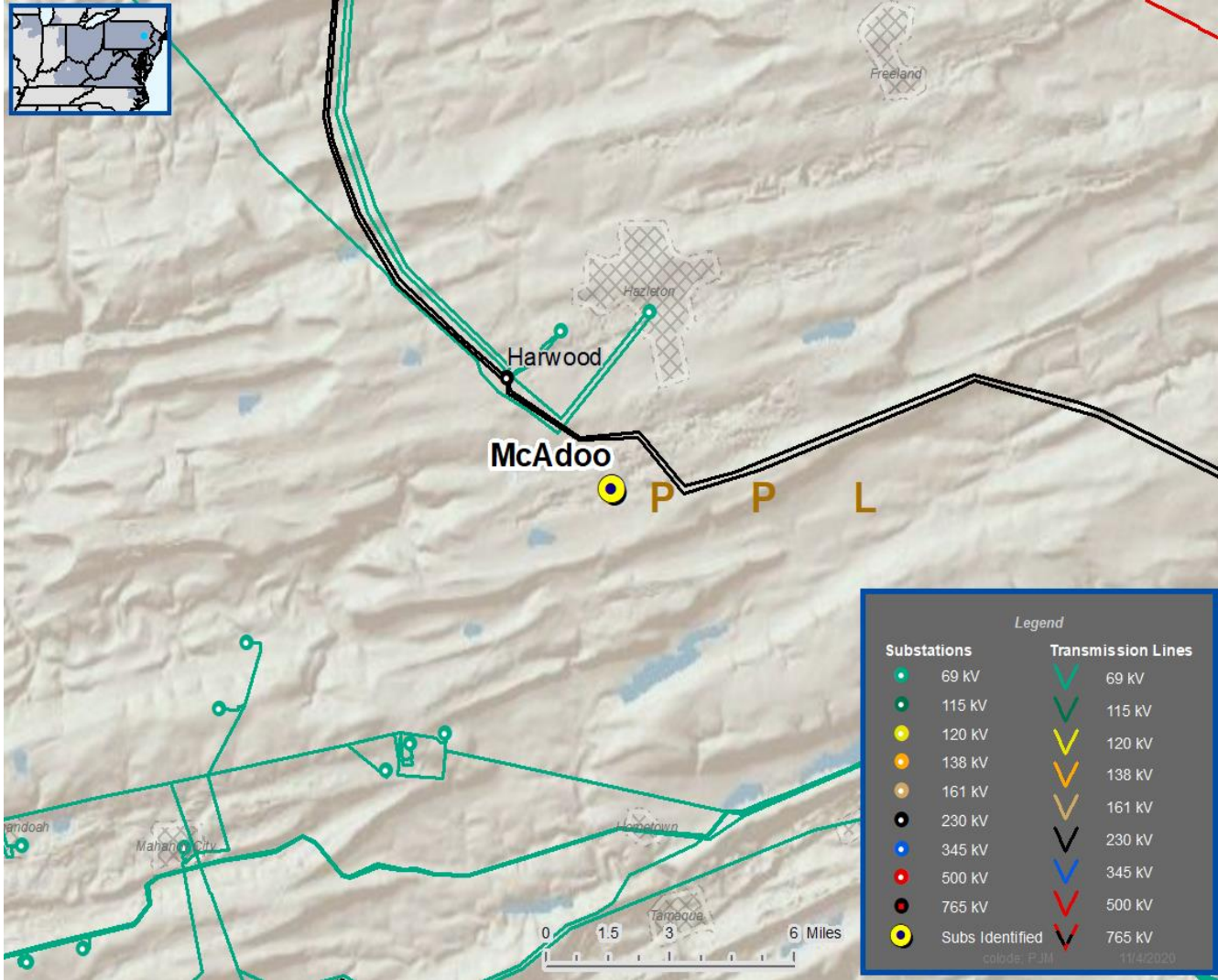
**Supplemental Project Driver:
Customer Service**

Problem Statement:

- A new customer has submitted a request to have their facility served from a 69kV transmission line in McAdoo, PA. The load is approximately 14 MVA.

Specific Assumption References:

[PPL 2020 Annual Assumptions](#)



Questions?



Appendix

High level M-3 Meeting Schedule

Assumptions	Activity	Timing
	Posting of TO Assumptions Meeting information	20 days before Assumptions Meeting
	Stakeholder comments	10 days after Assumptions Meeting
Needs	Activity	Timing
	TOs and Stakeholders Post Needs Meeting slides	10 days before Needs Meeting
	Stakeholder comments	10 days after Needs Meeting
Solutions	Activity	Timing
	TOs and Stakeholders Post Solutions Meeting slides	10 days before Solutions Meeting
	Stakeholder comments	10 days after Solutions Meeting
Submission of Supplemental Projects & Local Plan	Activity	Timing
	Do No Harm (DNH) analysis for selected solution	Prior to posting selected solution
	Post selected solution(s)	Following completion of DNH analysis
	Stakeholder comments	10 days prior to Local Plan Submission for integration into RTEP
	Local Plan submitted to PJM for integration into RTEP	Following review and consideration of comments received after posting of selected solutions

Revision History

11/6/2020 – V1 – Original version posted to pjm.com