

Subregional RTEP Committee – Mid-Atlantic PPL Supplemental Projects

March 17, 2022

Needs

Stakeholders must submit any comments within 10 days of this meeting in order to provide time necessary to consider these comments prior to the next phase of the M-3 process

PPL Transmission Zone: Supplemental

Need Number: PPL-2022-0001

Meeting Date: 03/17/2022

Process Stage: Need

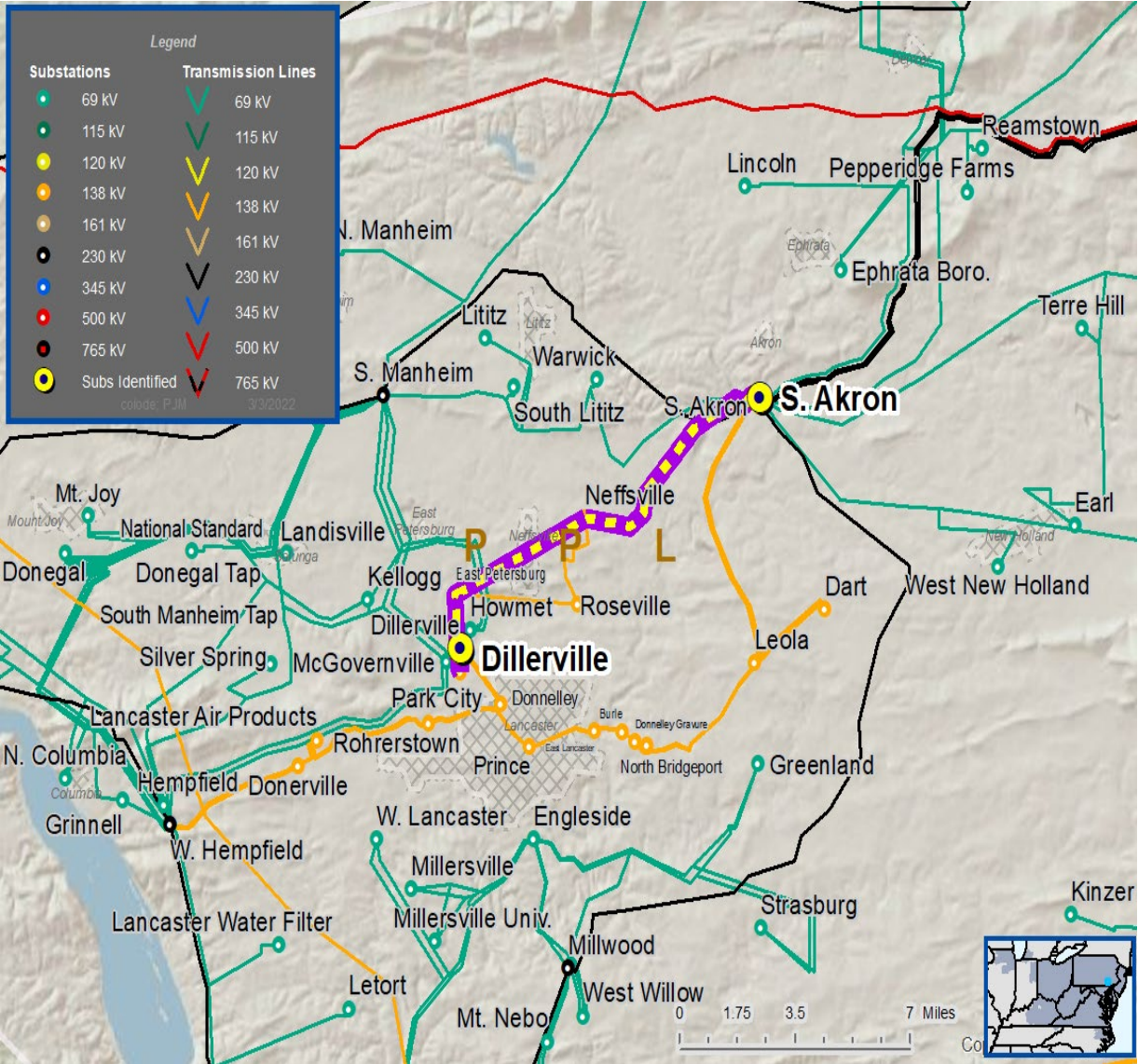
Supplemental Project Driver: Equipment Material Condition, Performance and Risk;

Problem Statement:

The South Akron-Dillerville 1&2 138kV lines are a reliability risk due to frequent operations and poor asset health. The lines have experienced a combined 17 operations since 2014. The lines are in poor condition with the majority of the original assets installed in 1948. This is a 12.5 mile line, installed with 556.5 kcmil ACSR conductor and a mix of steel monopoles and lattice towers.

Specific Assumption References:

[PPL 2022 Annual Assumptions](#)



PPL Transmission Zone: Supplemental

Need Number: PPL-2022-0002

Meeting Date: 03/17/2022

Process Stage: Need

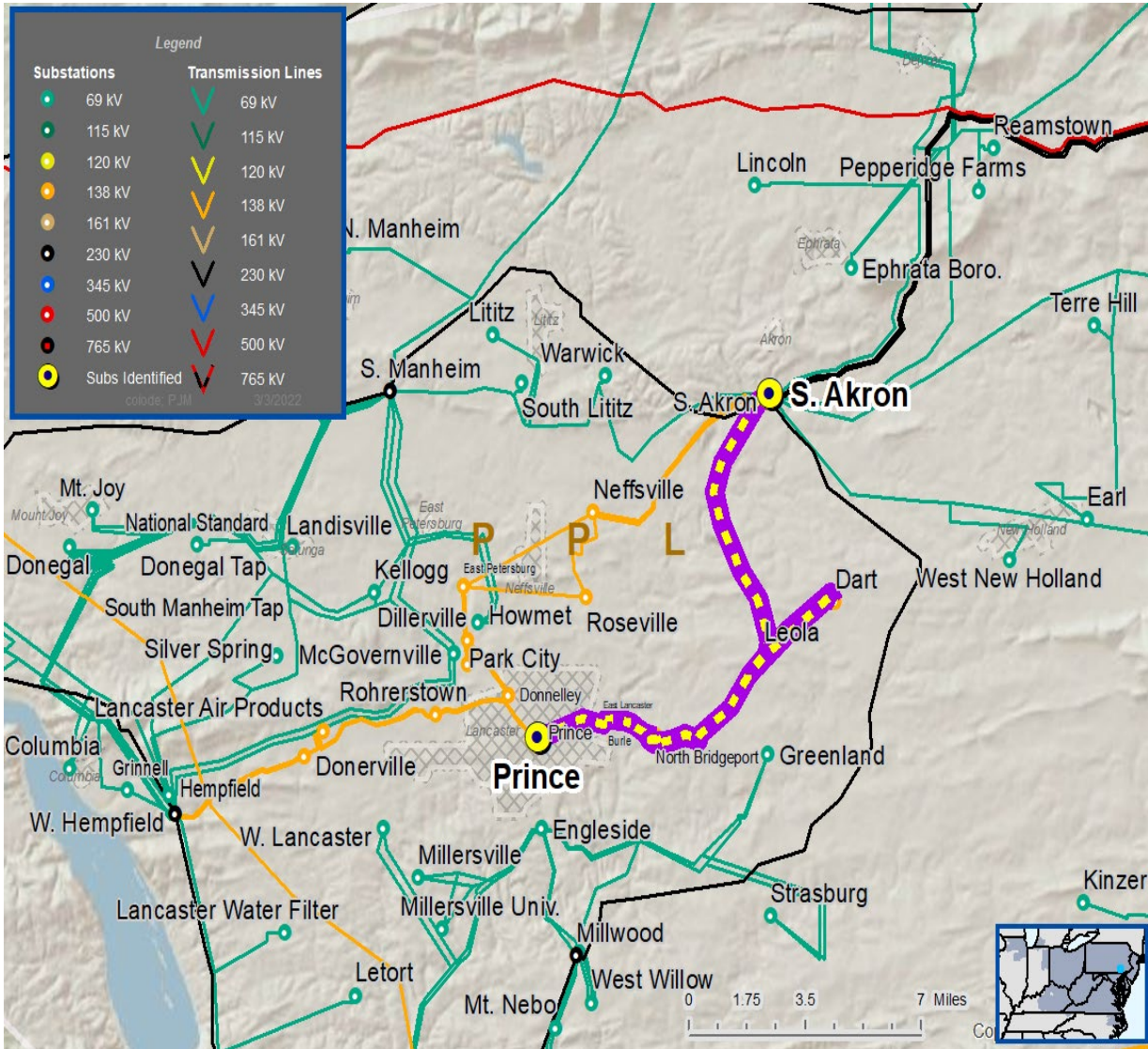
Supplemental Project Driver: Equipment Material Condition, Performance and Risk;

Problem Statement:

The South Akron-Prince 1&2 138kV lines are a reliability risk due to frequent operations and poor asset health. The lines have experienced a combined 16 operations since 2014. The lines are in poor condition with the majority of the original assets installed in 1950. This is an 11-mile line, installed with 556.5 and 795 kcmil ACSR and a mix of steel monopoles and lattice towers.

Specific Assumption References:

[PPL 2022 Annual Assumptions](#)



PPL Transmission Zone: Supplemental

Need Number: PPL-2022-0003

Meeting Date: 03/17/2022

Process Stage: Need

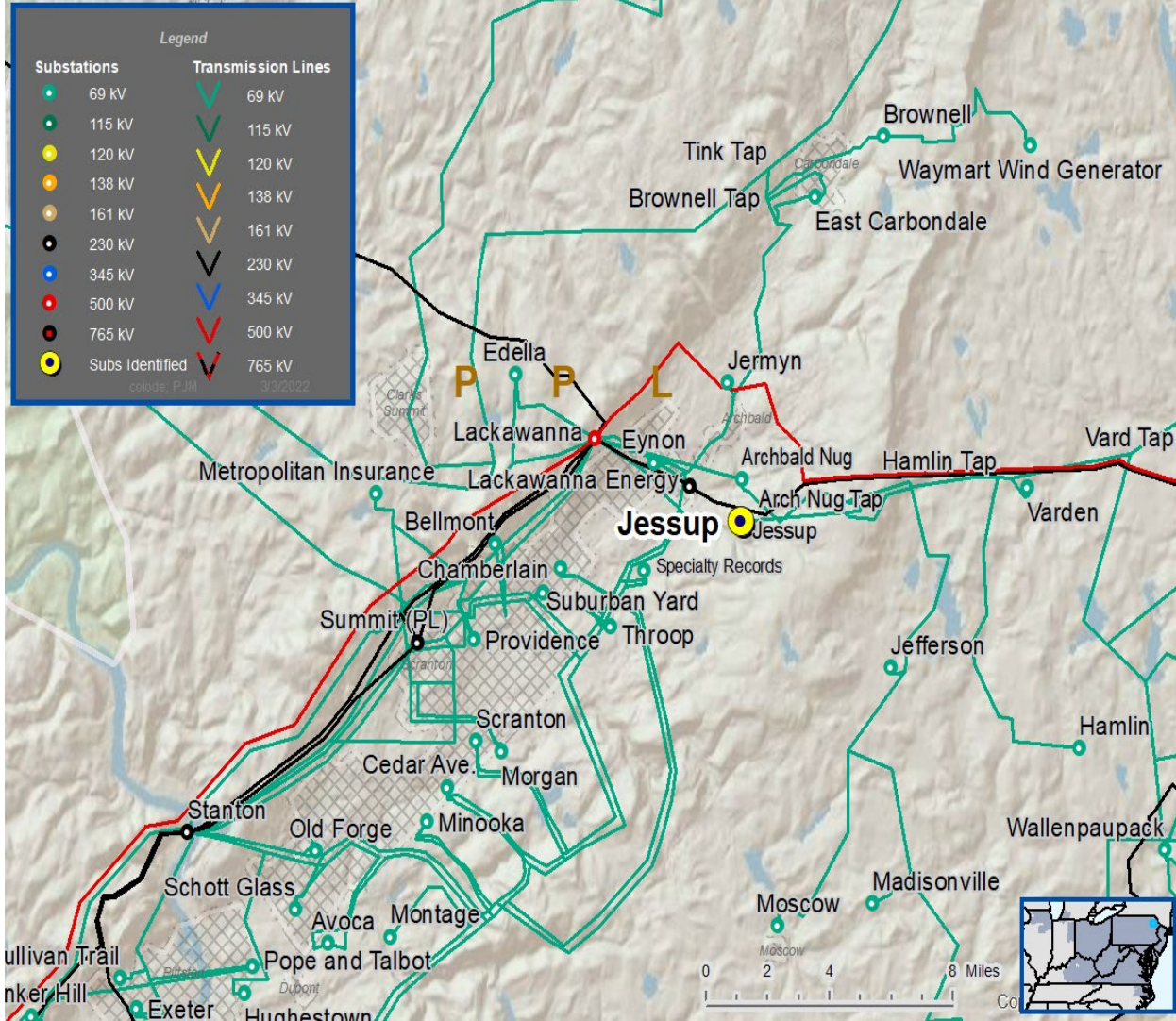
Supplemental Project Driver: Customer Service

Problem Statement:

PPL Distribution has submitted a request for a 69kV tap at Jessup Substation to feed a second 69-12kV transformer. There are several customers adding a combined load of 6 MW to Jessup substation.

Specific Assumption References:

[PPL 2022 Annual Assumptions](#)



Questions?



Appendix

High level M-3 Meeting Schedule

Assumptions	Activity	Timing
	Posting of TO Assumptions Meeting information	20 days before Assumptions Meeting
	Stakeholder comments	10 days after Assumptions Meeting
Needs	Activity	Timing
	TOs and Stakeholders Post Needs Meeting slides	10 days before Needs Meeting
	Stakeholder comments	10 days after Needs Meeting
Solutions	Activity	Timing
	TOs and Stakeholders Post Solutions Meeting slides	10 days before Solutions Meeting
	Stakeholder comments	10 days after Solutions Meeting
Submission of Supplemental Projects & Local Plan	Activity	Timing
	Do No Harm (DNH) analysis for selected solution	Prior to posting selected solution
	Post selected solution(s)	Following completion of DNH analysis
	Stakeholder comments	10 days prior to Local Plan Submission for integration into RTEP
	Local Plan submitted to PJM for integration into RTEP	Following review and consideration of comments received after posting of selected solutions

Revision History

3/7/2021 – V1 – Original version posted to pjm.com