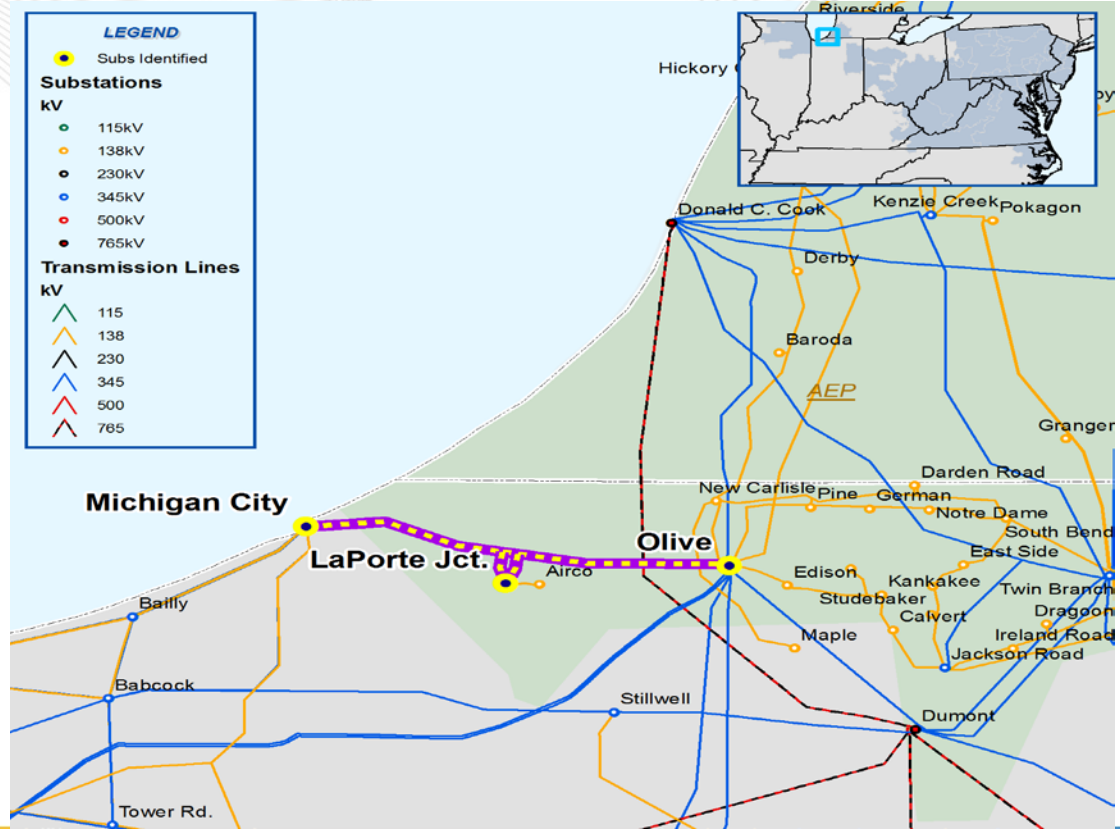




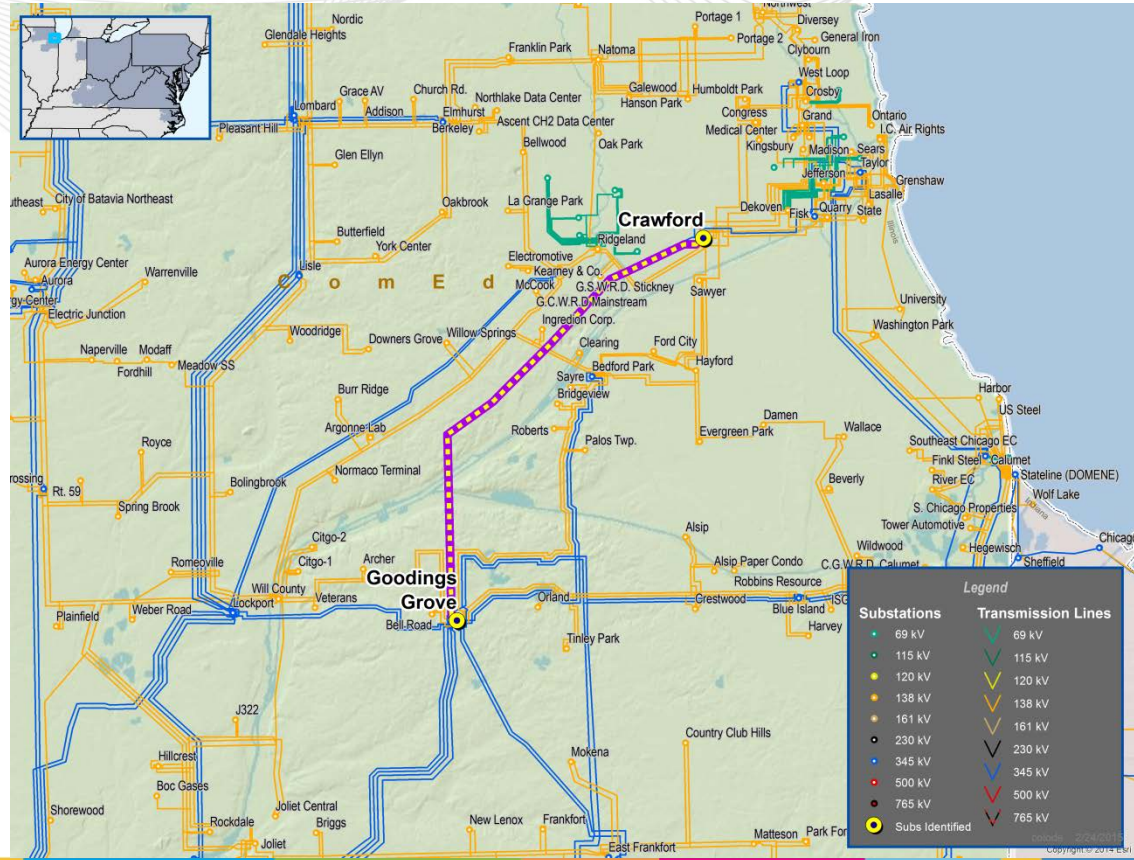
# Reliability Updates

- **Project Scope Change: B1467.2**
- Old Scope: Reconfigure the 138 kV bus at LaPorte Junction station to eliminate a contingency resulting in loss of two 138 kV sources serving the LaPorte area
- New Scope: Build a Bosserman 138KV station approximately 200 feet from the existing LaPorte Junction station. Connected both stations with a 200 feet tie line. All 69 kV and 34.5 kV facilities will remain at LaPorte Junction station and 138kV facilities move to the new station. The New Carlisle – Trail Creek 138KV line loops into the new substation. (B1467)
- Old Estimated Cost: \$3 M
- New Estimated Cost: \$13M
- Required IS Date: 6/1/2015

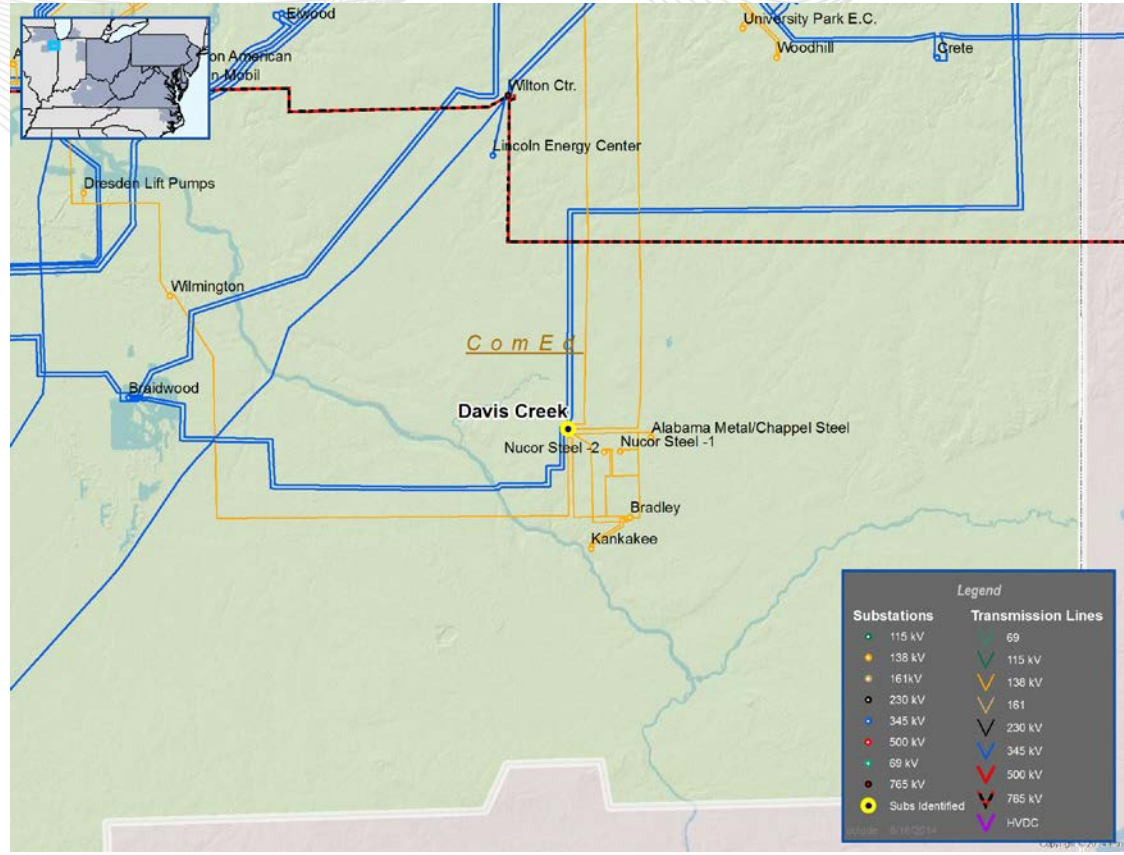


# Supplemental Projects

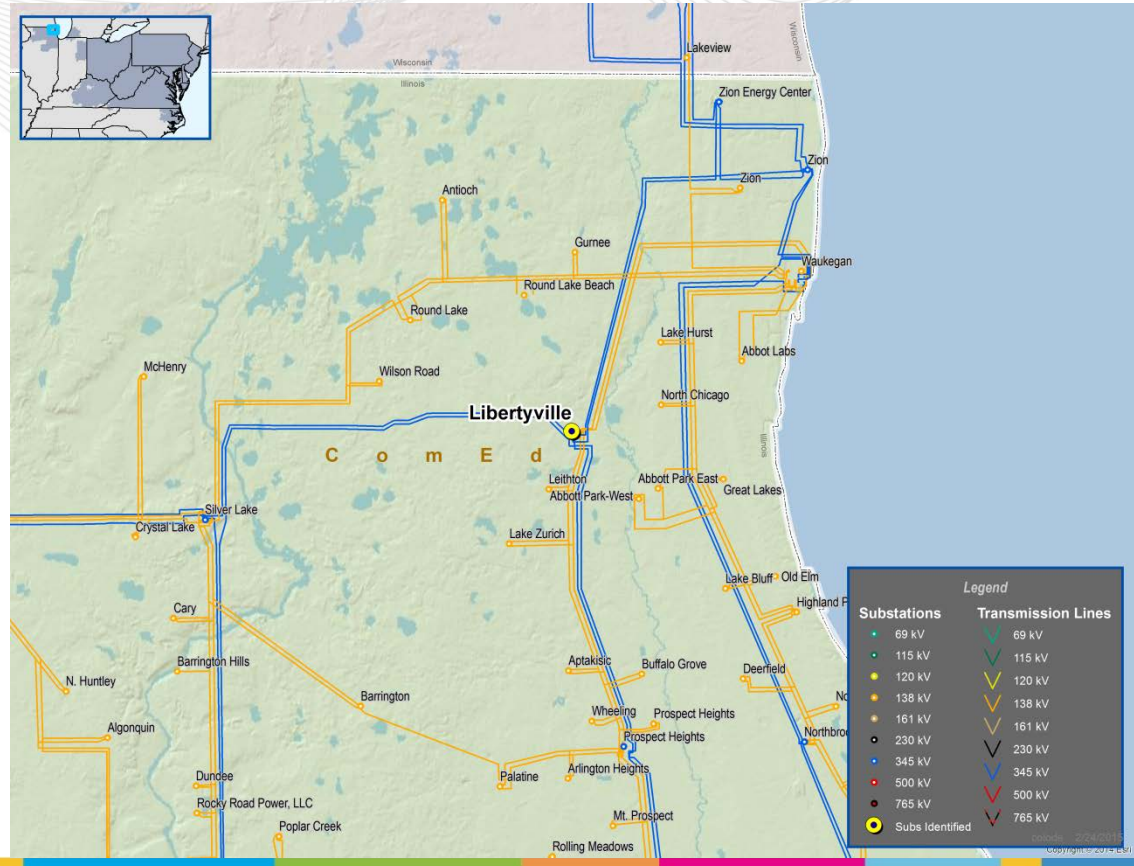
- Supplemental Project
- Reconductor 9.5 miles of 345 kV line  
1311 from Goodings Grove to Crawford.  
(S0880)
- Reason: NERC Alert
- Estimated Cost: \$14.6M
- Projected IS Date: 12/31/2015



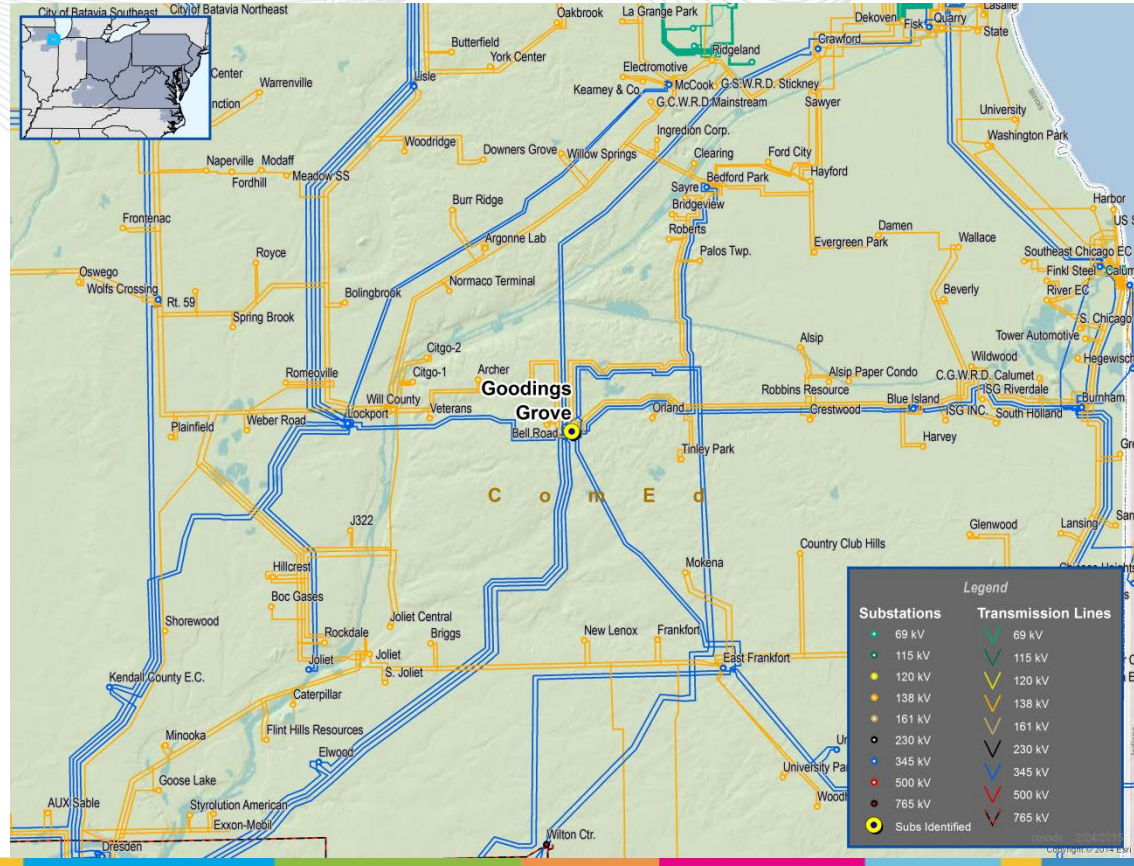
- Supplemental Project
- Davis Creek – Replace 345 kV bus tie 1-2. (S0881)
- Reason: Material Condition
- Estimated Cost: \$2.2M
- Projected IS Date: 10/31/2015



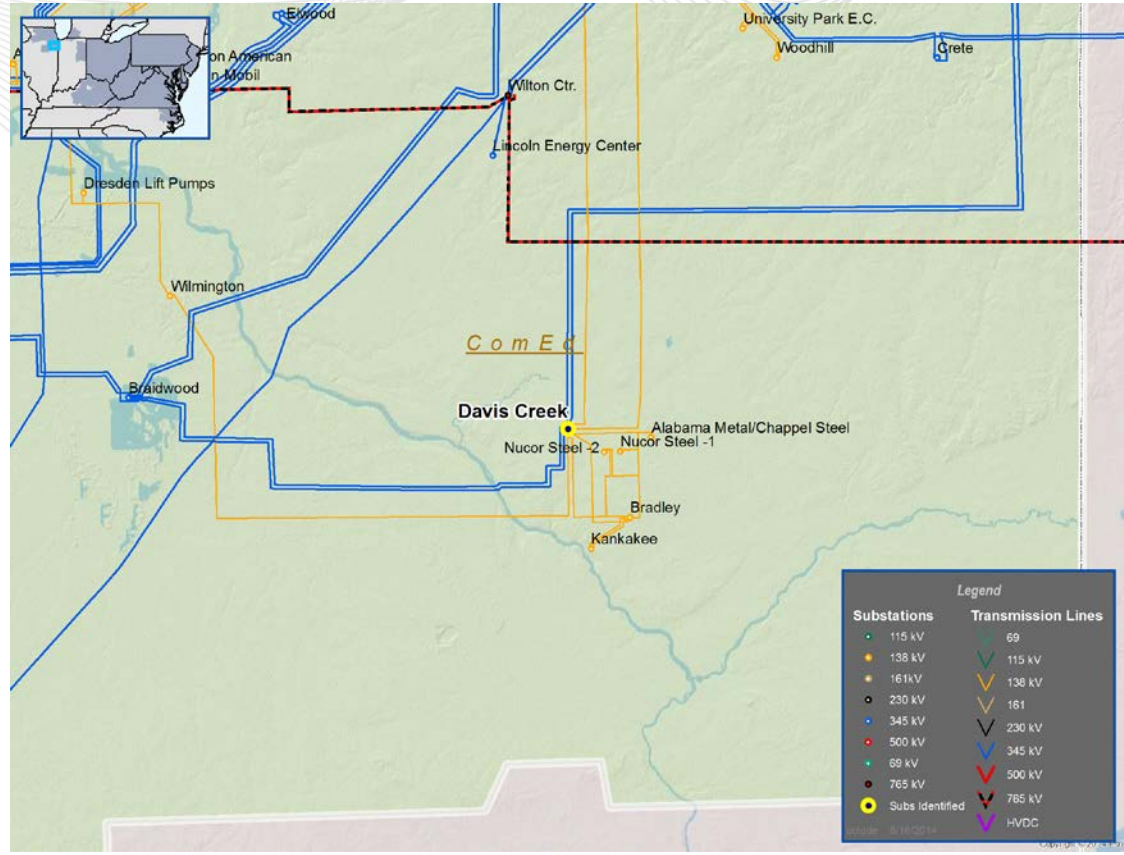
- Supplemental Project
- Libertyville – Replace 345 kV bus tie 8-9. (S0883)
- Reason: Material Condition
- Estimated Cost: \$3.1M
- Projected IS Date: 11/30/2015



- Supplemental Project
- Goodings Grove – Balance Station Load (swap bus positions for 345 kV lines 1312 & 11620 and 345 kV lines 11604 & 11622) and replace 138 kV bus tie 2-3. (S0884)
- Reason: Potential Generator Retirement
- Estimated Cost: \$5.4M
- Projected IS Date: 1/31/2016

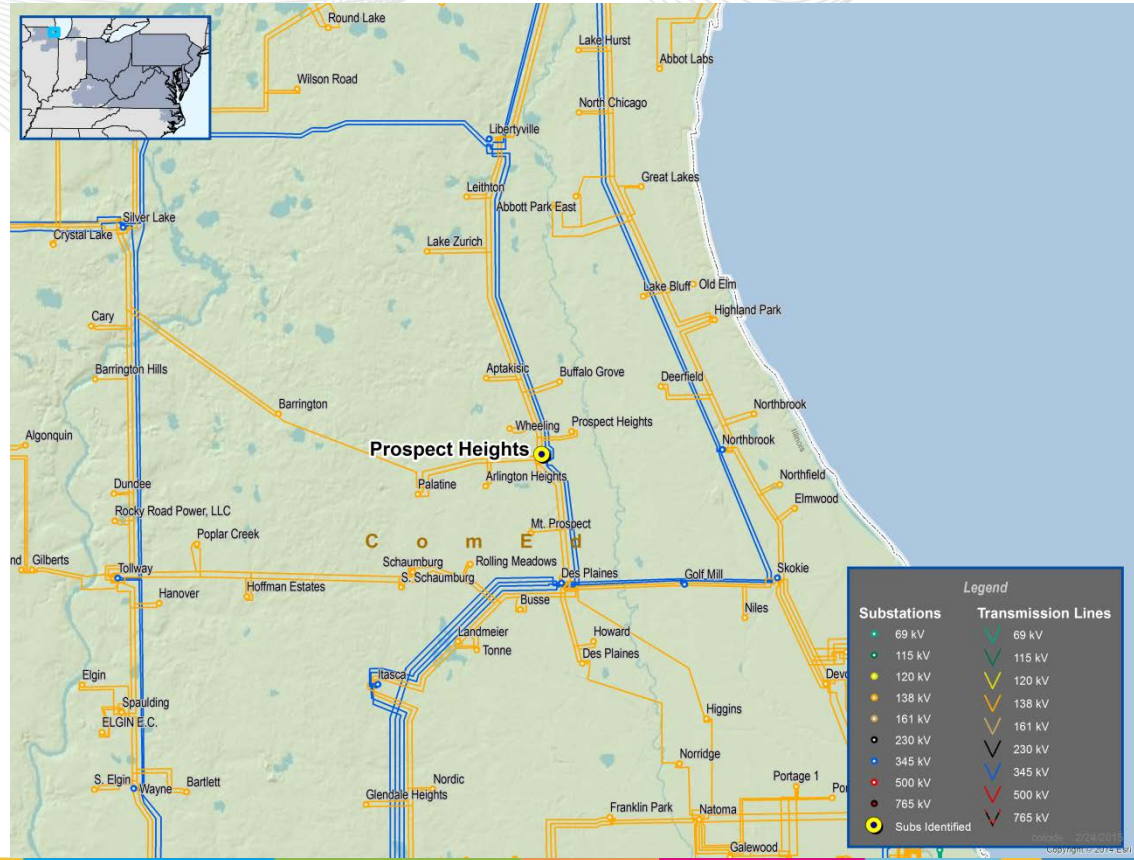


- Supplemental Project
- Rebuild 138 kV line 0902 for 19 miles from Davis Creek to the Davis Creek tap. (S0885)
- Reason: Material Condition
- Estimated Cost: \$23.1M
- Projected IS Date: 12/18/2015

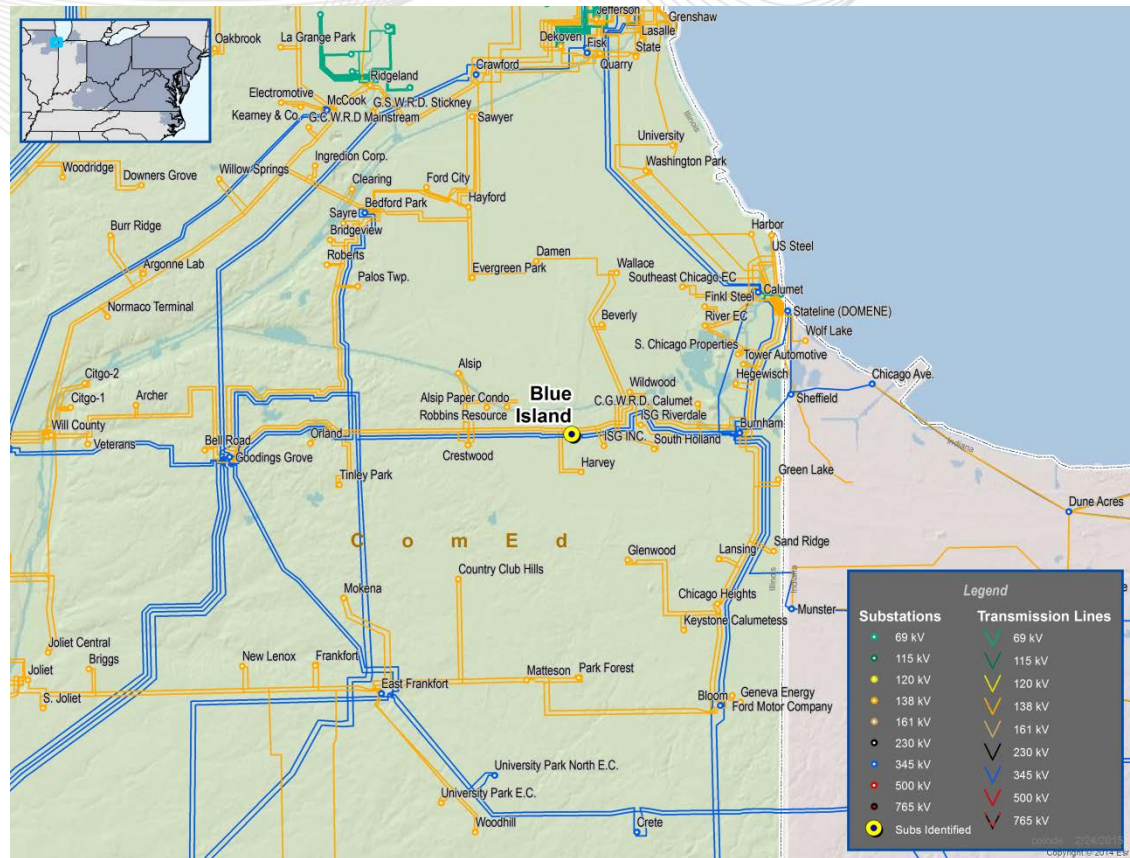




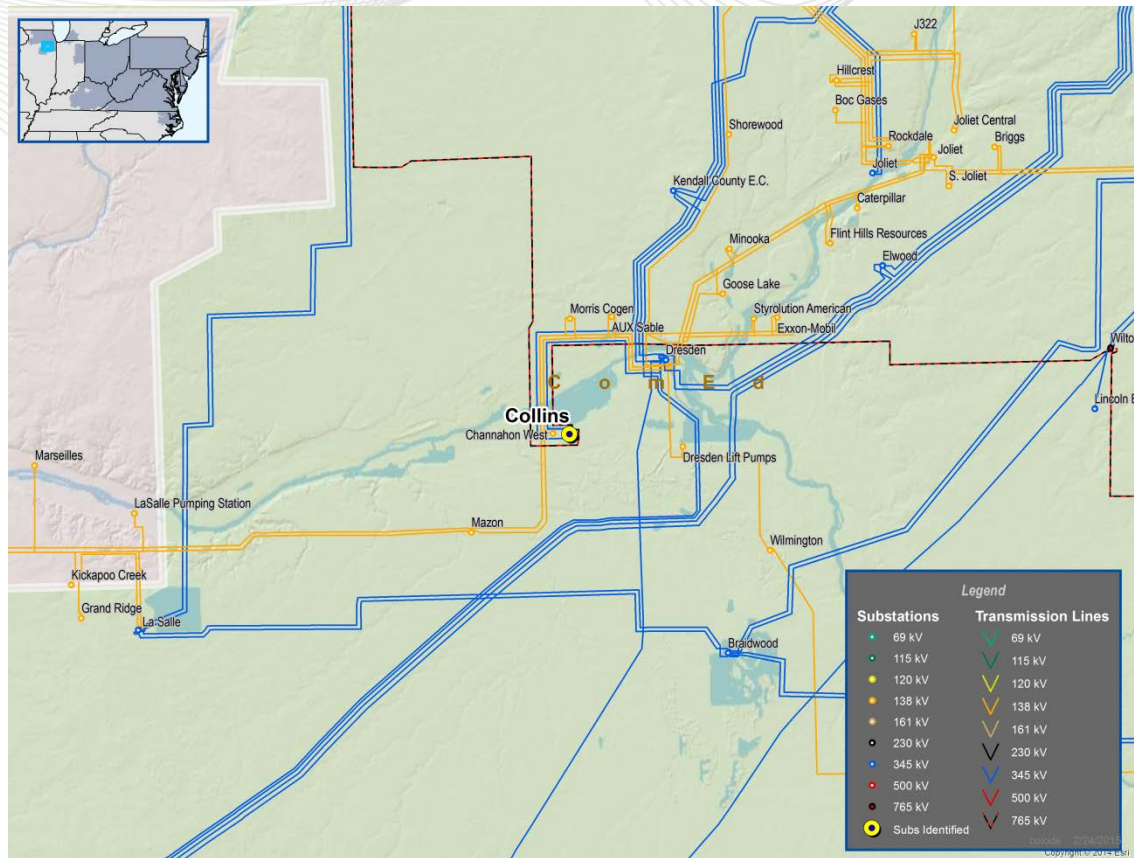
- Supplemental Project
- Prospect Heights – Replace 345/138KV Transformer 81 and move the cap bank from the Transformer 81 tertiary winding to 138 kV bus 1 . (S0886)
- Reason: Material Condition
- Estimated Cost: \$10.8M
- Projected IS Date: 12/31/2015



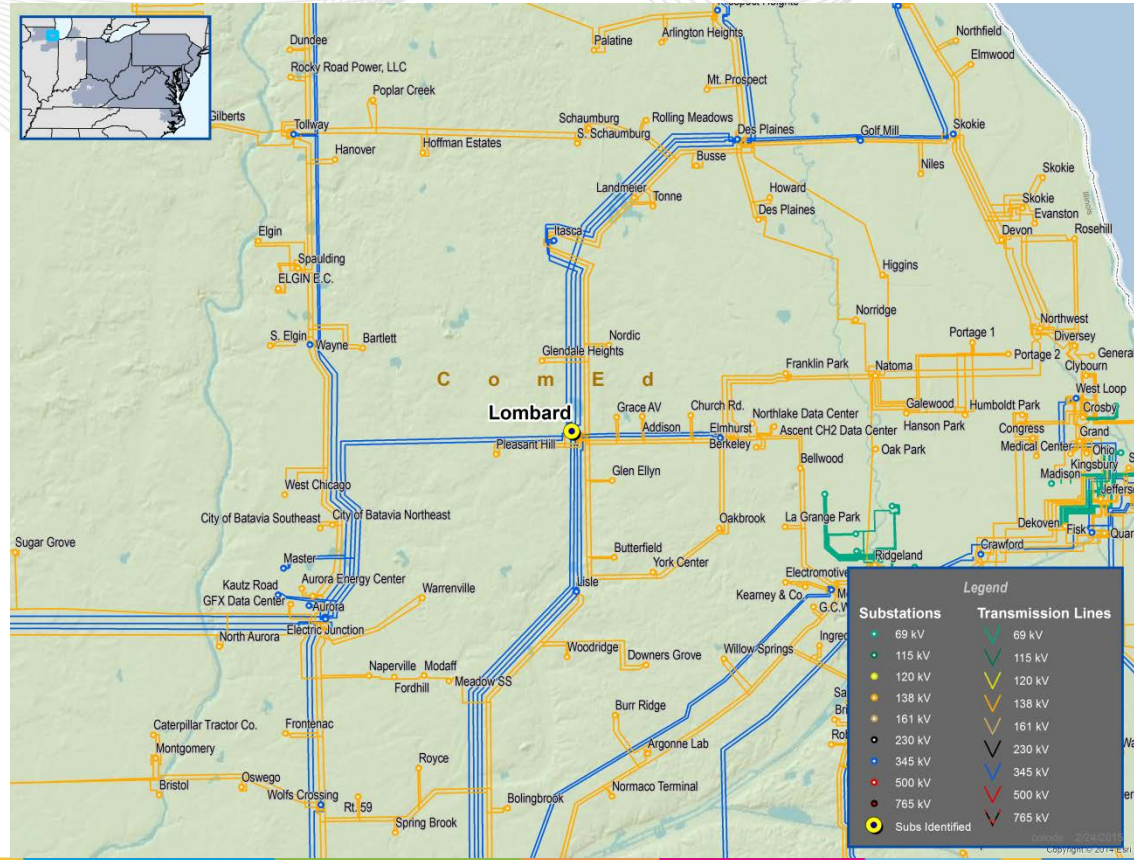
- Supplemental Project
- Blue Island – Replace 345/138kV Transformer 83, install high-side CB. (S0887)
- Reason: Material Condition
- Estimated Cost: \$9.5M
- Projected IS Date: 12/31/2015



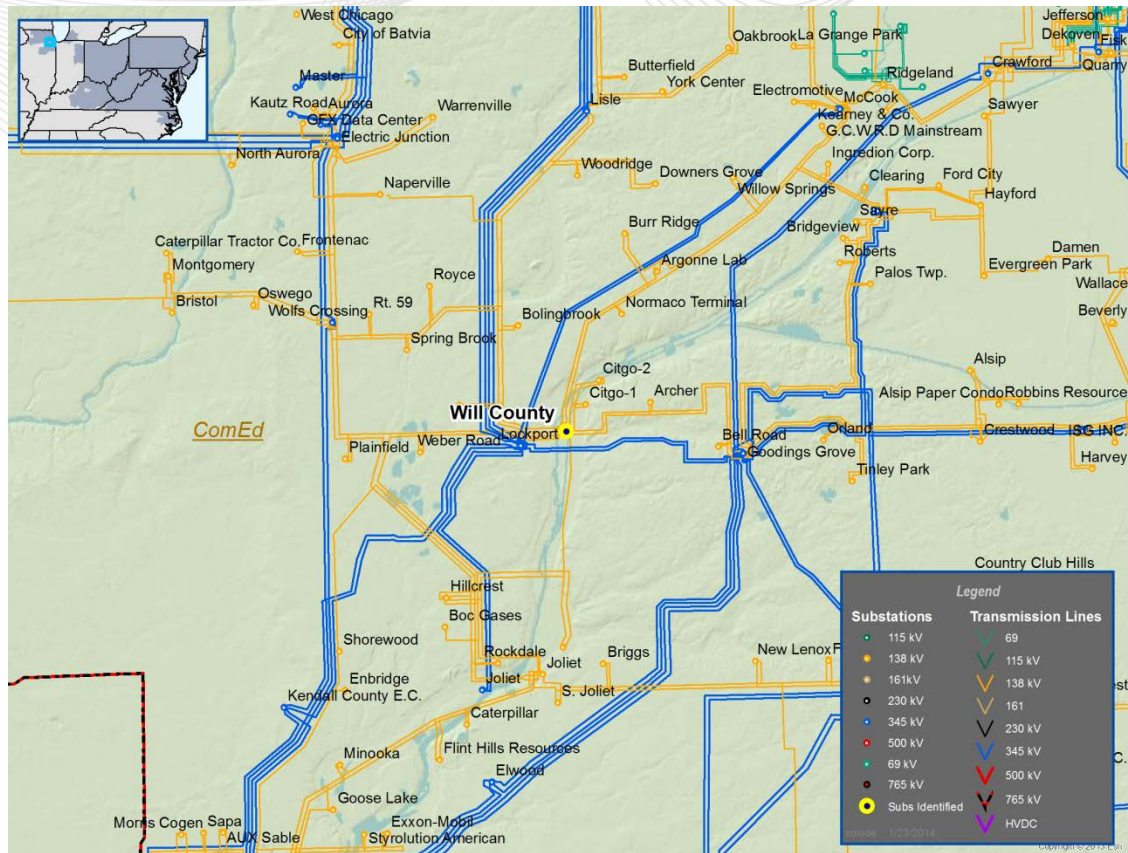
- Supplemental Project
- Collins Station – Replace 765/345KV Transformer 92. (S0888)
- Reason: Material Condition
- Estimated Cost: \$18.8M
- Projected IS Date: 2/1/2016



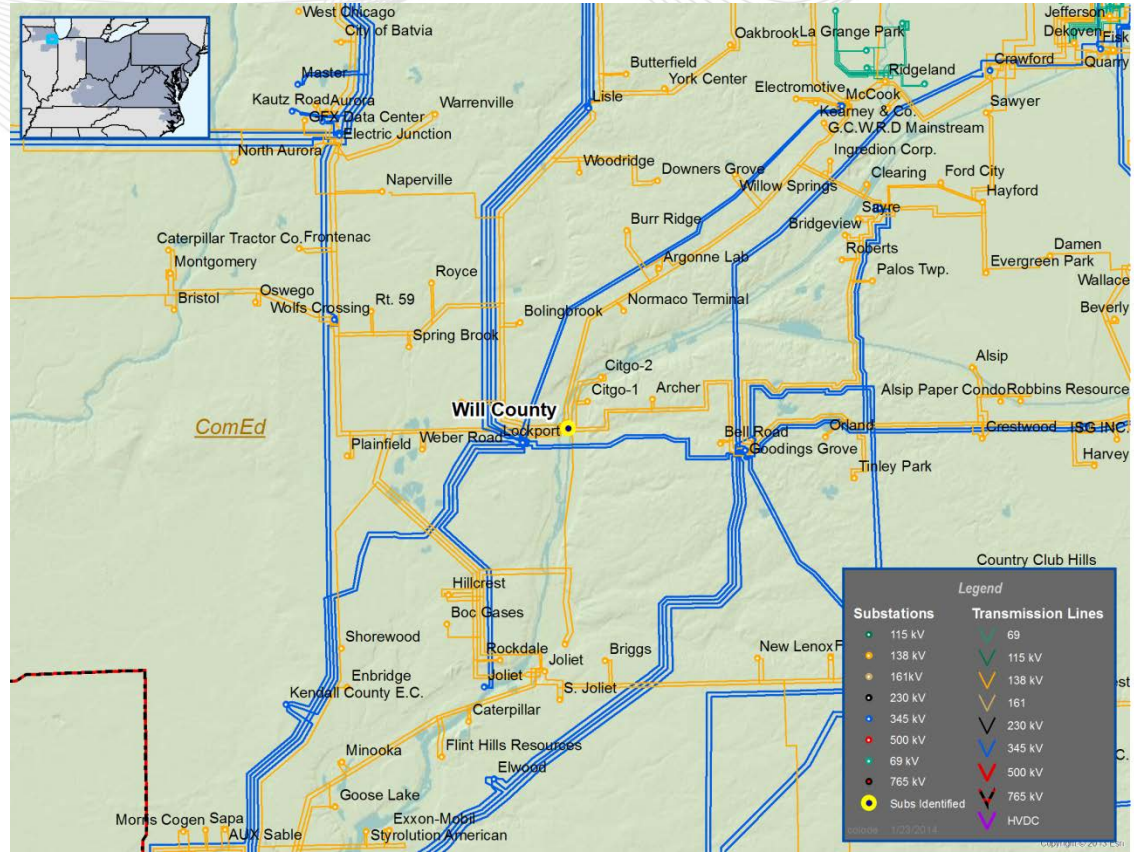
- Supplemental Project
- Lombard – Replace 345/138KV Transformer 82 138 kV CB and 138 kV bus tie 3-4. (S0889)
- Reason: Material Condition
- Estimated Cost: \$3.9M
- Projected IS Date: 12/31/2015



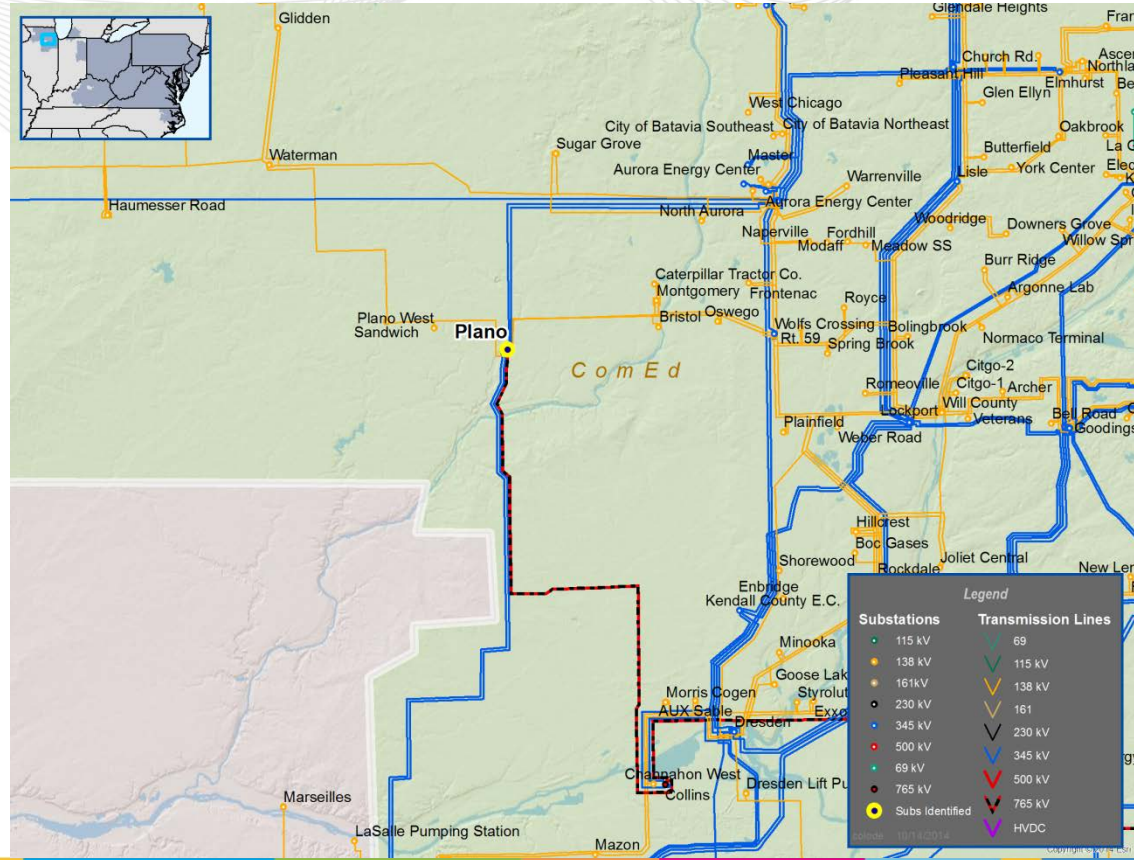
- Supplemental Project
- Will County – Replace 138 kV CB 1802 and 138 kV Bus Tie 2-3. (S0890)
- Reason: Potential Generation Retirement
- Estimated Cost: \$2.8M
- Projected IS Date: 7/1/2015



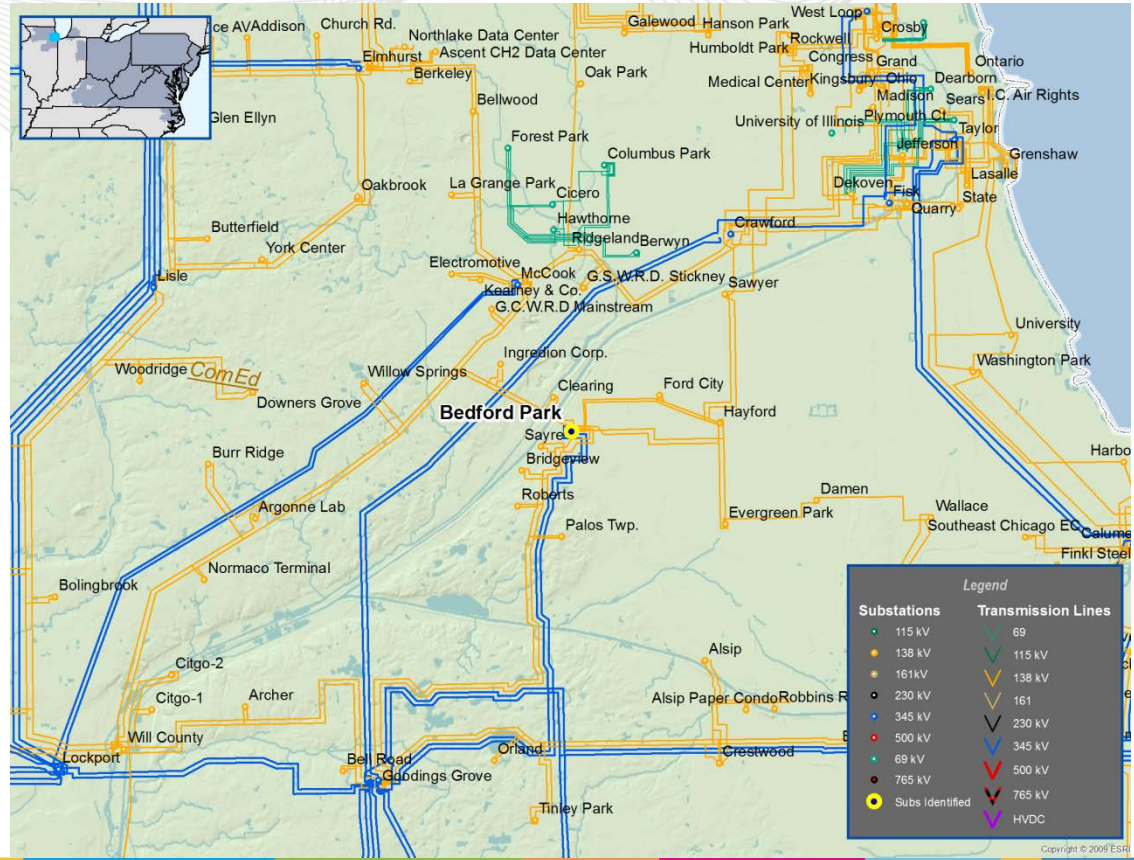
- Supplemental Project
- Will County – Replace 138 kV Transformer 20 138 kV CB. (S0891)
- Reason: Potential Generation Retirement
- Estimated Cost: \$1.5M
- Projected IS Date: 6/1/2016



- Supplemental Project
- Plano – Replace 345 kV Bus Tie 8-9. (S0892)
- Reason: Material Condition
- Estimated Cost: \$2.2M
- Projected IS Date: 6/1/2016

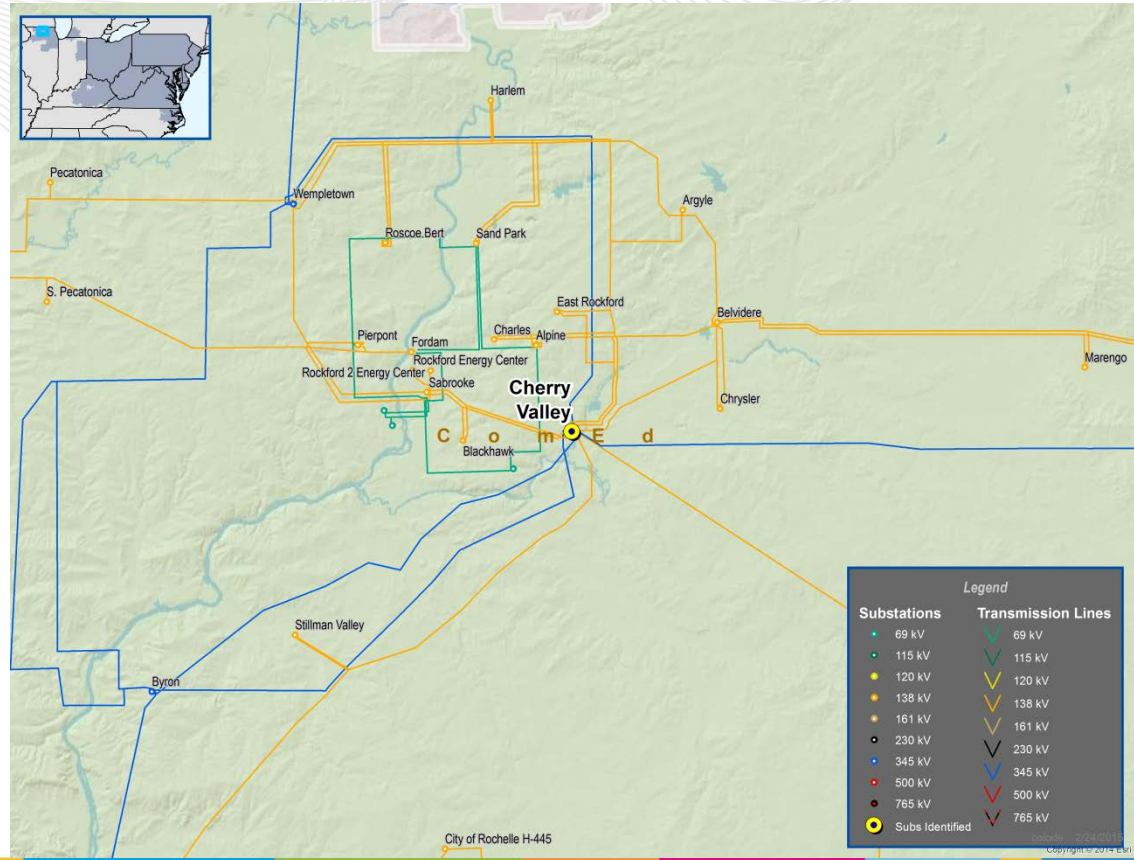


- Supplemental Project
- Bedford Park – Replace 138 kV CB's 11521, 11523, 1324. (S0893)
- Reason: Reliability Improvement
- Estimated Cost: \$4.3M
- Projected IS Date: 12/31/2016

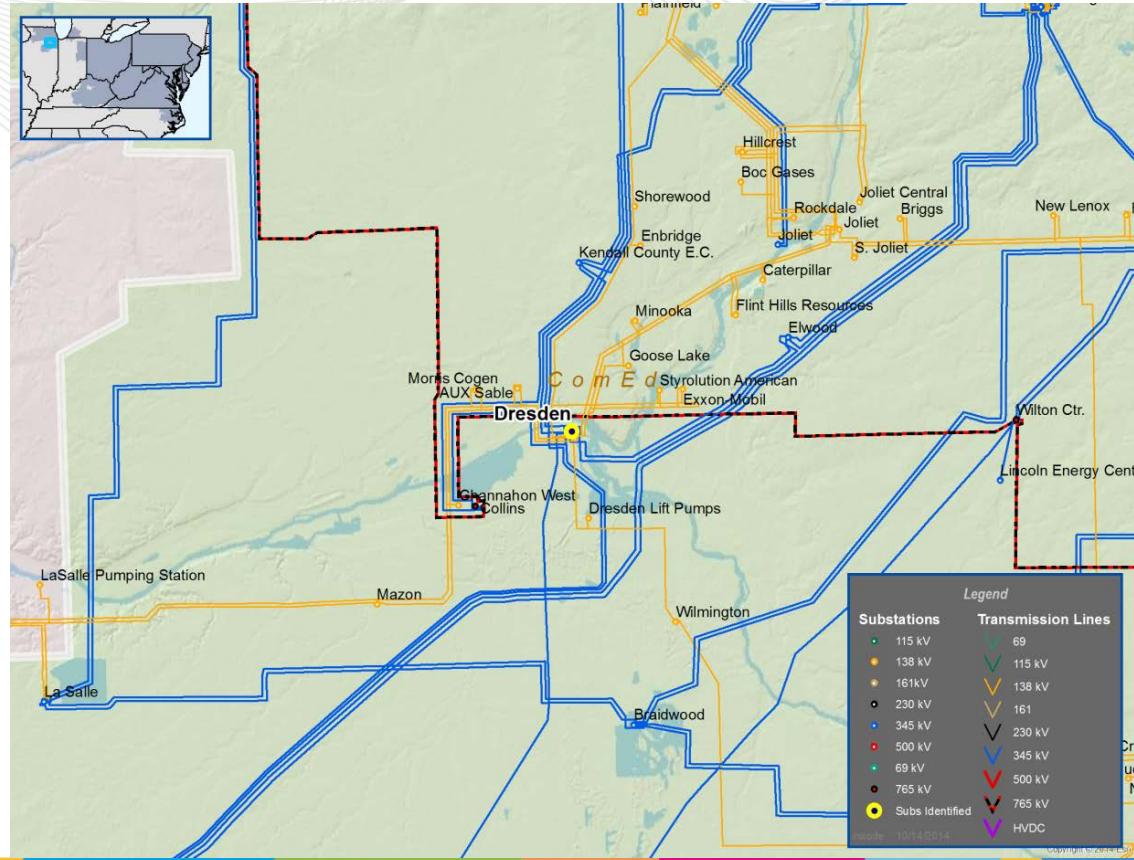




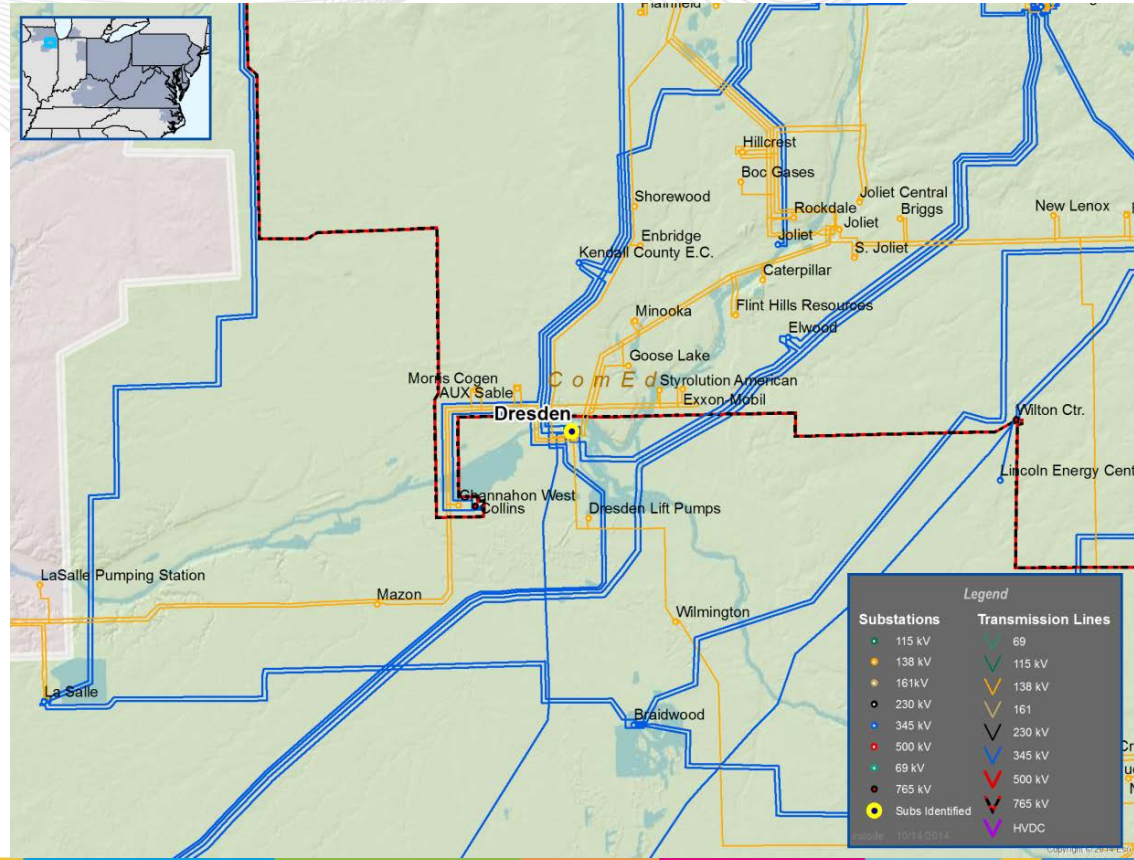
- Supplemental Project
- Cherry Valley – Install three 345 kV CB's and expand 345 kV ring. (S0894)
- Reason: Operating Flexibility
- Estimated Cost: \$16.3M
- Projected IS Date: 12/31/2016



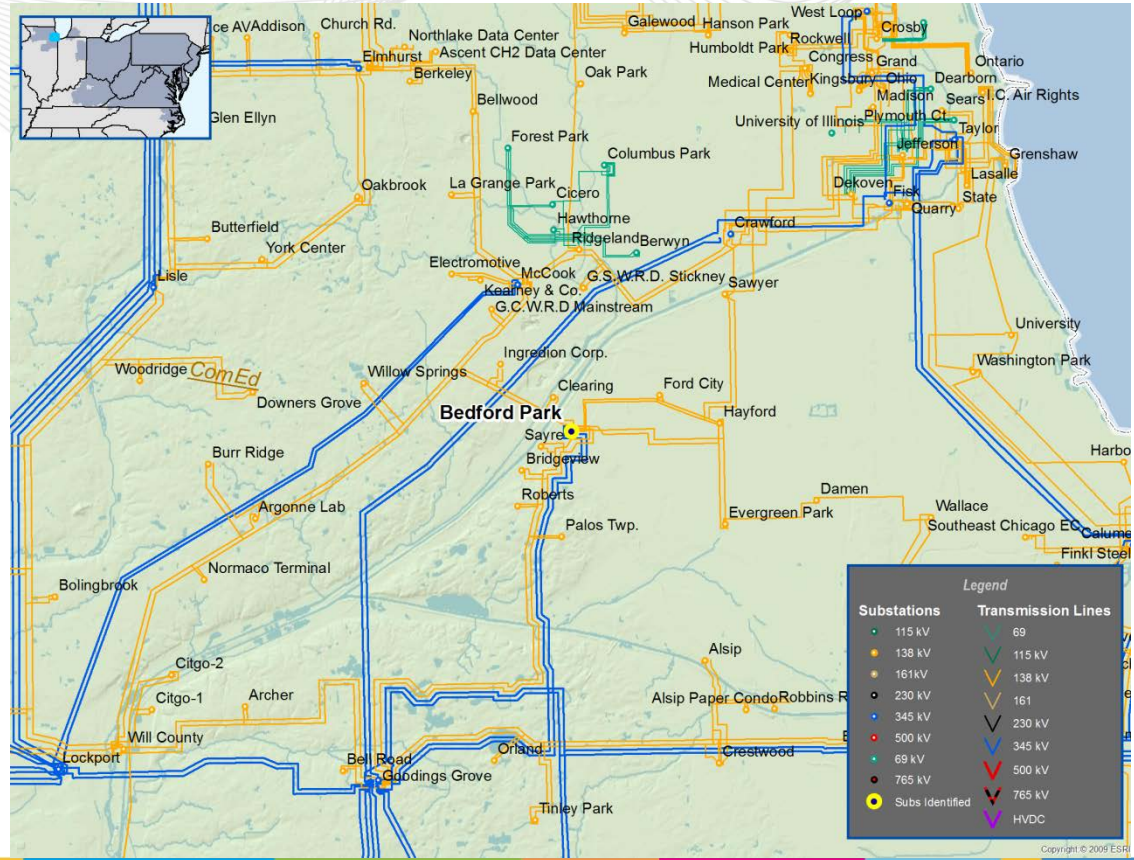
- Supplemental Project
- Dresden – Replace 345/138KV Transformer 81 high side MOD with a circuit switcher. (S0895)
- Reason: Reliability Improvement
- Estimated Cost: \$1M
- Projected IS Date: 12/31/2015



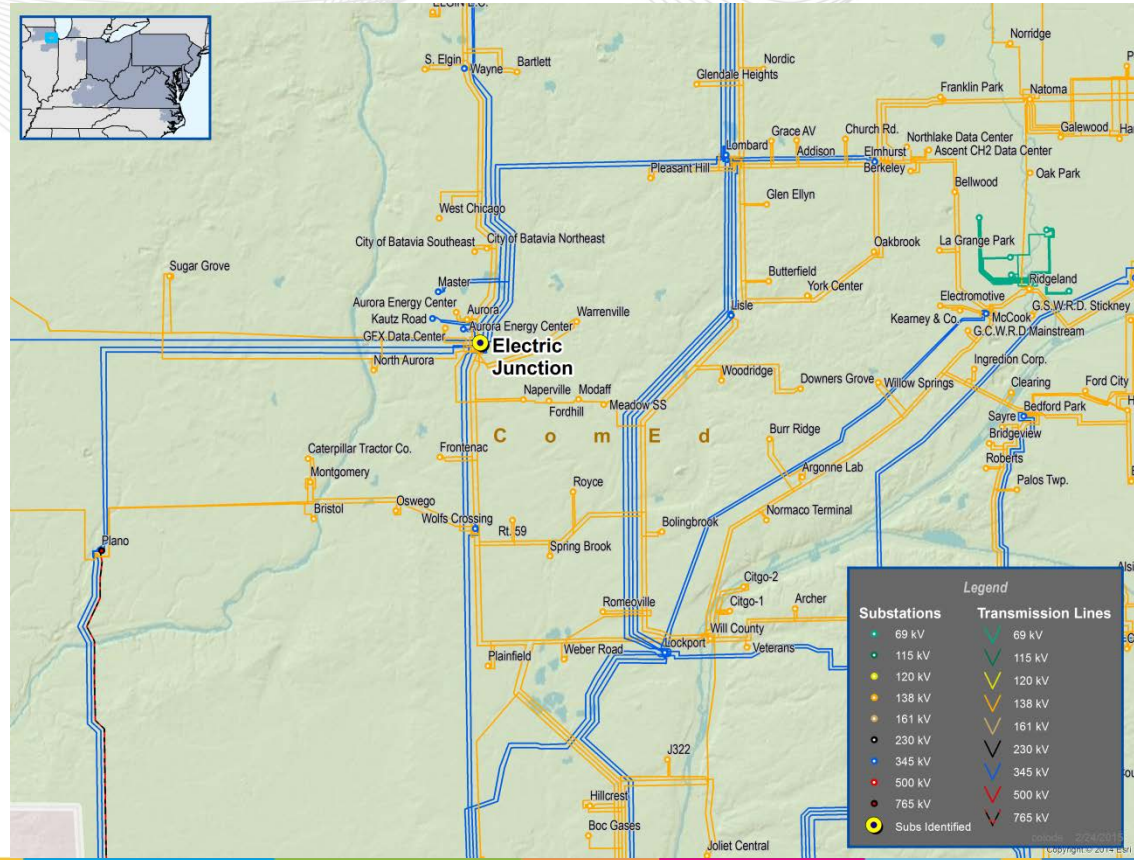
- Supplemental Project
- Dresden – Replace 345/138KV Transformer 83, install high side 345kV CB, replace 138 kV CB's 1205, 1206, 0903, 0904. (S0896)
- Reason: Material Condition
- Estimated Cost: \$18.3M
- Projected IS Date: 12/31/2016



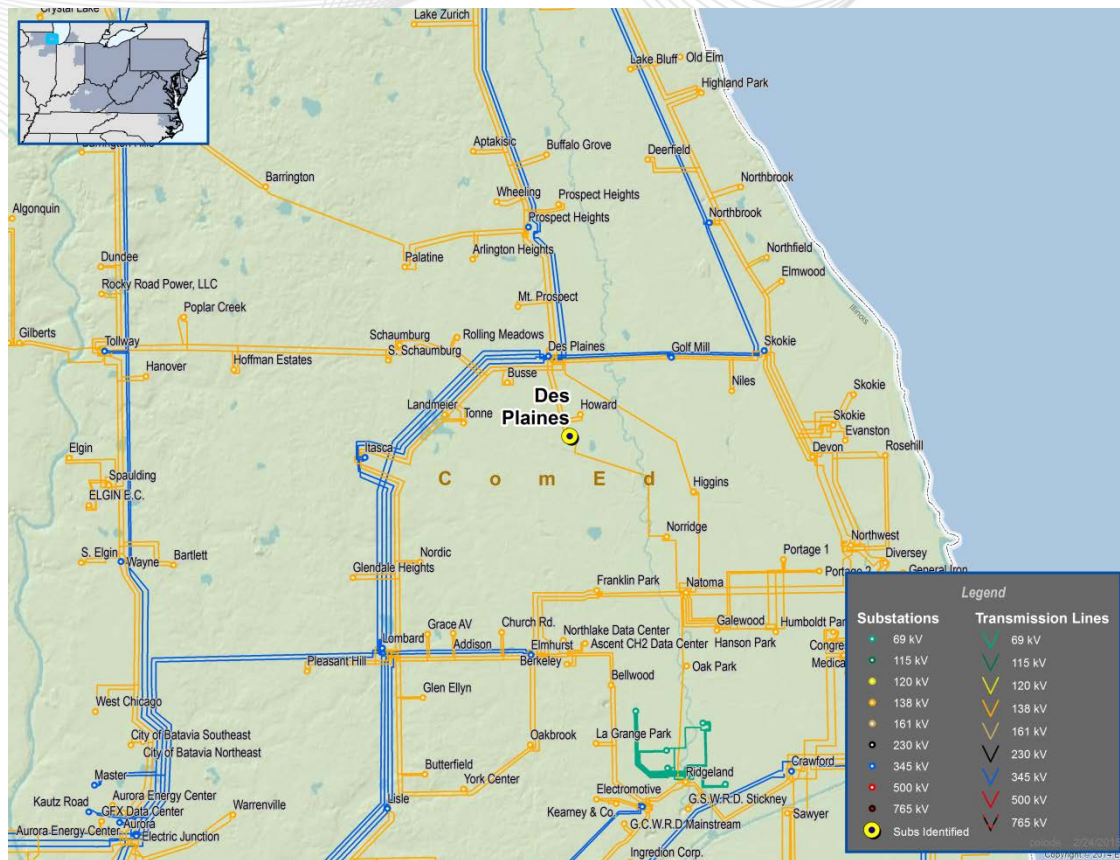
- Supplemental Project
- Bedford Park – Replace 345/138KV Transformer 82, move cap bank from tertiary to 138KV bus 3, replace Transformer 84 high side 345KV MOD with a CB. (S0897)
- Reason: Material Condition
- Estimated Cost: \$21.2M
- Projected IS Date: 12/31/2015



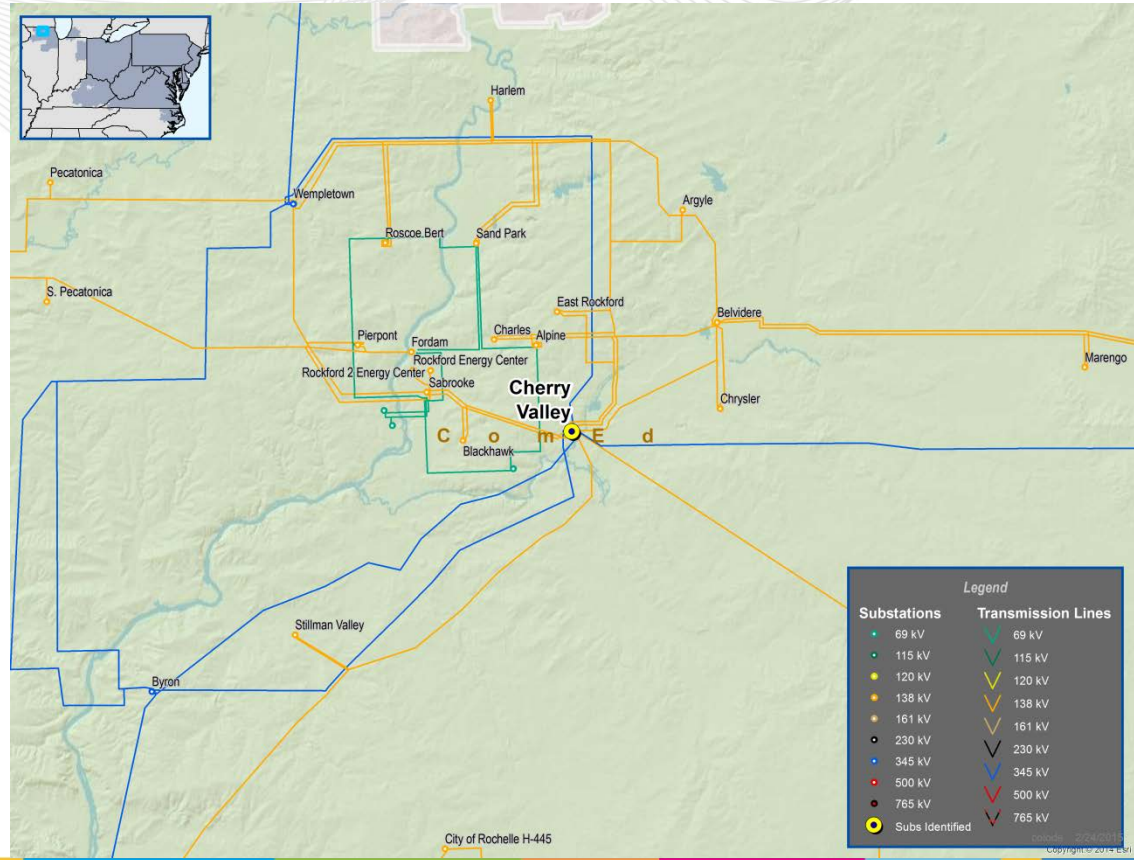
- Supplemental Project
- Electric Junction – Replace 345/138KV Transformer 81, install 345KV high side CB, move cap bank from tertiary to 138KV bus 1, install Transformer 82 & 84 high side 345KV CBs, replace 345 kV 11126 CB. (S0898)
- Reason: Material Condition
- Estimated Cost: \$28.7M
- Projected IS Date: 12/31/2016



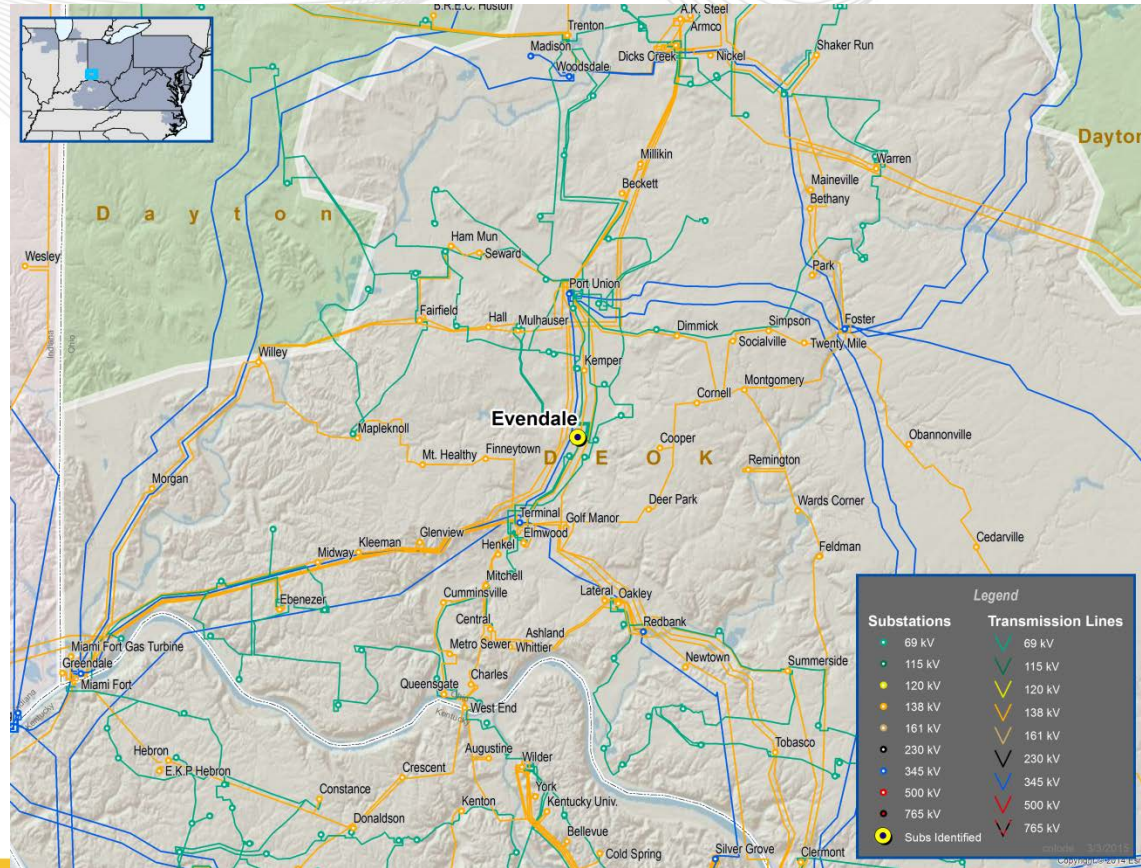
- Supplemental Project
- Des Plaines – Install 4 Transformer high side 345KV CBs for transformer 81, 82, 83, &84, replace 138 kV Bus Tie 2-3. (S0899)
- Reason: Operating Flexibility
- Estimated Cost: \$12.7M
- Projected IS Date: 12/31/2016



- Supplemental Project
- Cherry Valley – Replace 345/138kV Transformer 81, install high side 345kV circuit switcher, move cap bank from tertiary to 138 kV bus 1. (S0900)
- Reason: Material Condition
- Estimated Cost: \$21.5M
- Projected IS Date: 12/31/2015

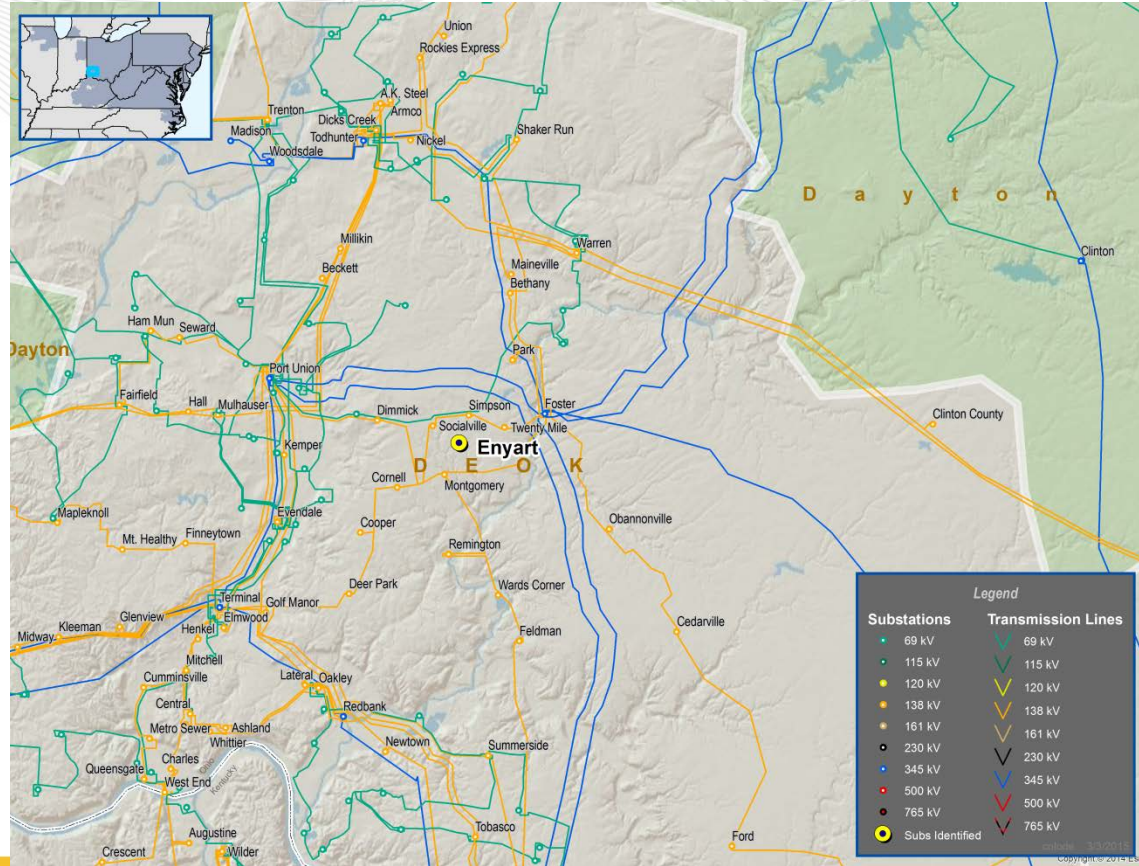


- Supplemental Project
- Reconfigure Evendale 69kV substation. (S0882)
- Reason: Reliability Improvement
- Estimated Cost: \$0.29M
- Projected IS Date: 6/1/2016

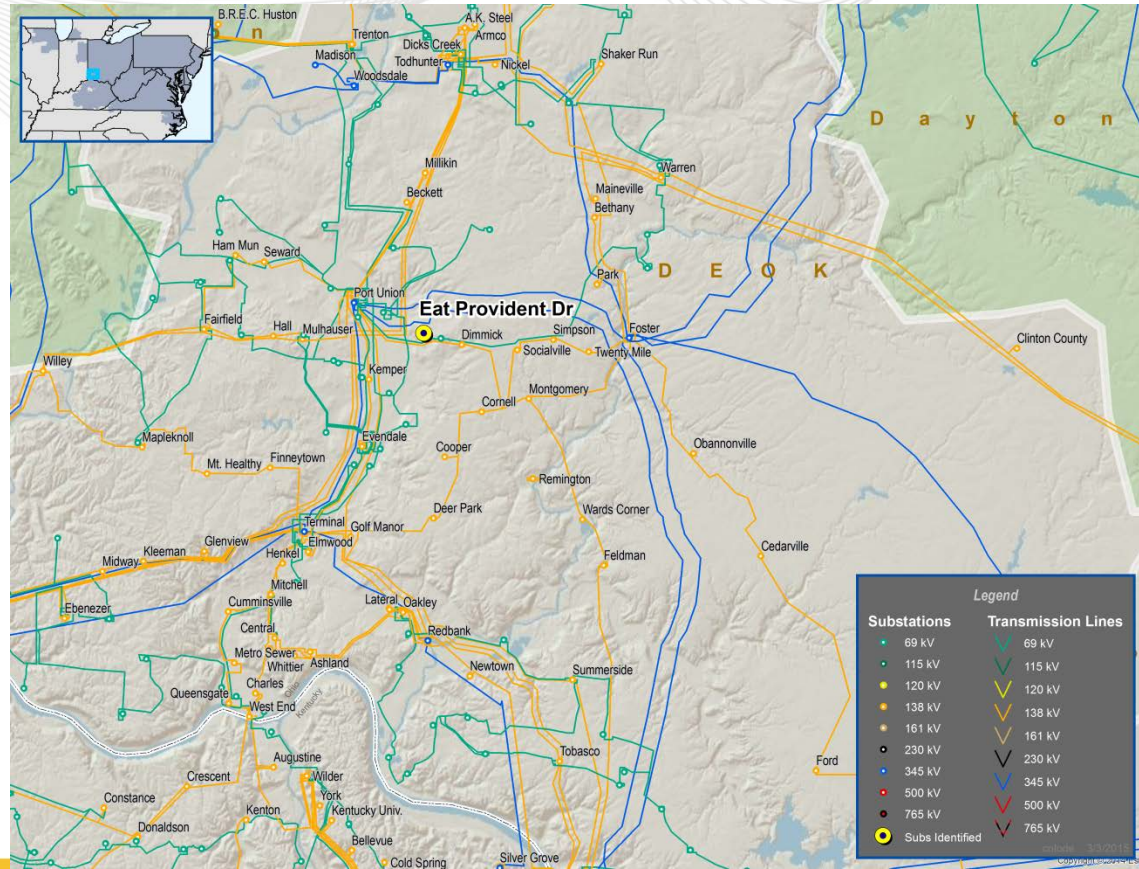




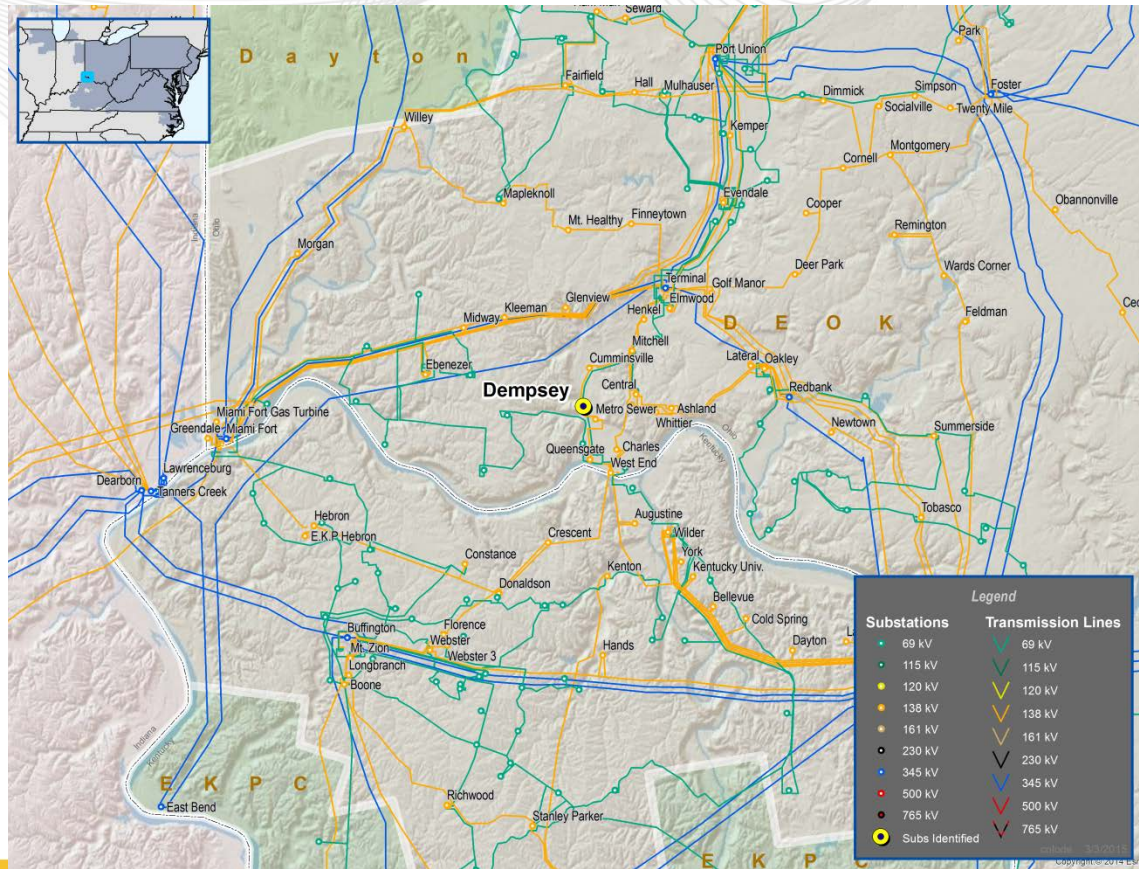
- Supplemental Project
- Build a new 22.4MVA 138/12kV substation at Enyart. (S0904)
- Reason: Load Growth
- Estimated Cost: \$3.38M
- Projected IS Date: 12/31/2015



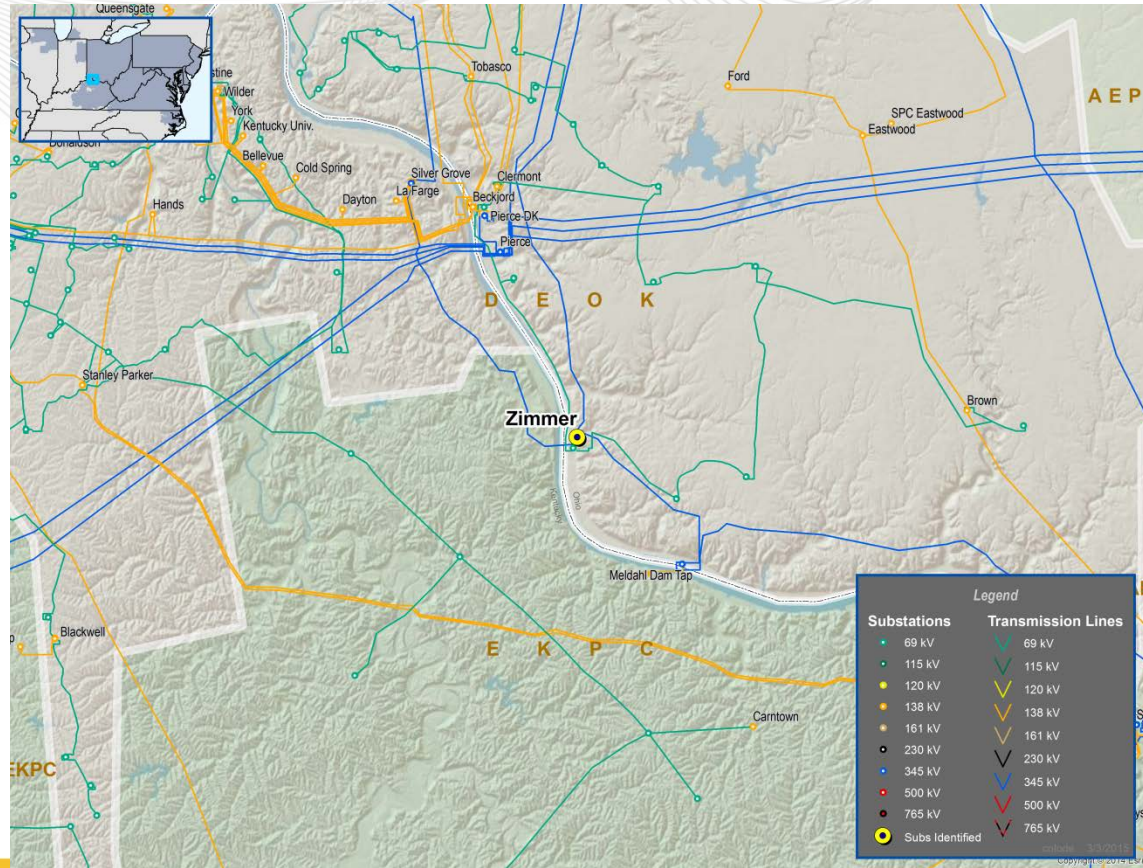
- Supplemental Project
- Build a New 22.4MVA 138/12kV substation at E. Provident Dr. (S0905)
- Reason: Load Growth
- Estimated Cost: \$3.72M
- Projected IS Date: 12/1/2015



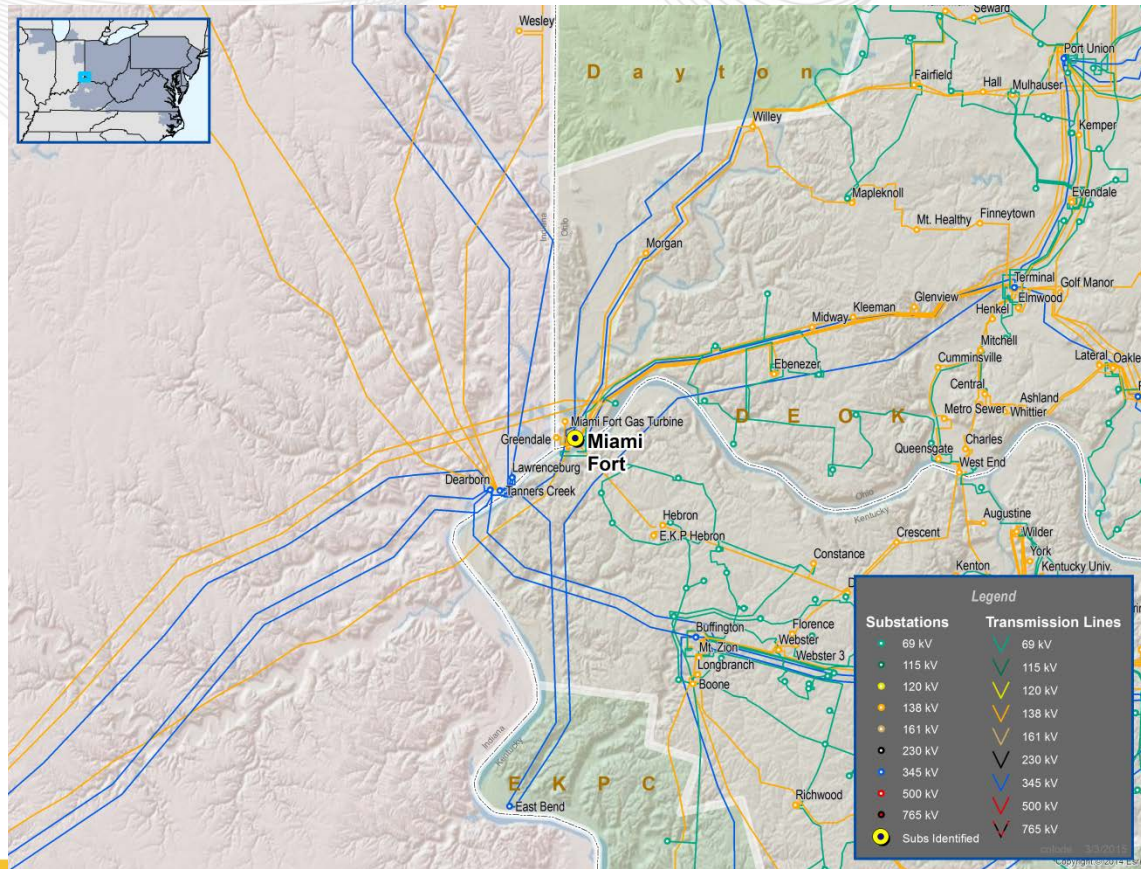
- Supplemental Project
- Build a new 22.4MVA 138/12kV substation at Dempsey. (S0906)
- Reason: Load Growth
- Estimated Cost: \$4.57M
- Projected IS Date: 6/1/2017



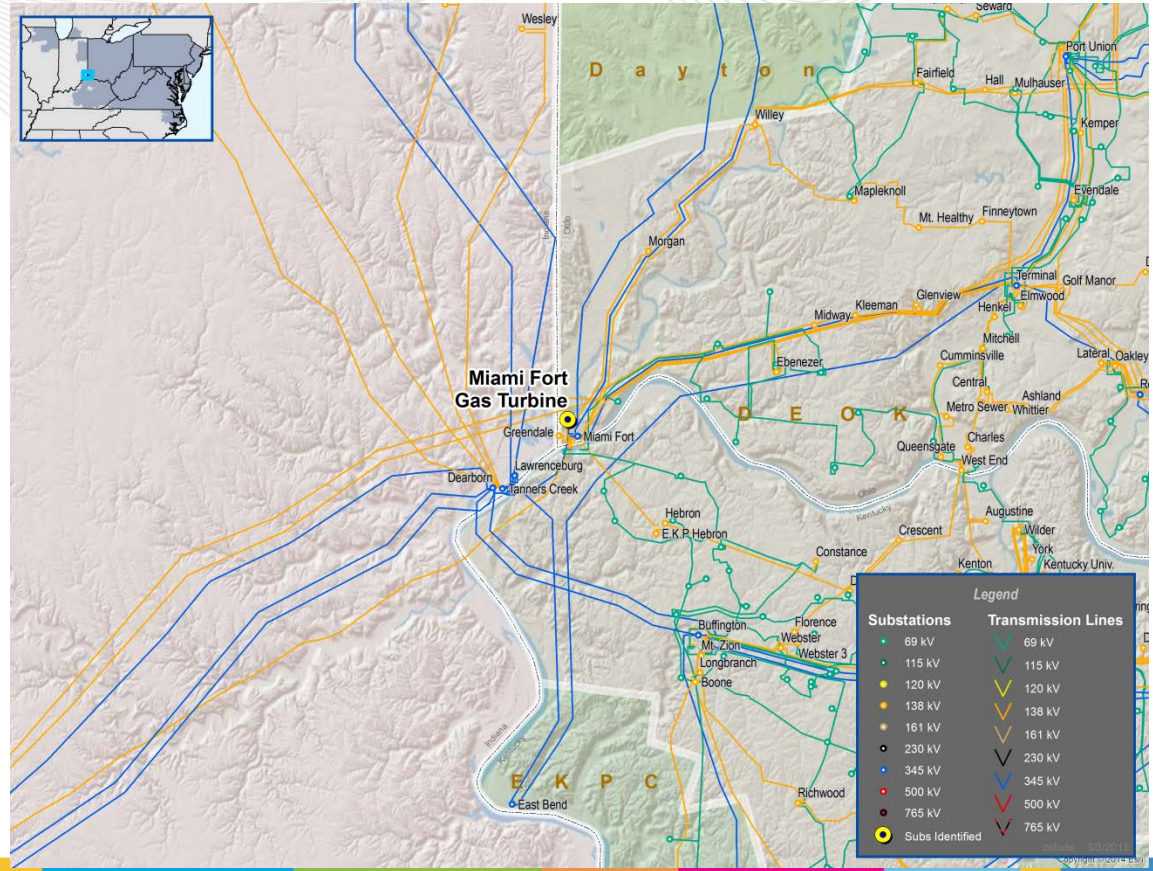
- Supplemental Project
- Install a new 345kV synchronizing circuit breaker at Zimmer. (S0907)
- Reason: Generation Separation
- Estimated Cost: \$1.7M
- Projected IS Date: 12/31/2016



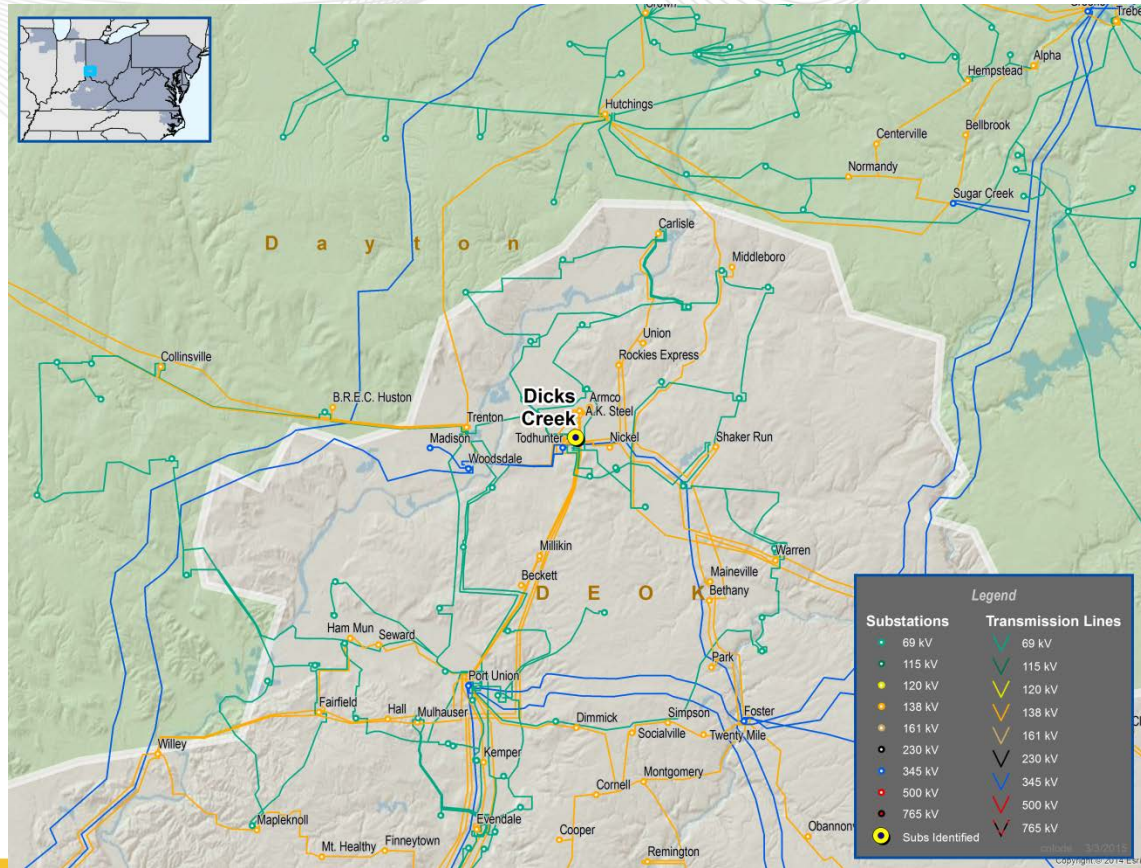
- Supplemental Project
- Install 2 new 345kV synchronizing circuit breakers at Miami Fort (S0908)
- Reason: Generation Separation
- Estimated Cost: \$6.33M
- Projected IS Date: 6/1/2017



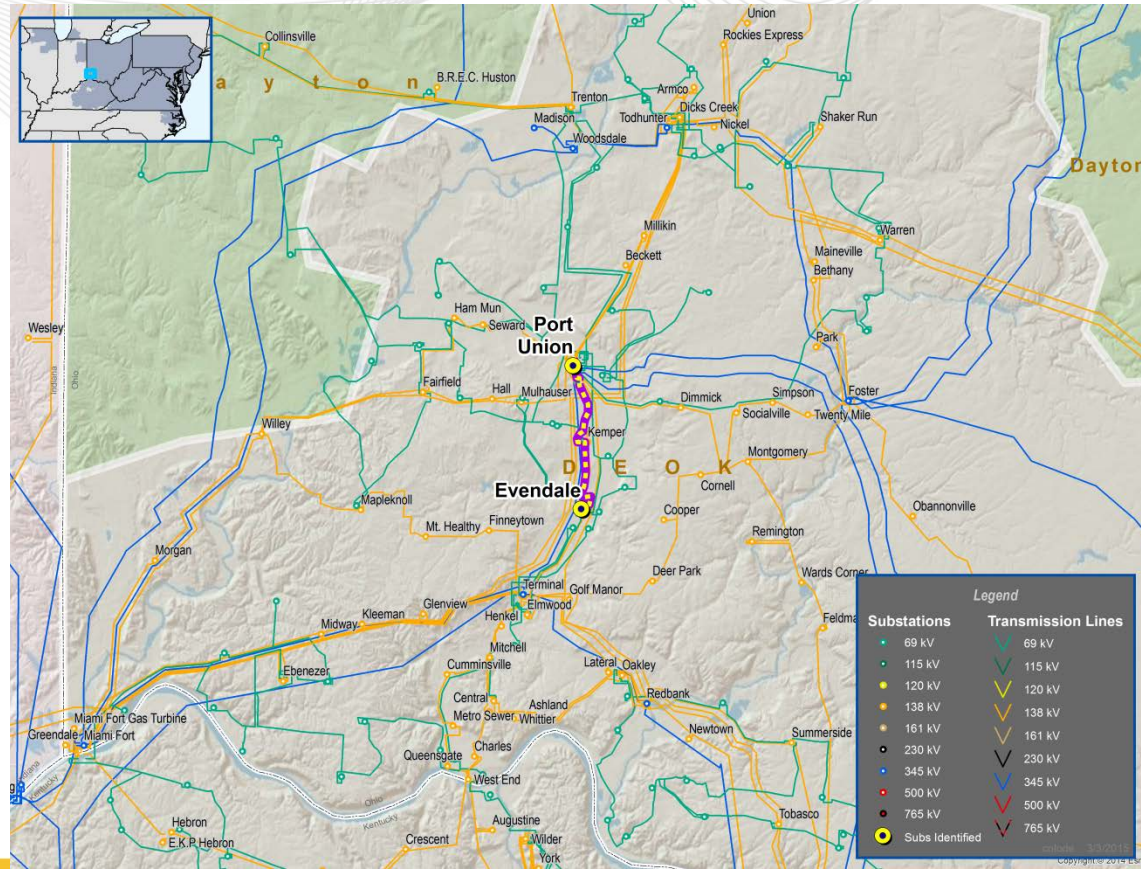
- Supplemental Project
- Install (3) 138kV circuit breakers Miami Fort GT (S0909)
- Reason: Generation Separation
- Estimated Cost: \$2.64M
- Projected IS Date: 6/1/2017



- Supplemental Project
- Install (2) new 138kV circuit breakers at Dicks Creek (S0910)
- Reason: Generation Separation
- Estimated Cost: \$3.0M
- Projected IS Date: 6/1/2016

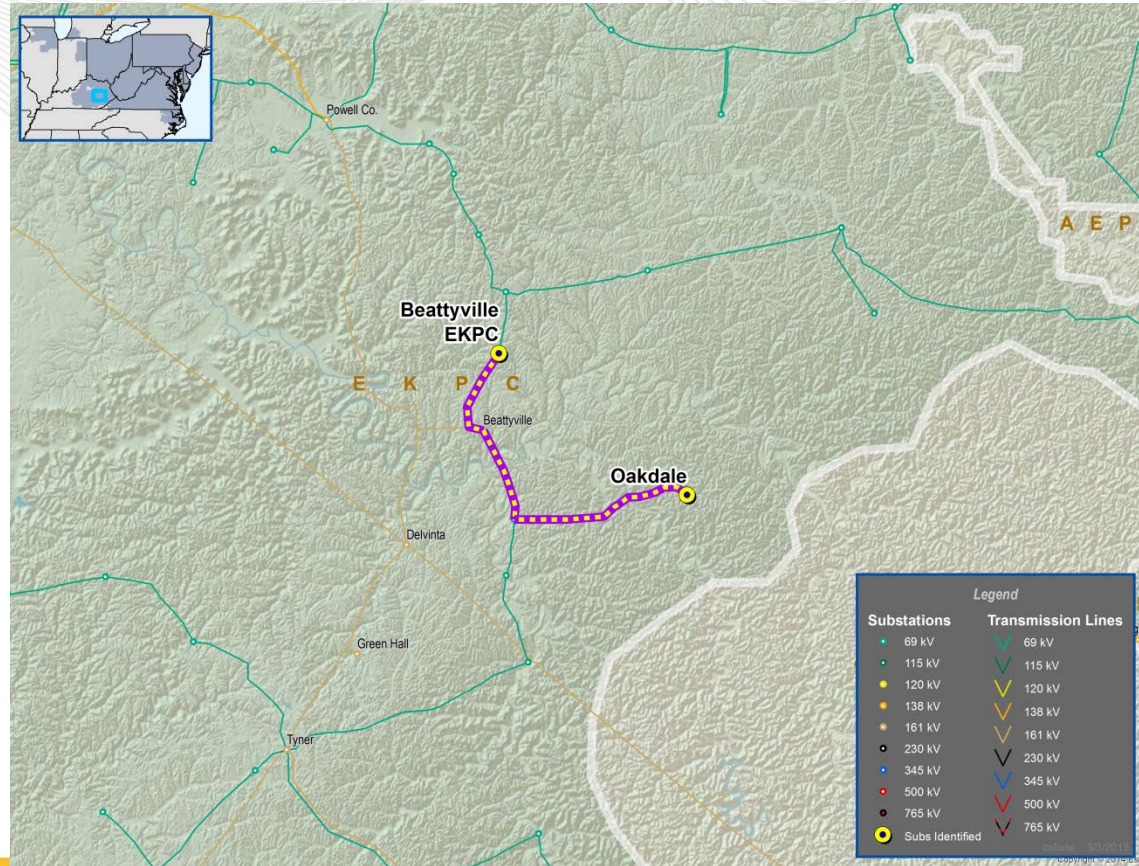


- Supplemental Project
- Extend the Port Union – Evendale 69kV Feeder 3861 to enable loop feed to existing General Mills substation location (S0911)
- Reason: Reliability Improvement
- Estimated Cost: \$0.88M
- Projected IS Date: 6/1/2016

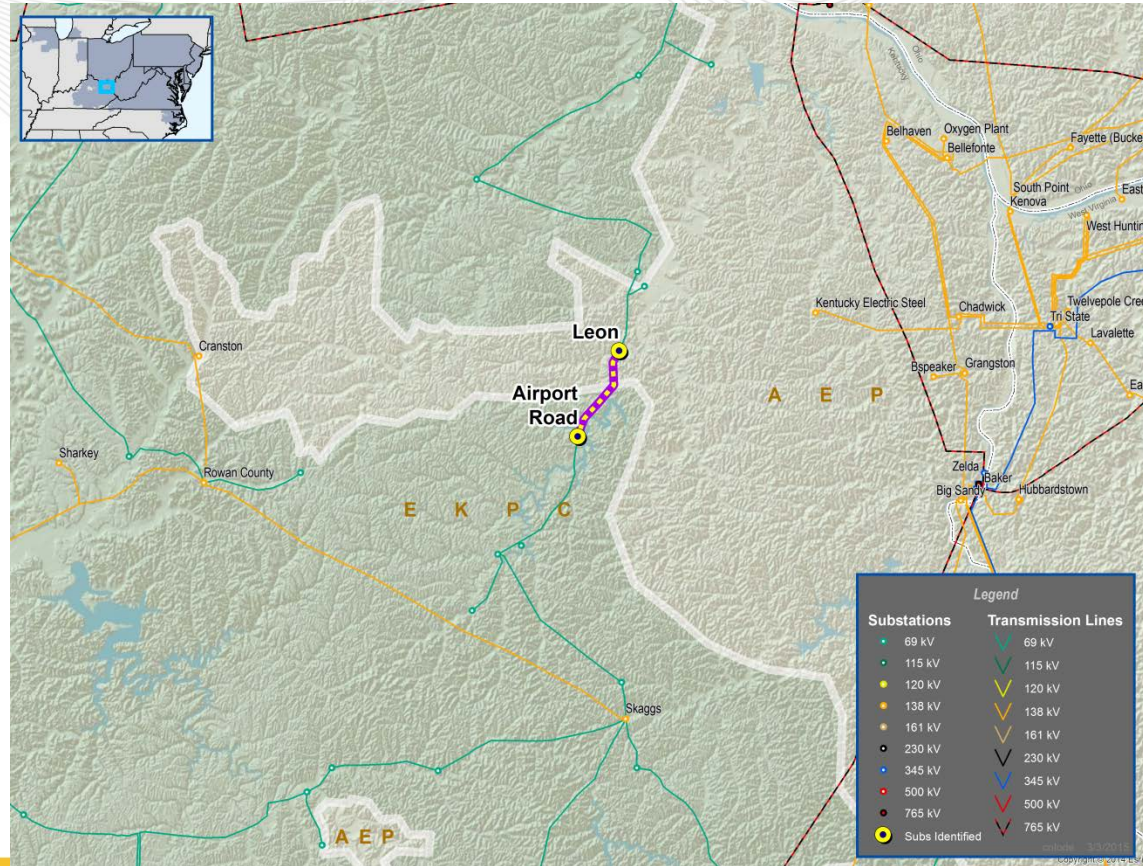




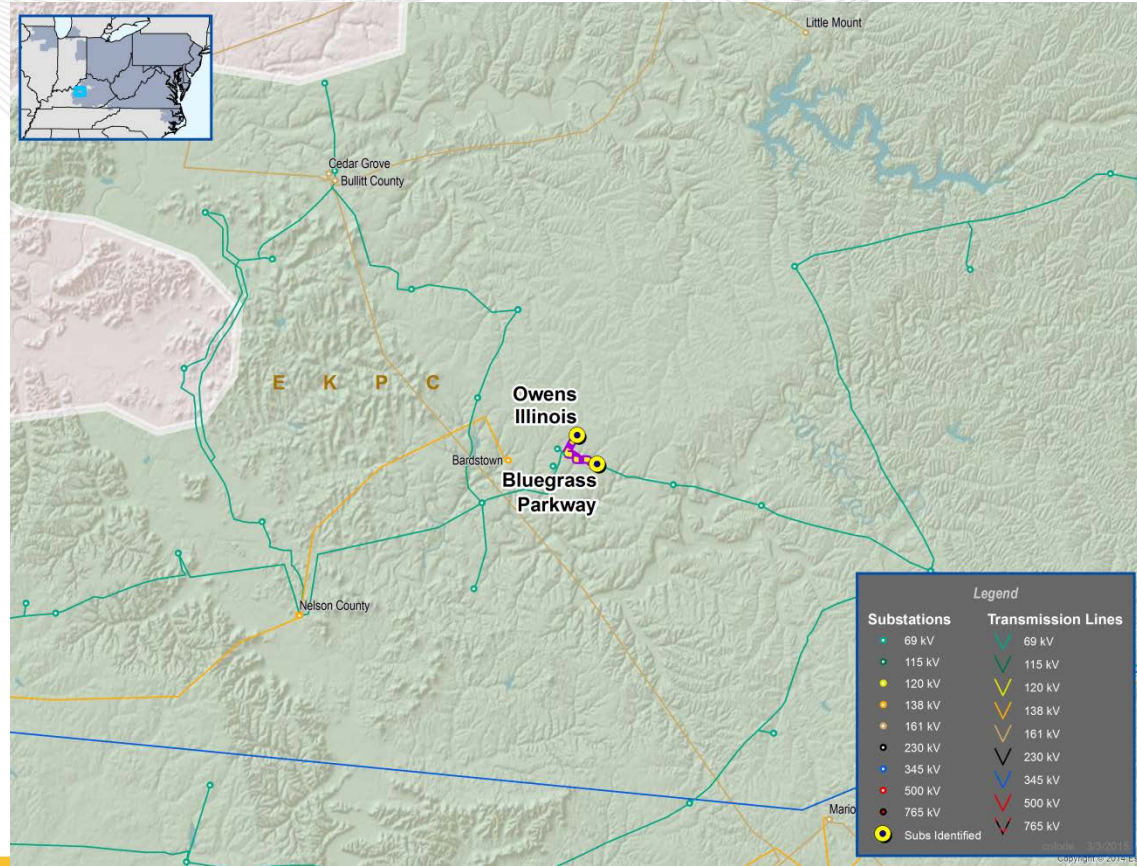
- **Supplemental Project**
- Construct a new 69 KV line from Beattyville Distribution-Oakdale using 556 ACSR. Operate this new line normally closed and operate the existing Oakdale Jct.-Oakdale line normally open. (S0914)
- Reason: Reliability Improvement
- Estimated Cost: \$8.5M
- Projected IS Date: 12/1/2017



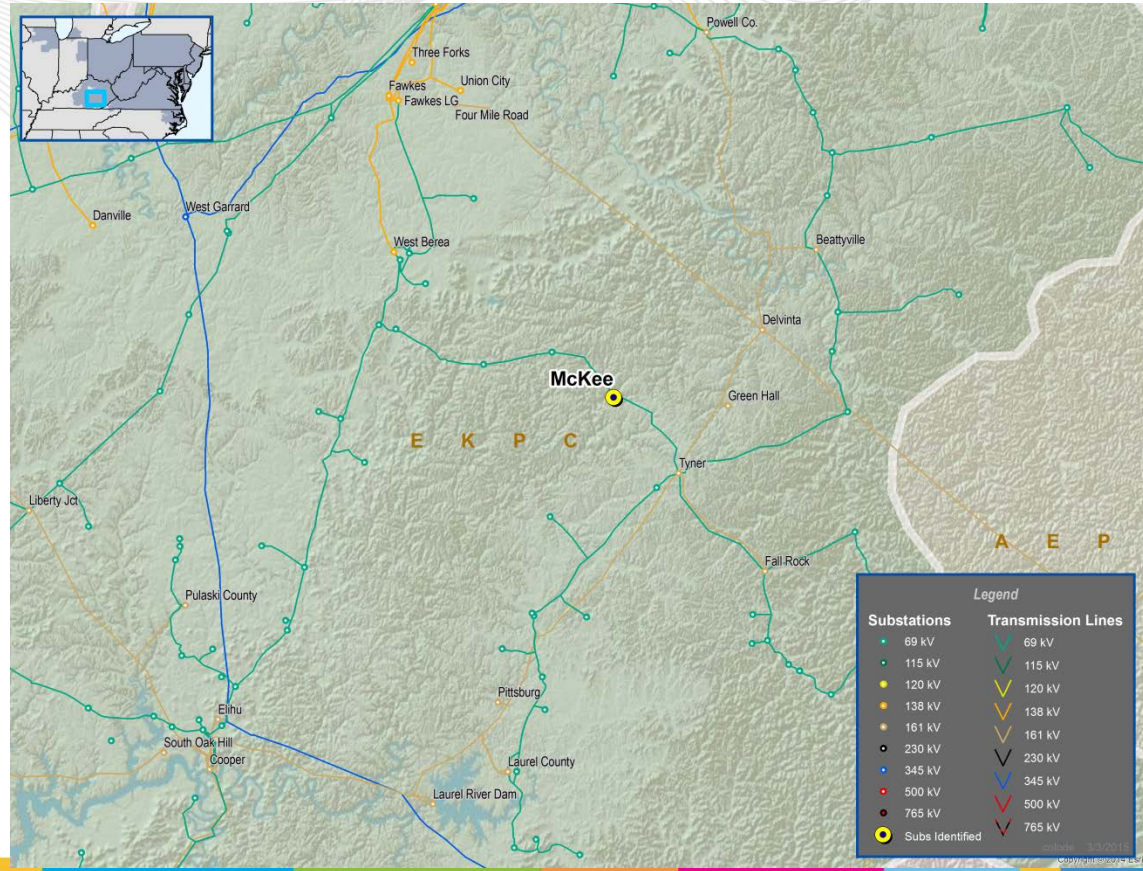
- Supplemental Project
- Re-conductor the Leon-Airport Road 69 kV line section (5.72 miles) using 556.5 MCM ACTW conductor. (S0912)
- Reason: Voltage Improvement
- Estimated Cost: \$1.15M
- Projected IS Date: 12/1/2019



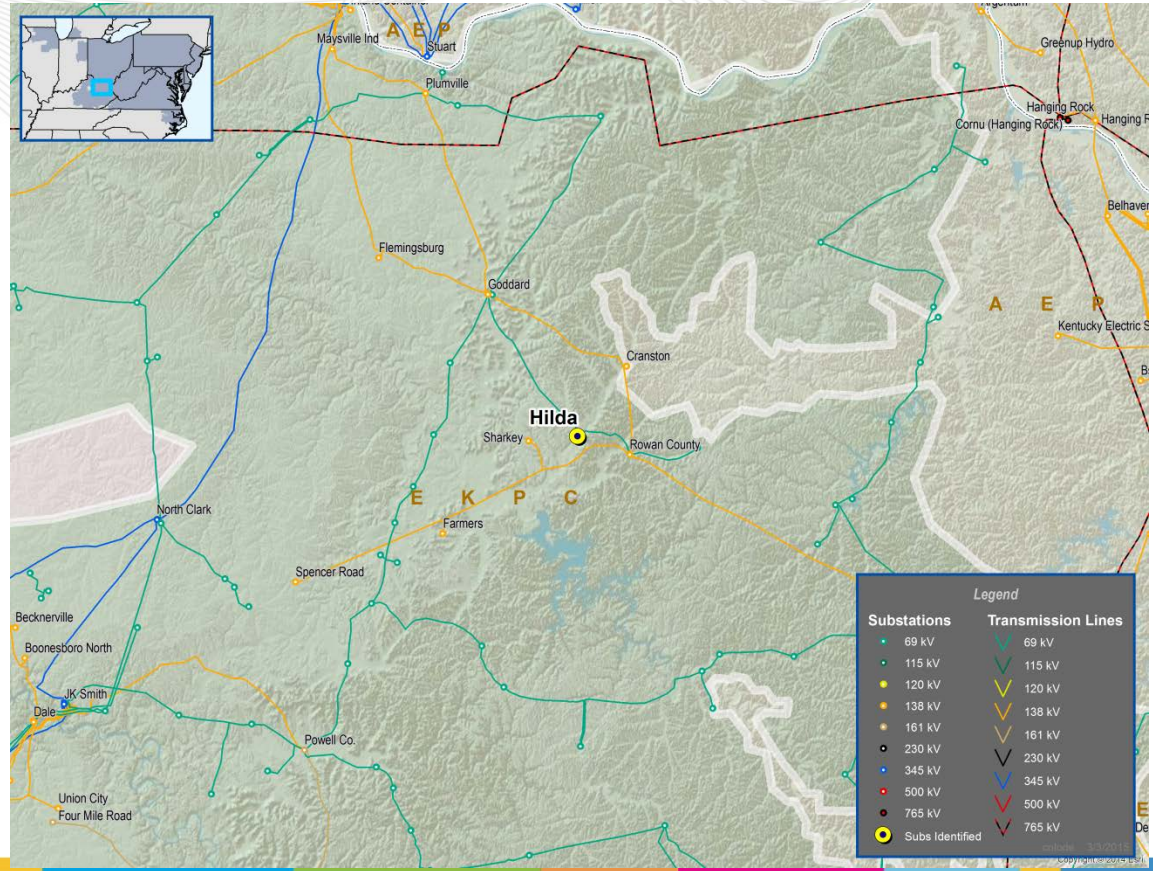
- Supplemental Project
- Increase the MOT of the Owens Illinois Bluegrass Parkway Tap 69 KV line section to 212°F. (S0913)
- Reason: Reliability Improvement
- Estimated Cost: \$0.08M
- Projected IS Date: 6/1/2016



- Supplemental Project
- Retire the Mckee 69KV10.7 MVAR capacitor bank. (S0915)
- Reason: Construction Constraint
- Estimated Cost: \$0.03M
- Projected IS Date: 12/1/2015



- Supplemental Project
- Retire the Hilda 69kV 18.37 MVAR capacitor bank and move to Big Woods 69kV. (S0916)
- Reason: Reliability Improvement
- Estimated Cost: \$0.35M
- Projected IS Date: 12/1/2016



Questions?

Email: [RTEP@pjm.com](mailto:RTEP@pjm.com)

## Revision History:

- 3/9/2015: Add reason for the supplemental projects