



SRRTEP - Western Committee ComEd Supplemental Projects

November 18, 2022

Needs

Stakeholders must submit any comments within 10 days of this meeting in order to provide time necessary to consider these comments prior to the next phase of the M-3 process

Need Number: ComEd-2022-006

Process Stage: Need Meeting 11/18/2022

Project Driver:

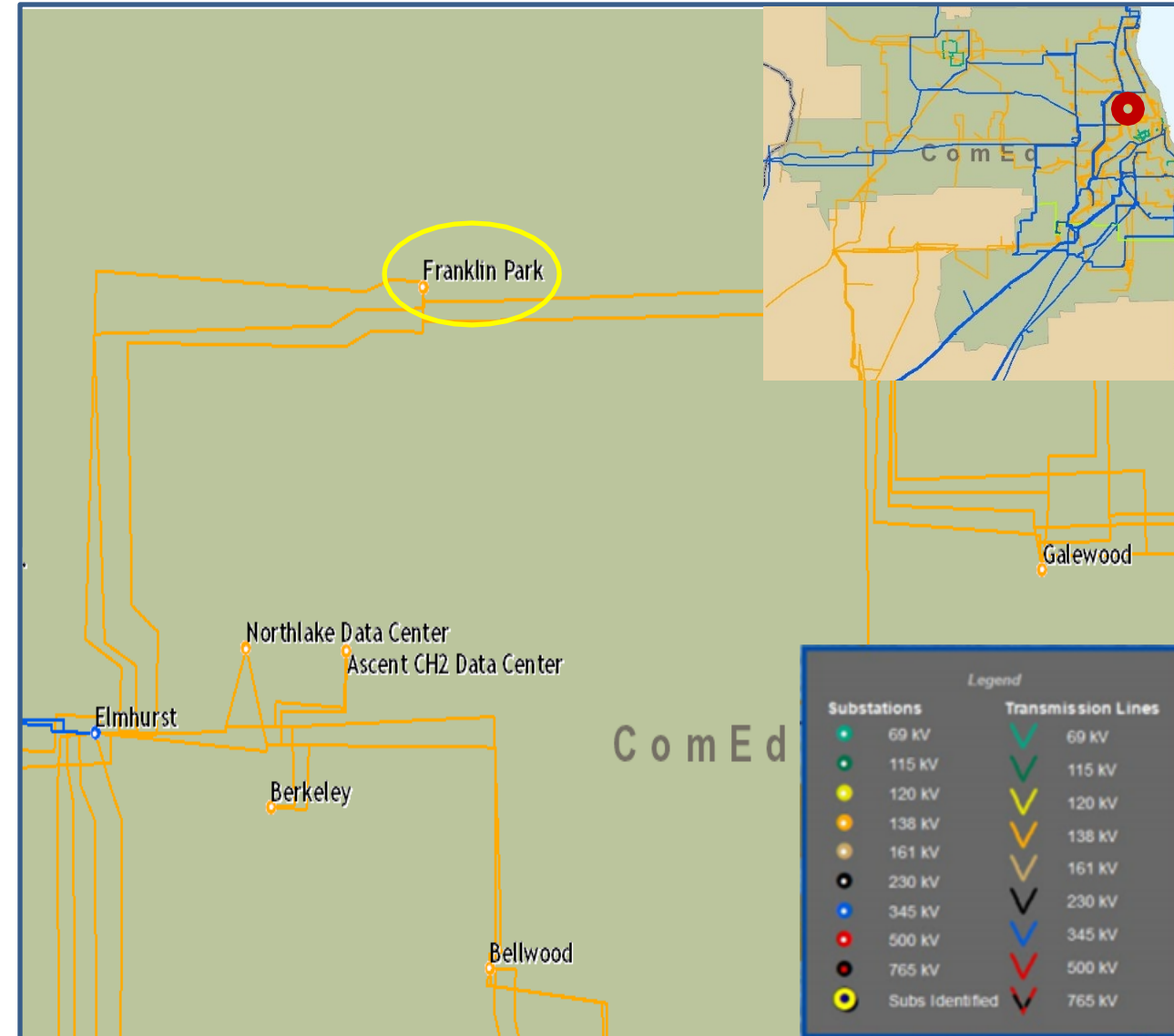
Operational Flexibility and Efficiency

Specific Assumption Reference:

- Enhancing system functionality, flexibility, visibility, or operability

Problem Statement:

There are three 138 kV lines from Elmhurst to Franklin Park. Two of the lines share a ring bus circuit breaker at Franklin Park resulting in the loss of two of the three lines for a stuck breaker contingency.



Need Number: ComEd-2022-007

Process Stage: Need Meeting 11/18/2022

Project Driver:

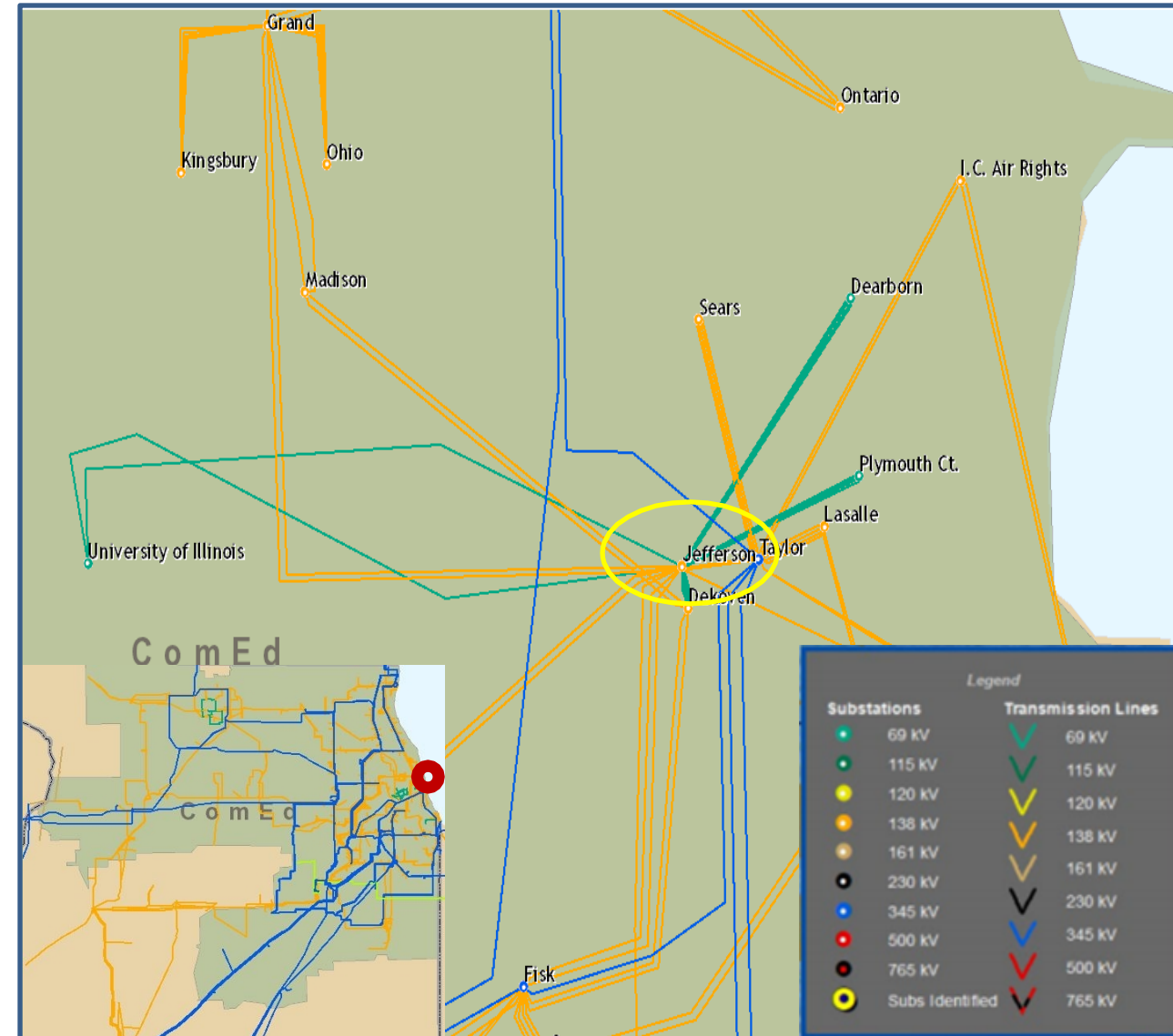
Customer Service

Specific Assumption Reference:

- Transmission System configuration changes due to new or expansion of existing distribution substations

Problem Statement:

ComEd Distribution has a need for an additional 138-12 kV transformer at Jefferson substation.



Solutions

Stakeholders must submit any comments within 10 days of this meeting in order to provide time necessary to consider these comments prior to the next phase of the M-3 process

Need Number: ComEd-2022-001

Process Stage: Solutions Meeting 11/18/2022

Previously Presented: Need Meeting 2/18/2022

Project Driver:

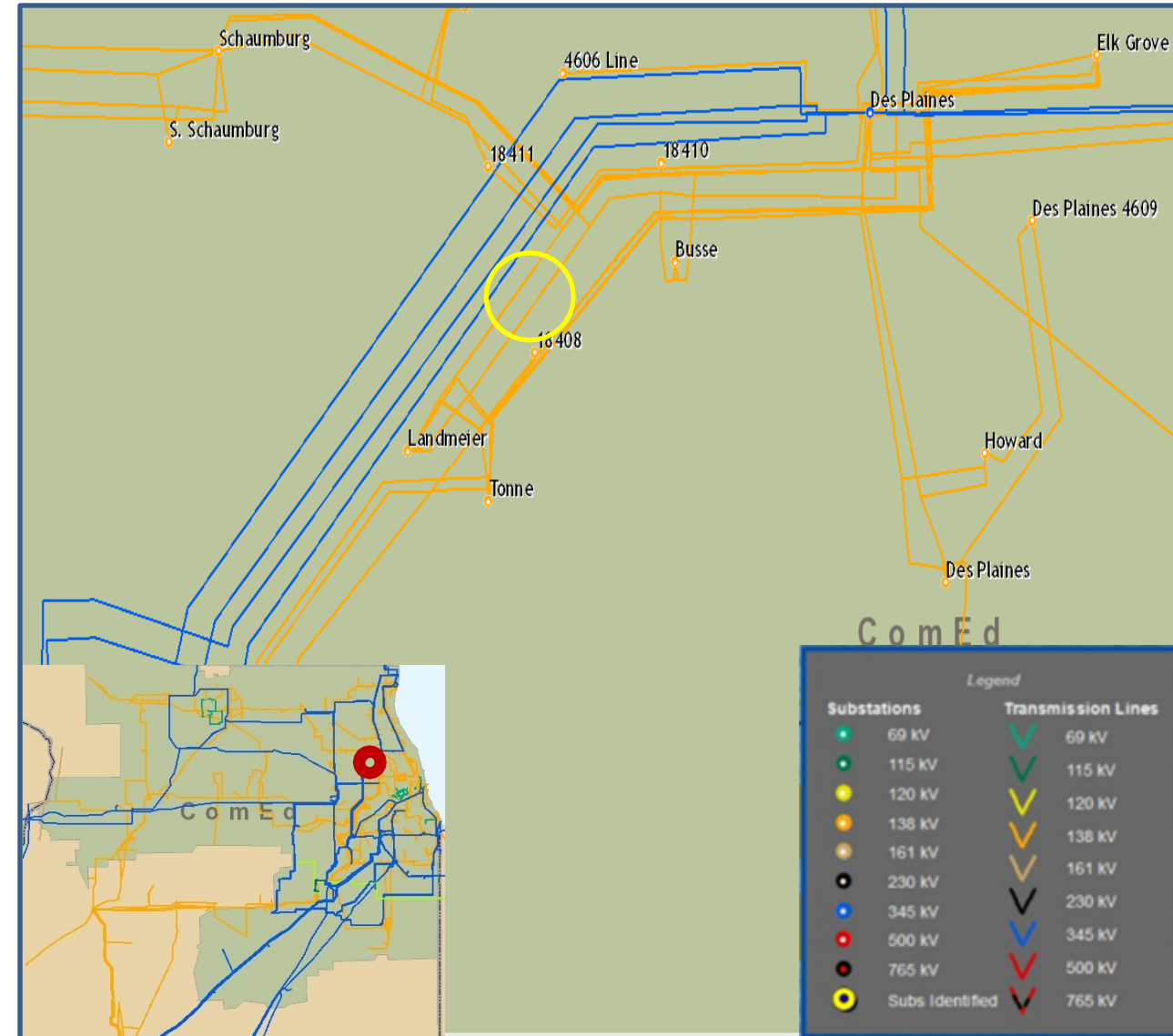
Customer Service

Specific Assumption Reference:

- New transmission customer interconnections or modification to an existing customer

Problem Statement:

New customer is looking for transmission service in Elk Grove. Initial loading is expected to be 24 MW in June 2023 with an ultimate load of 96 MW by the end of 2027.



Need Number: ComEd-2022-001

Process Stage: Solutions Meeting 11/18/2022

Proposed Solution:

Tap 138 kV lines from Elk Grove to Tonne and extend 0.12 miles to a new customer substation.

Estimated Transmission Cost: \$ 0

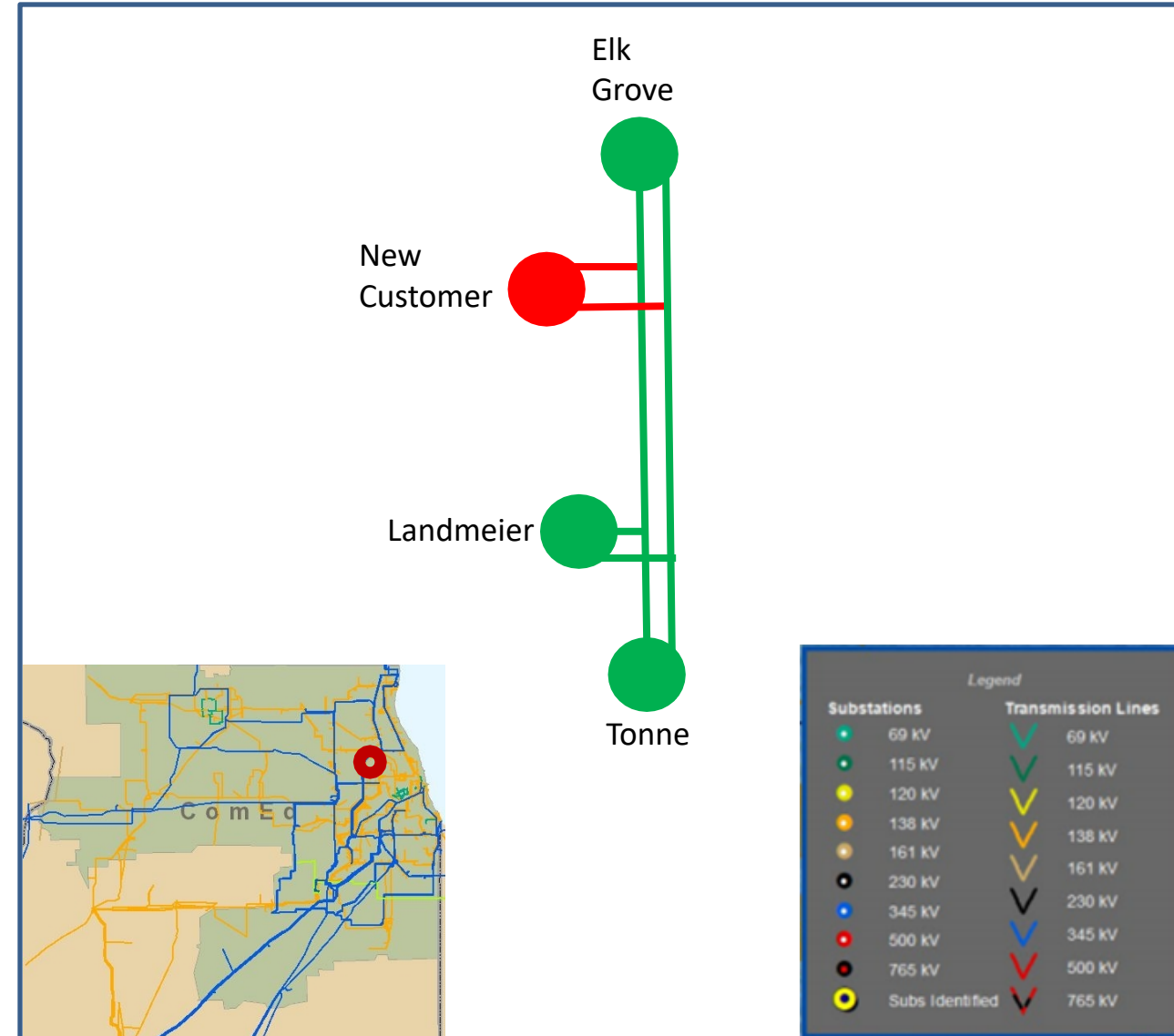
Alternatives Considered:

A networked connection with lines in and out of the new station was considered but rejected due to insufficient right-of-way availability.

Projected In-Service: 12/31/2024

Project Status: Conceptual

Model: RTEP 2027



Appendix

High Level M-3 Meeting Schedule

Assumptions	Activity	Timing
	Posting of TO Assumptions Meeting information	20 days before Assumptions Meeting
	Stakeholder comments	10 days after Assumptions Meeting
Needs	Activity	Timing
	TOs and Stakeholders Post Needs Meeting slides	10 days before Needs Meeting
	Stakeholder comments	10 days after Needs Meeting
Solutions	Activity	Timing
	TOs and Stakeholders Post Solutions Meeting slides	10 days before Solutions Meeting
	Stakeholder comments	10 days after Solutions Meeting
Submission of Supplemental Projects & Local Plan	Activity	Timing
	Do No Harm (DNH) analysis for selected solution	Prior to posting selected solution
	Post selected solution(s)	Following completion of DNH analysis
	Stakeholder comments	10 days prior to Local Plan Submission for integration into RTEP
	Local Plan submitted to PJM for integration into RTEP	Following review and consideration of comments received after posting of selected solutions

Revision History

11/8/2022 – V1 – Original version posted to pjm.com