



Dominion Supplemental Projects

Transmission Expansion Advisory
Committee

February 7, 2019

Needs

Stakeholders must submit any comments within 10 days of this meeting in order to provide time necessary to consider these comments prior to the next phase of the M-3 process



Dominion Transmission Zone: Supplemental Customer Load Request

Need Number: DOM-2019-0002

Meeting Date: 2/07/2019

Process Stage: NEED

Supplemental Project Driver: Customer Service

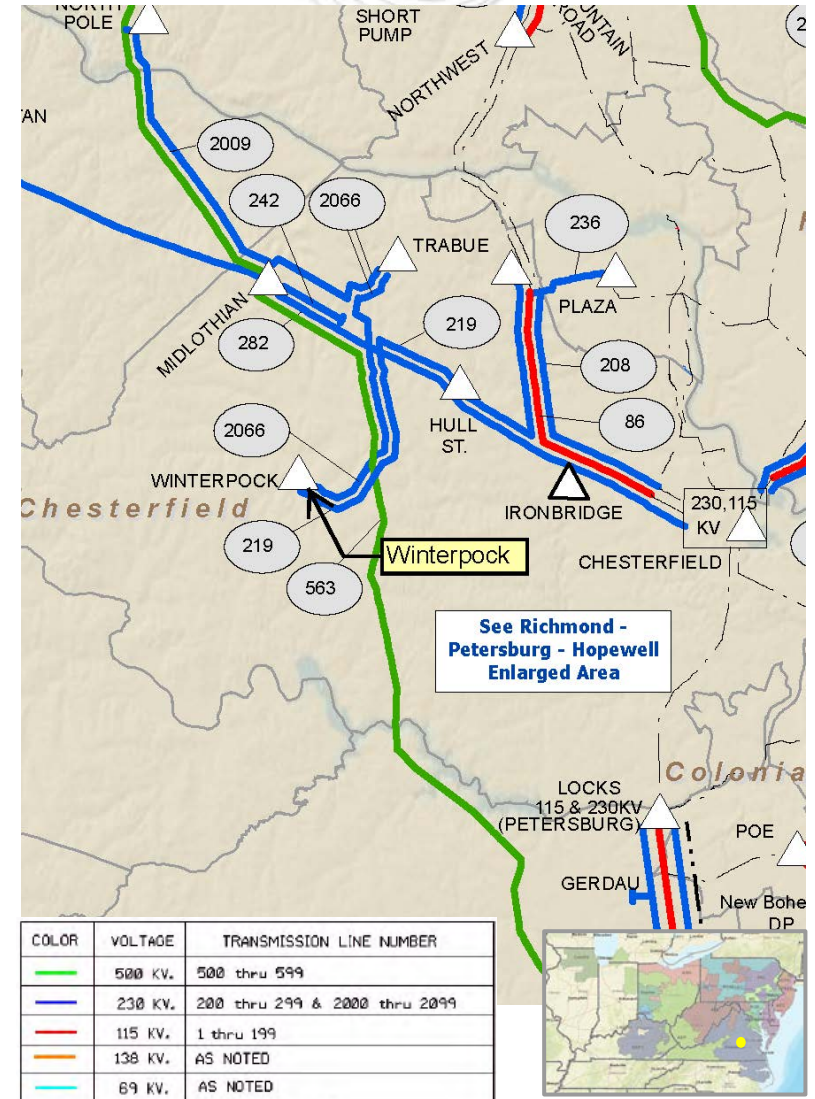
Problem Statement:

DEV Distribution has submitted a DP request to add a 3rd distribution transformer at Winterpock Substation. The station load growth has caused a transformer contingency to exceed the capacity of field switching plus a mobile transformer. Requested in-service date is 09/15/2020.

Initial In-Service Load	Projected 2024 Load
Winter: 179 MW	Winter: 206 MW

Specific Assumption References:

Customer load request will be evaluated per Dominion’s Facility Interconnection Requirements Document & Dominion’s Transmission Planning Criteria





Dominion Transmission Zone: Supplemental Customer Load Request

Need Number: DOM-2019-0003

Meeting Date: 2/07/2019

Process Stage: NEED

Supplemental Project Driver: Customer Service

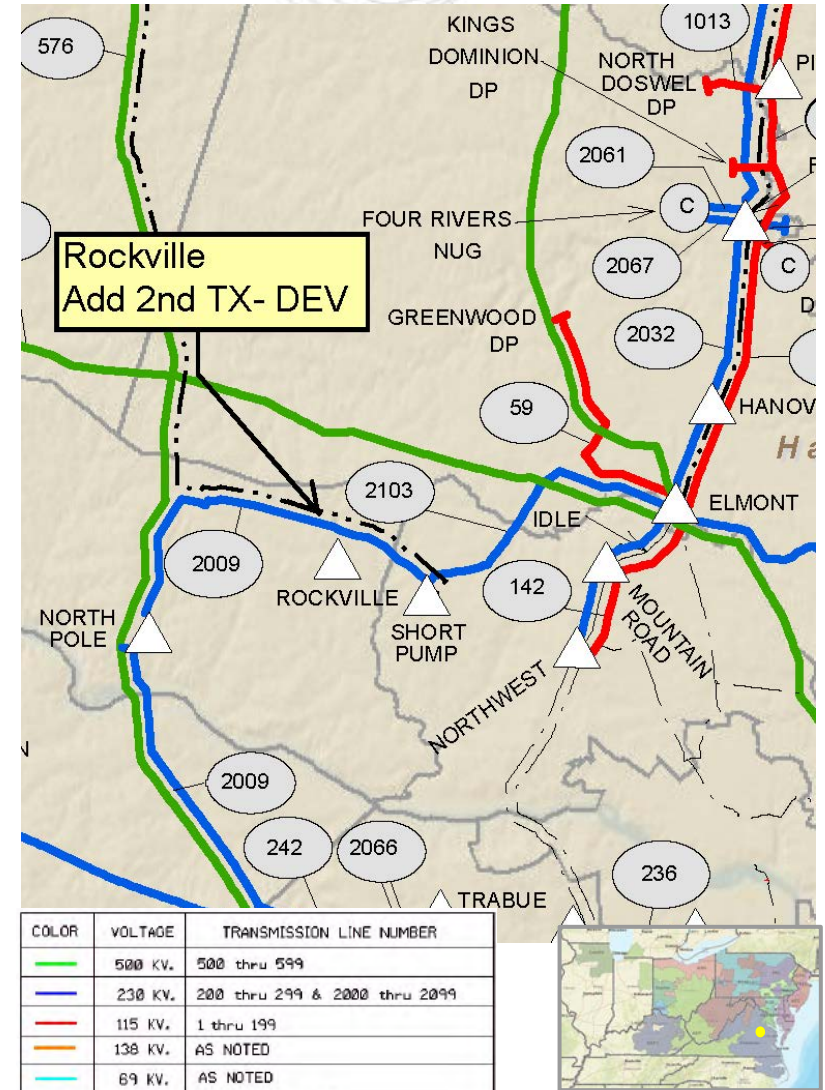
Problem Statement:

DEV Distribution has submitted a DP request to add a second distribution transformer at Rockville Substation in Goochland County. This transformer will support residential and commercial load growth in the area. Requested in-service date is 06/15/2020.

Initial In-Service Load	Projected 2024 Load
Summer: 47.6 MW	Summer: 54.9 MW

Specific Assumption References:

Customer load request will be evaluated per Dominion’s Facility Interconnection Requirements Document & Dominion’s Transmission Planning Criteria



Need Number: DOM-2019-0004

Meeting Date: 02/07/2019

Process Stage: NEED

Supplemental Project Driver: Customer Service

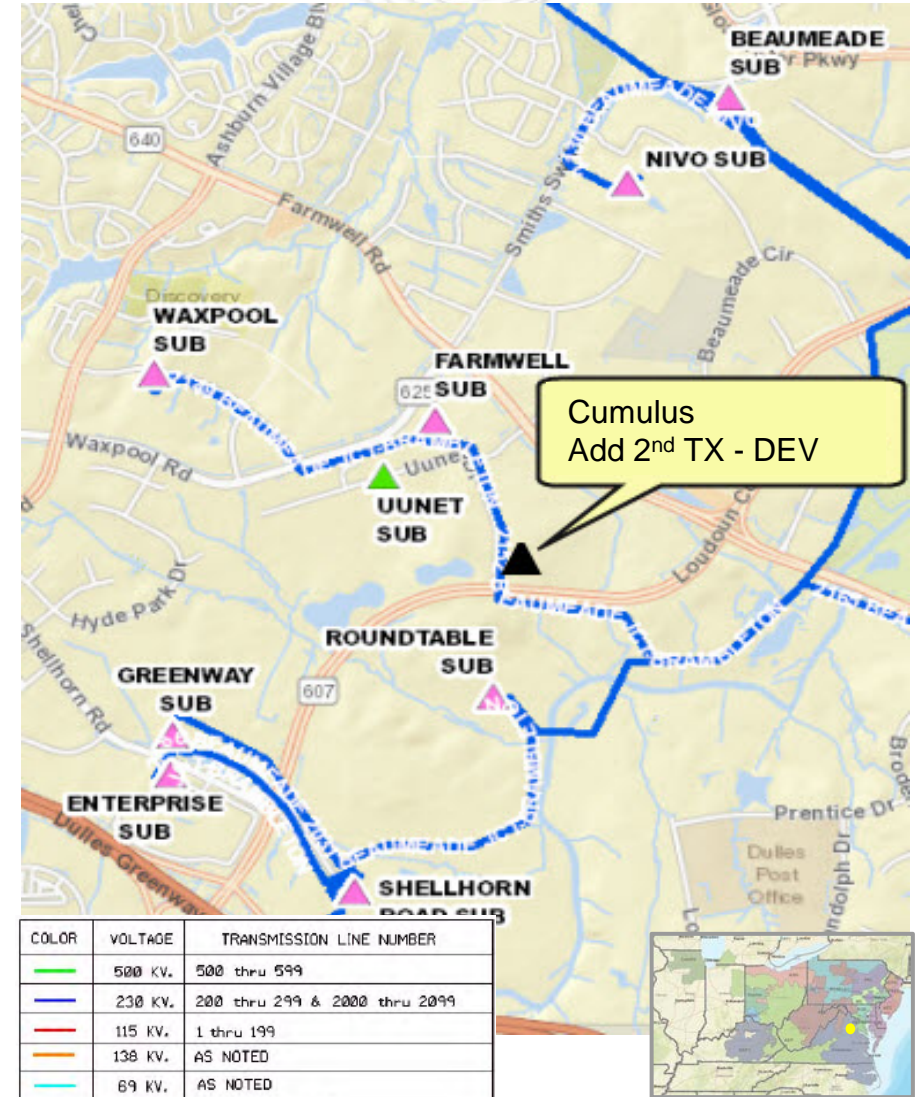
Problem Statement:

DEV Distribution has submitted a DP Request to add a 2nd, 84 MVA distribution transformer at Cumulus Substation in Loudoun County. The new transformer is being driven by projections that load on the initial Cumulus transformer will exceed mobile transformer capability in 2020. Requested in-service date is 10/15/2020.

Initial In-Service Load	Projected 2024 Load
Summer: 36 MW	Summer: 155.7 MW

Specific Assumption References:

Customer load request will be evaluated per Dominion’s Facility Interconnection Requirements Document & Dominion’s Transmission Planning Criteria



Need Number: DOM-2019-0005

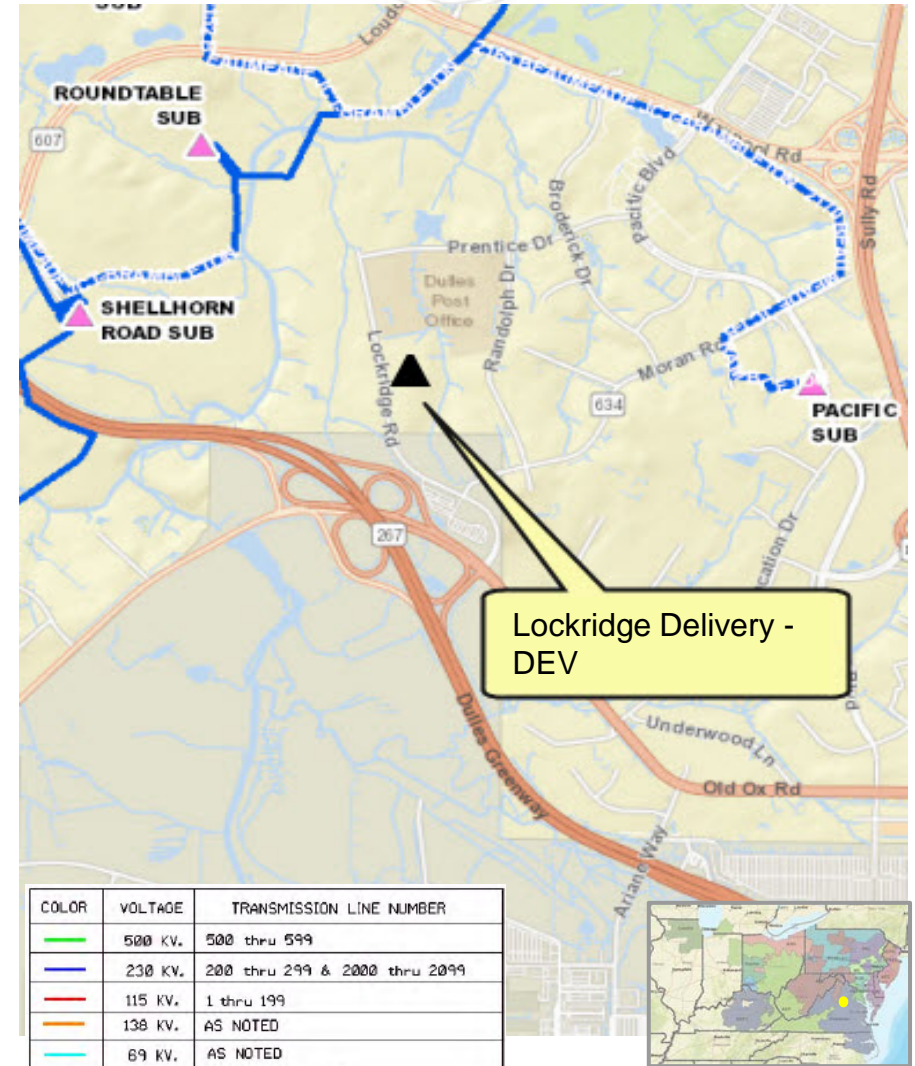
Meeting Date: 02/07/2019

Process Stage: NEED

Supplemental Project Driver: Customer Service

Problem Statement:

DEV Distribution has submitted a DP Request for a new substation (Lockridge) to support a new datacenter campus in Loudoun County with a total load in excess of 100 MW. The new station will also support existing data center load in the immediate area. Requested in-service date is 09/30/2021.



Initial In-Service Load	Projected 2024 Load
Summer: 169.5 MW	Summer: 224.7 MW

Specific Assumption References:

Customer load request will be evaluated per Dominion’s Facility Interconnection Requirements Document & Dominion’s Transmission Planning Criteria.

Need Number: DOM-2019-0006

Meeting Date: 02/07/2019

Process Stage: NEED

Supplemental Project Driver: Customer Service

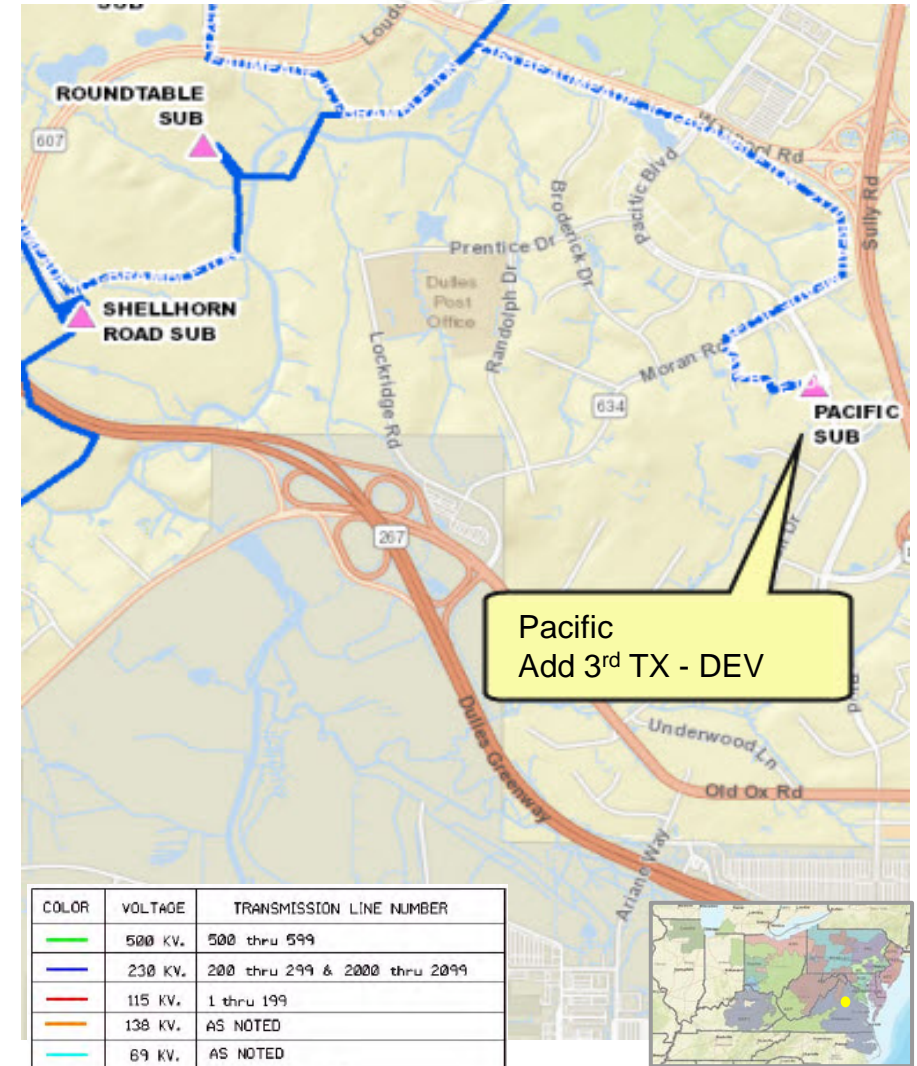
Problem Statement:

DEV Distribution has submitted a DP Request to add a 3rd, 84 MVA distribution transformer at Pacific Substation in Loudoun County. The new transformer is being driven by continued load growth in the area and contingency loading for loss of one of the existing two transformers. Requested in-service date is 04/01/2020.

Initial In-Service Load	Projected 2024 Load
Summer: 146.8 MW	Summer: 193.5 MW

Specific Assumption References:

Customer load request will be evaluated per Dominion’s Facility Interconnection Requirements Document & Dominion’s Transmission Planning Criteria.



Need Number: DOM-2019-0007

Meeting Date: 02/07/2019

Process Stage: NEED

Supplemental Project Driver: Customer Service

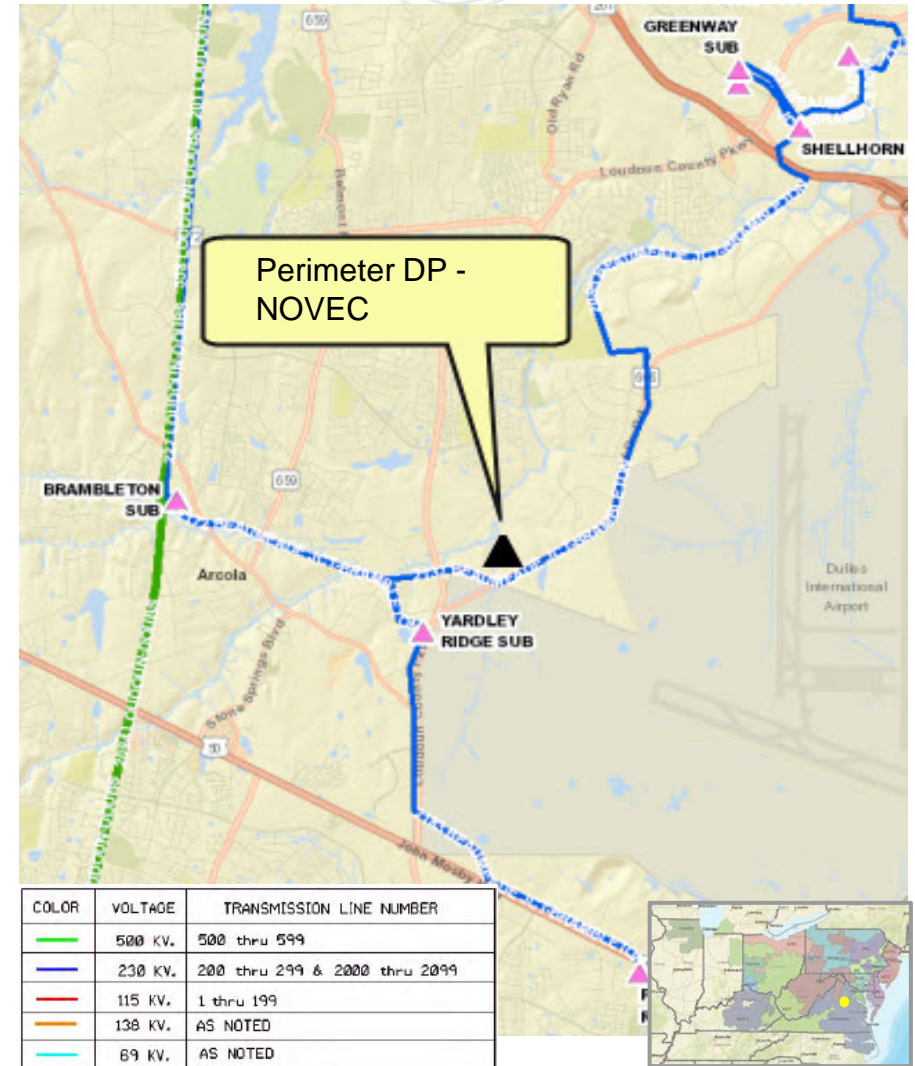
Problem Statement:

NOVEC has submitted a DP Request for a new substation (Perimeter) to support a new datacenter campus in Loudoun County with a total load less than 100 MW; however NOVEC is developing a proposal for a second data center adjacent to Perimeter that will drive the projected load above 100 MW. Requested in-service date is 12/01/2020.

Initial In-Service Load	Projected 2024 Load
Summer: 10.0 MW	Summer: 52.9 MW

Specific Assumption References:

Customer load request will be evaluated per Dominion’s Facility Interconnection Requirements Document & Dominion’s Transmission Planning Criteria.



Need Number: DOM-2019-0008

Meeting Date: 02/07/2019

Process Stage: NEED

Supplemental Project Driver: Customer Service

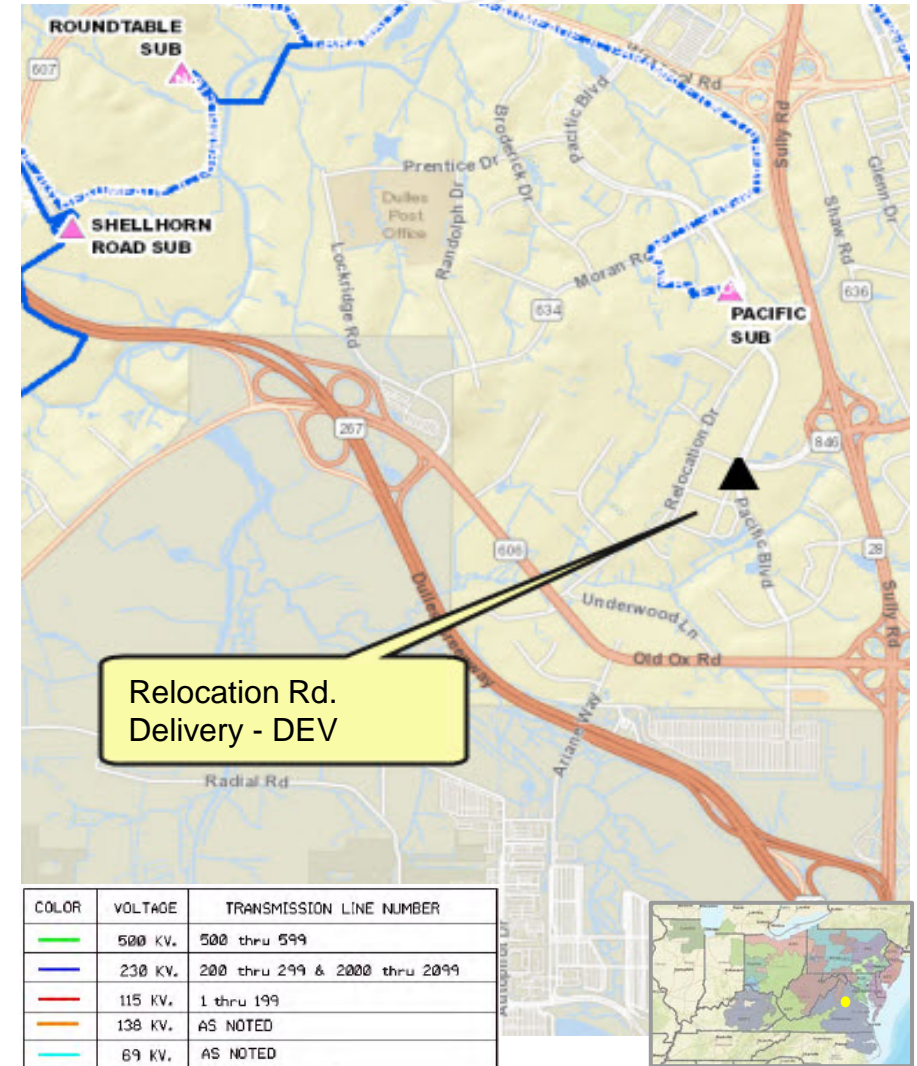
Problem Statement:

DEV Distribution has submitted a DP Request for a new substation (Relocation Road) to support a new datacenter campus in Loudoun County with a total load in excess of 100 MW. The new station will also support existing data center load in the immediate area. Requested in-service date is 11/15/2021.

Initial In-Service Load	Projected 2024 Load
Summer: 169.5 MW	Summer: 224.7 MW

Specific Assumption References:

Customer load request will be evaluated per Dominion’s Facility Interconnection Requirements Document & Dominion’s Transmission Planning Criteria.



Solutions

Stakeholders must submit any comments within 10 days of this meeting in order to provide time necessary to consider these comments prior to the next phase of the M-3 process



Dominion Transmission Zone: Supplemental Customer Load Request

Need Number: DOM-2018-0023

Meeting Date: 02/07/2019

Process Stage: SOLUTIONS

Supplemental Project Driver: Customer Service

Problem Statement:

DEV Distribution has identified the need to install a second distribution transformer at Greenwich substation. The station load growth has caused a transformer contingency to exceed the capacity of field switching plus a mobile transformer. Requested in-service date is 10/15/2019.

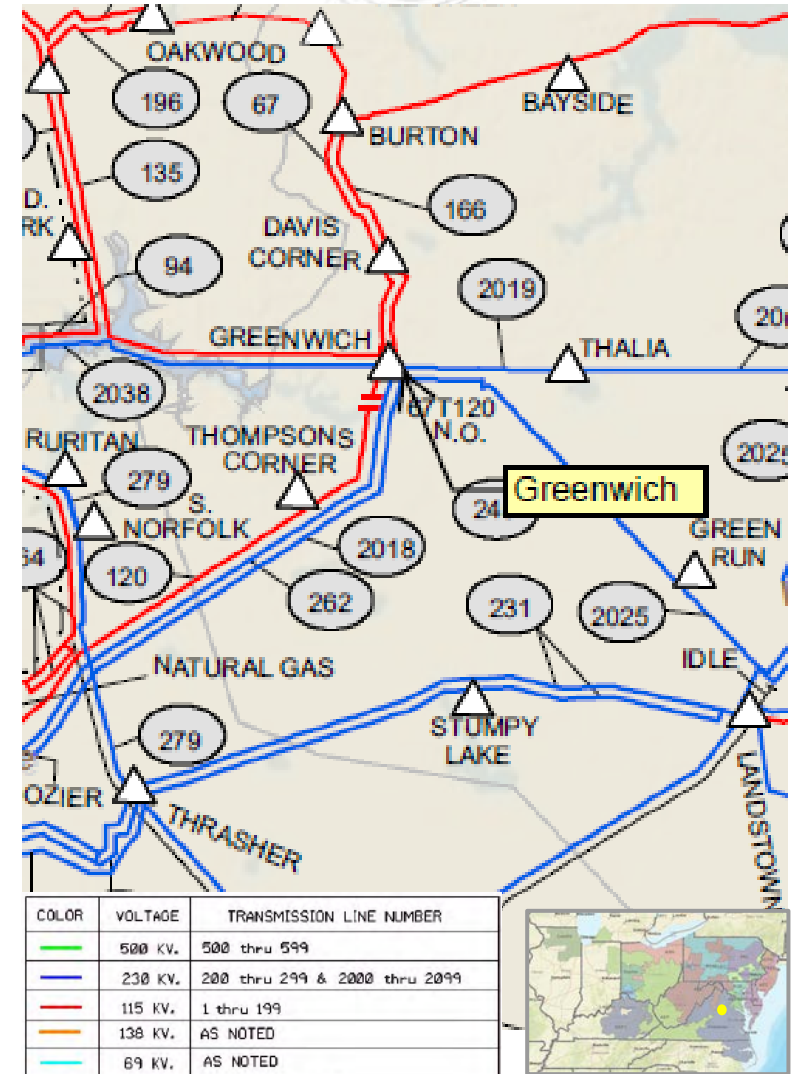
Projected 2023 Load

Summer: 77 MVA

Winter: 77 MVA

Specific Assumption References:

Customer load request will be evaluated per Dominion’s Facility Interconnection Requirements Document & Dominion’s Transmission Planning Criteria.





Dominion Transmission Zone: Supplemental Customer Load Request

Need Number: DOM-2018-0023

Proposed Solution:

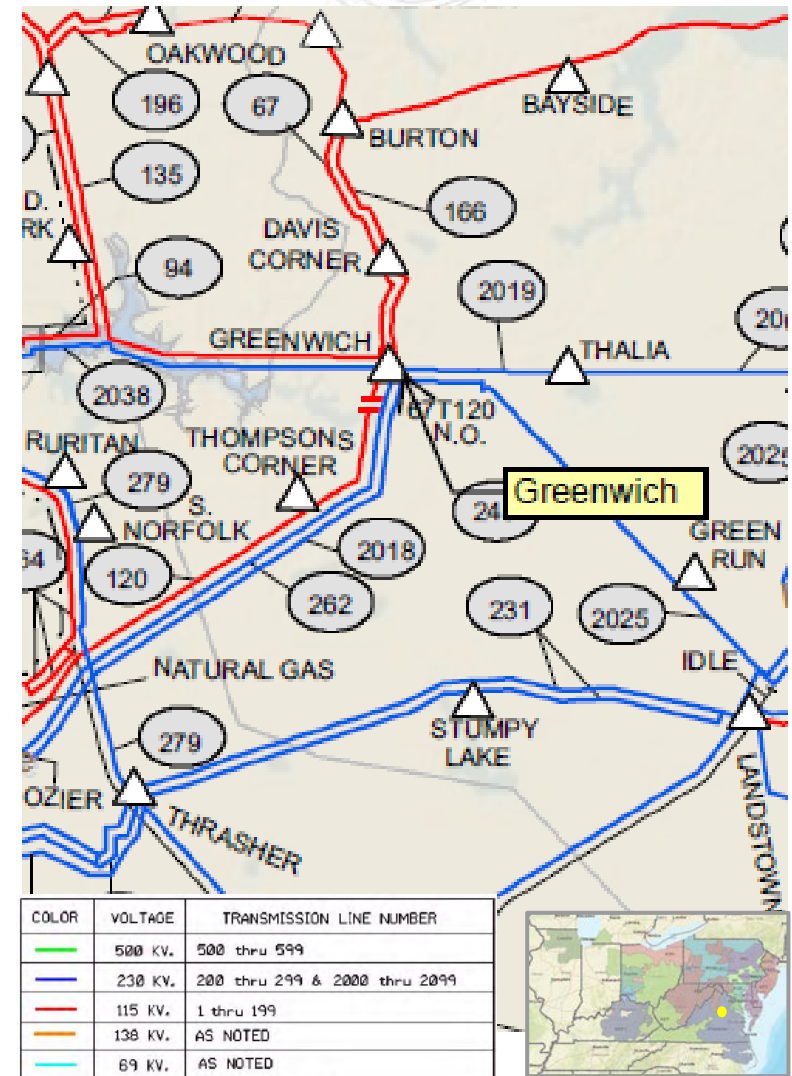
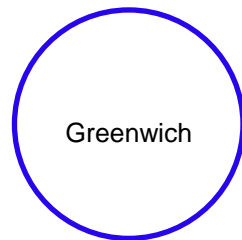
Install a 230kV circuit switcher, high side switch and perform necessary transmission work for the new transformer.

TO Alternative: No feasible alternatives.

Estimated Project Cost: \$1.4 M

Project IS Date: 10/15/2019

Project Status: Conceptual



Appendix



High level M-3 Meeting Schedule

Assumptions

Activity	Timing
Posting of TO Assumptions Meeting information	20 days before Assumptions Meeting
Stakeholder comments	10 days after Assumptions Meeting

Needs

Activity	Timing
TOs and Stakeholders Post Needs Meeting slides	10 days before Needs Meeting
Stakeholder comments	10 days after Needs Meeting

Solutions

Activity	Timing
TOs and Stakeholders Post Solutions Meeting slides	10 days before Solutions Meeting
Stakeholder comments	10 days after Solutions Meeting

Submission of Supplemental Projects & Local Plan

Activity	Timing
Do No Harm (DNH) analysis for selected solution	Prior to posting selected solution
Post selected solution(s)	Following completion of DNH analysis
Stakeholder comments	10 days prior to Local Plan Submission for integration into RTEP
Local Plan submitted to PJM for integration into RTEP	Following review and consideration of comments received after posting of selected solutions

V1 – 01/28/2019 – Original Slides Posted

V2 – 02/05/2019 – Added note to Need and Solution slides. Added appendix.