



Interregional Transmission Coordination

Jonathan Kern
Scenario Analysis & Special Studies

Special TEAC – Order 1920
August 27, 2024

- FO1920 aligns the existing FO1000 interregional transmission planning coordination procedures with FO1920's requirement for transmission providers to conduct long-term regional transmission planning as part of their regional transmission planning processes.
- While both FO1000 and FO1920 differentiate between regional and interregional transmission facilities, the intent is that these two types of facilities will be evaluated using a similar framework.
 - **Regional transmission facility** is a transmission facility located entirely in one transmission planning region
 - **Interregional transmission facility** is a transmission facility that is located in two or more transmission planning regions



Interregional Planning Comparison Requirements of FO1000 and FO1920

	<u>Requirements</u>	<u>Order 1000</u>	<u>Order 1920</u>
1	Establish a minimum long-term planning horizon for the identification of long-term needs	No	Yes
2	Discuss right-sizing or expanding proposed regional transmission facilities in consideration of the transmission needs of both regions	No	No
3	Identify and jointly evaluate interregional transmission facilities that may be more efficient or cost-effective than proposed regional transmission facilities	Yes	Yes
4	Apply a similar evaluation framework for regional and interregional transmission facilities*	Yes	Yes*
5	Share information with respect to needs and solutions**	Yes	Yes**
6	Allow an entity to propose an interregional transmission facility in the regional transmission planning process as a potential solution	Yes	Yes
7	Adopt holistic interregional transmission planning and cost allocation	No	No
8	Use interregional transfer capability as a core factor that drives transmission needs	No	No
9	Consider the benefits associated with any increase in interregional transfer capability provided by a transmission facility during extreme weather conditions	No	Yes
10	Adopt a common system model and planning assumptions, common long-term scenarios, and consistent data inputs	No	No

*While this is not directly stated, it is implied by requirement 3

** While both Order 1000 and Order 1920 require interregional coordination, Order 1920 provides a few specific posting requirements related interregional transmission coordination procedures for long-term needs and solutions that do not appear in Order 1000

Presenter:

Jonathan Kern

Jonathan.Kern@pjm.com

Interregional Transmission Coordination



Member Hotline

(610) 666-8980

(866) 400-8980

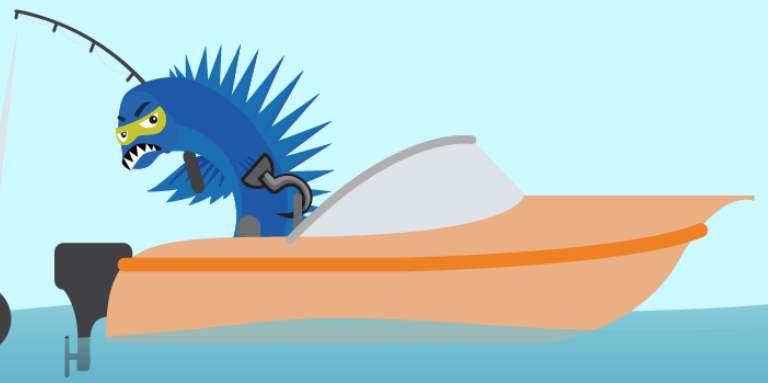
custsvc@pjm.com

**PROTECT THE
POWER GRID**

**THINK BEFORE
YOU CLICK!**



**BE ALERT TO
MALICIOUS PHISHING
EMAILS**



**Report suspicious email activity to PJM.
Call (610) 666-2244 or email it_ops_ctr_shift@pjm.com**