



Load Response Activity Report 2011

James McAnany
PJM Demand Side Response
February 9, 2012



Delivery Year 2011-2012 Active Participants in PJM Load Response Program: as of 1/9/2012 (page 1 of 2)

State	Zone	EDC	Economic Program		Emergency Energy Only		Emergency ILR		Emergency DR		Emergency Total MW
			Sites	MW	Sites	MW	Sites	MW	Sites	MW	
DC	PEPCO	PEPCO	4	8.6			169	74.3	8	15.8	90.0
DE	DPL	DEMEC					23	9.1	1	0.3	9.4
DE	DPL	DOVDE					7	8.5			8.5
DE	DPL	DPL	32	56.0			134	104.6	7	5.9	110.5
DE	DPL	ODEC	2	0.3			5	2.9	1	0.2	3.0
IL	COMED	BATAV					1	0.5			0.5
IL	COMED	COMED	741	286.7			2,115	1,581.4	63	36.8	1,618.2
IL	COMED	IMEAA1					2	46.3			46.3
IN	AEP	AEPSCT					1	0.0	24	216.9	216.9
IN	AEP	HEREC					1	14.4			14.4
IN	AEP	WVSDI					1	23.1			23.1
KY	DEOK	DEK							29	40.9	40.9
MD	APS	AETSAP	7	27.5			137	90.6	29	4.7	95.3
MD	APS	AETSHG					4	2.3	2	0.7	3.1
MD	BGE	BC	65	529.4			661	449.7	129	521.5	971.2
MD	DPL	DPL	5	3.1			141	52.3	24	23.1	75.3
MD	DPL	EASTON					1	1.4	2	0.9	2.3
MD	DPL	ODEC	1	0.5			16	7.9	5	1.3	9.2
MD	PEPCO	PEPCO	8	1.5			390	105.4	16	76.3	181.7
MD	PEPCO	SMECO	28	5.2			61	12.6	29	28.0	40.6
MI	AEP	AEPSCT					4	9.0	2	2.1	11.0
NC	DOM	DOMEDC					5	93.8			93.8
NJ	AECO	AE	40	20.0			217	84.3	1	0.1	84.4
NJ	AECO	VMEU	4	2.3			11	5.4	3	2.5	8.0
NJ	JCPL	AECI					1	0.3			0.3
NJ	JCPL	JCBGS	28	92.5			407	204.5	10	5.6	210.1
NJ	PSEG	PSEG	107	59.9			958	385.7	31	28.5	414.2
NJ	RECO	RECO					14	6.4			6.4
NY	PENELEC	PaElec					1	0.4			0.4
OH	AEP	AEPCCCL					9	21.1			21.1
OH	AEP	AEPSCT	40	11.8			636	626.7	103	227.6	854.3
OH	AEP	AMPO					53	154.4	5	6.2	160.7
OH	AEP	BUCK					4	38.7			38.7
OH	ATSI	AMPO							32	299.5	299.5
OH	ATSI	CPP							16	79.3	79.3
OH	ATSI	OEEDC	1	3.0					530	811.2	811.2
OH	DAY	AMPO					17	44.4			44.4
OH	DAY	BUCK					1	3.4			3.4
OH	DAY	DAYEDC	14	7.2			239	171.0	2	0.5	171.5



Delivery Year 2011-2012 Active Participants in PJM Load Response Program: as of 1/9/2012 (page 2 of 2)

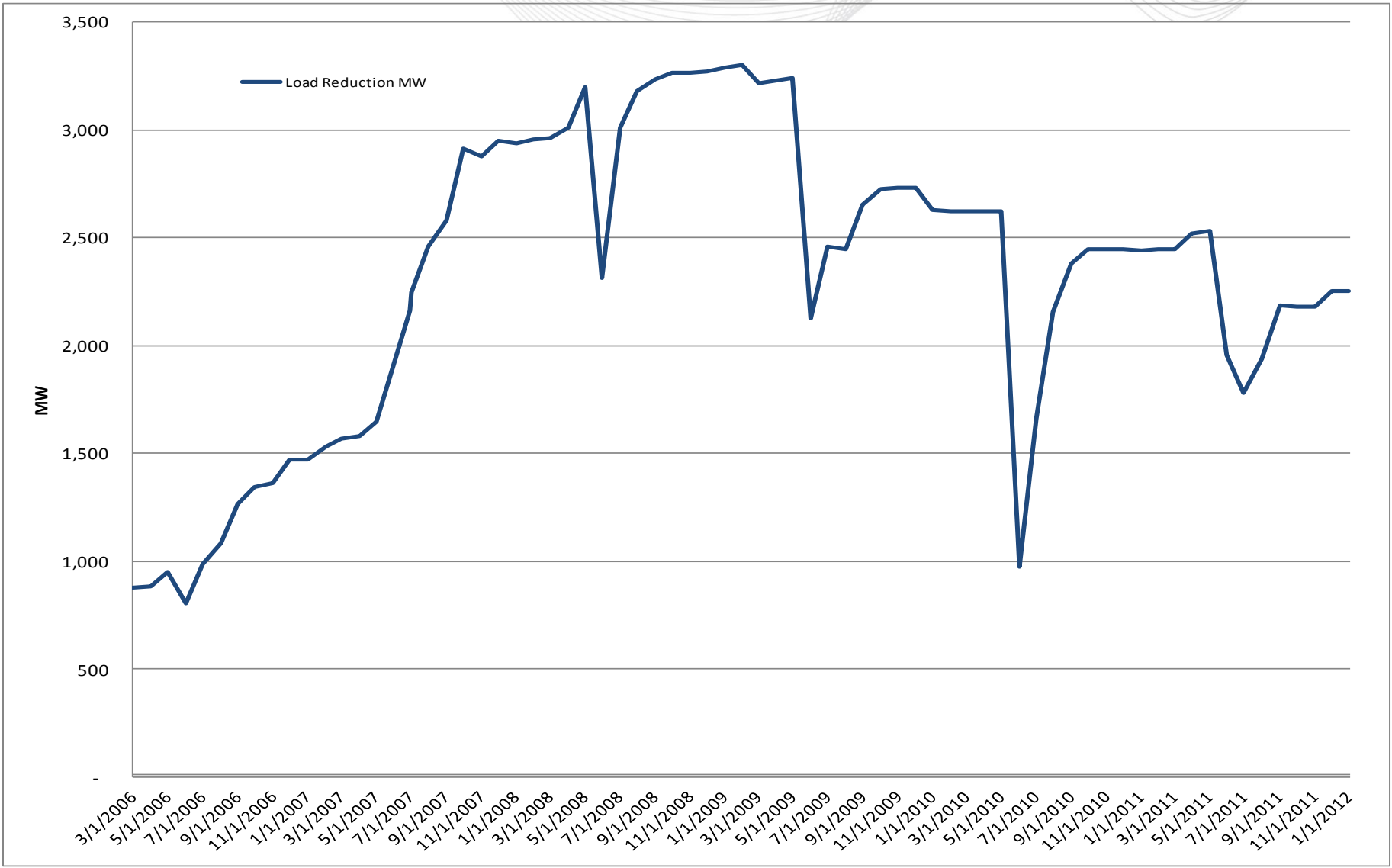
State	Zone	EDC	Economic Program		Emergency Energy Only		Emergency ILR		Emergency DR		Emergency Total MW
			Sites	MW	Sites	MW	Sites	MW	Sites	MW	
OH	DEOK	AMPO							1	28.0	28.0
OH	DEOK	DEOHIO							193	229.5	229.5
PA	APS	AECI					3	2.7			2.7
PA	APS	AETSAP	207	57.3			690	479.6	10	2.0	481.6
PA	APS	CHBDTE					4	2.2			2.2
PA	ATSI	PAPWR	10	75.9					31	48.5	48.5
PA	DUQ	DLCO	24	54.5					309	211.4	211.4
PA	METED	AECI					1	1.6			1.6
PA	METED	MetEd	90	80.9			368	241.7	13	5.1	246.8
PA	PECO	PE	404	182.1			1,301	572.8	34	13.1	585.9
PA	PENELEC	AECI					12	17.0	3	0.2	17.1
PA	PENELEC	PaElec	157	83.6			548	357.6	17	18.0	375.7
PA	PENELEC	WELLSB					1	0.1			0.1
PA	PPL	AMPO					8	2.6	4	0.2	2.8
PA	PPL	CTZECL					5	4.2			4.2
PA	PPL	PPL	294	263.0			1,263	716.4	39	11.6	728.0
PA	PPL	UGI-UI	2	1.9			18	10.7			10.7
TN	AEP	AEPSCT					2	13.0			13.0
VA	AEP	AEPSCT	6	59.1			189	279.7	32	3.3	283.0
VA	AEP	AMPO					15	25.6			25.6
VA	APS	AETSAP					1	2.2			2.2
VA	APS	AMPO					3	1.0			1.0
VA	APS	ODEC					37	44.9	8	1.5	46.4
VA	DOM	CVEC							5	3.5	3.5
VA	DOM	DOMEDC	82	78.0			849	715.8	39	31.7	747.5
VA	DOM	DOMVME					15	99.5			99.5
VA	DOM	NVEC	5	43.2			19	27.1			27.1
VA	DOM	ODEC	1	67.0			38	88.4	9	1.6	90.0
VA	DPL	ODEC					8	2.0			2.0
WV	AEP	AEPSCT	25	59.7			348	296.9	12	42.4	339.3
WV	AEP	APWVP	0	0.0			10	6.3			6.3
WV	APS	AETSAP	11	29.9			331	282.5	2	2.6	285.1
Total			2,445	2,252	0	0	12,534	8,731	1,865	3,091	11,821

Note:

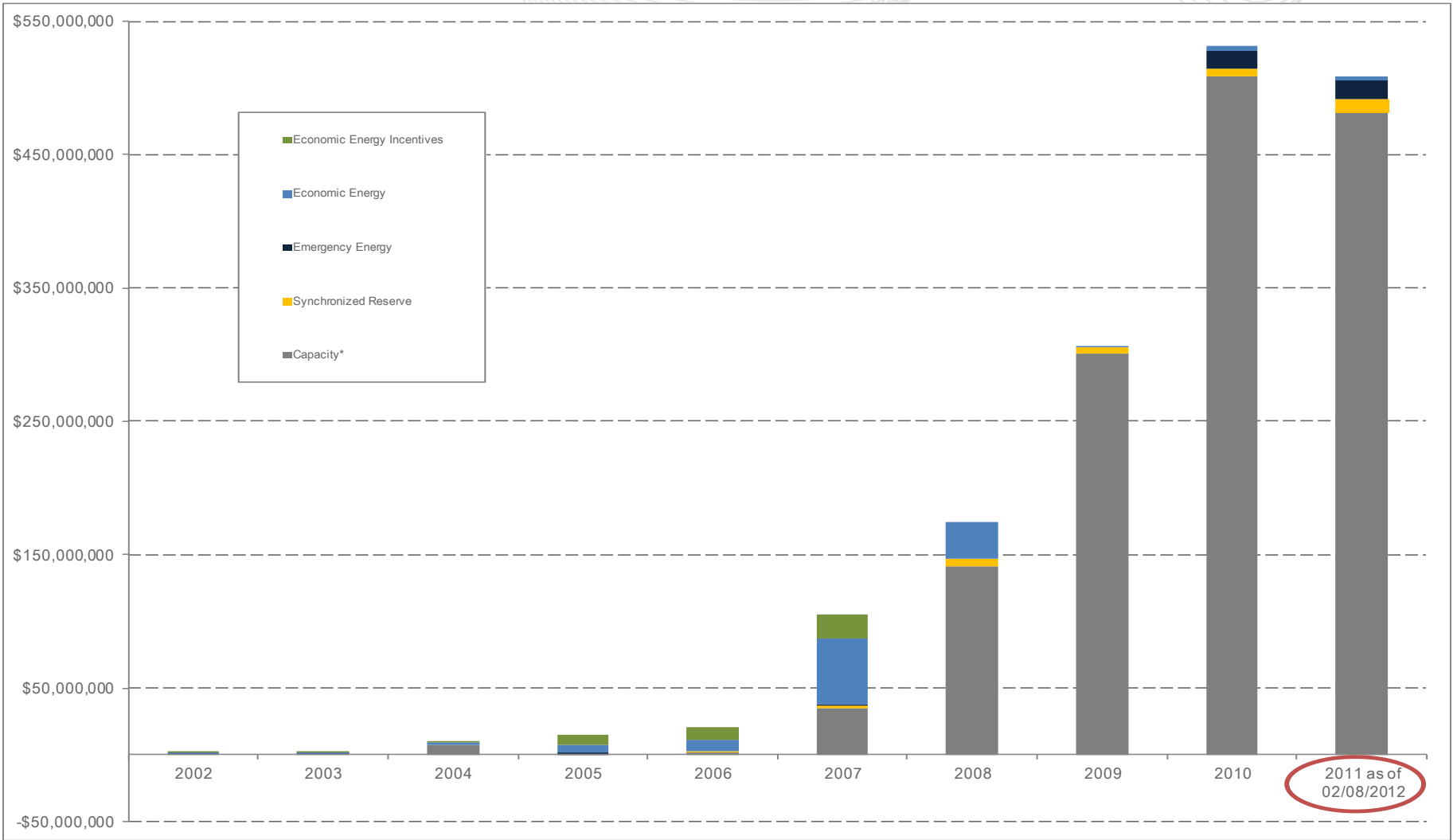
- 1) Data as of 01/09/2012.
- 2) Emergency MW are in ICAP.
- 3) Residential Direct Load Control (DLC) registrations reported as one site not a total number of end use customers in that program.
- 4) Sites and corresponding MWs in the Duke Energy Ohio Kentucky Zone (DEOK) will not become effective until 01/01/2012.



PJM Economic Load Response Capability (MW): 3/1/2006-1/9/2012



PJM Demand Side Response Estimated Revenue



*Capacity Net Revenue inclusive of Capacity Credits and Charges.



2011 Economic Demand Side Response Monthly Site Participation

State	Zone	JAN	FEB	MAR	APR	MAY	JUN	JUL	AUG	SEP	OCT	NOV	DEC
DC	PEPCO						1	1					
DE	DPL							2					
IL	COMED						1	2	2				
MD	APS						1	1	1				
	BGE						32	36	1				
	PEPCO							2	2	1			
NJ	JCPL							3					
	PSEG							4	8				
OH	AEP							2					
	DAY					1							
PA	APS	1	1	2	1	2	2	4	2	2		2	
	ATSI							1	1				
	DUQ		1					1	1	1			
	METED							4	1				
	PECO	6	6	4	6	3	14	21	18	3	1	3	2
	PENELEC						21		1				
	PPL	1			1	2	17	12		1			
VA	DOM	8	4	3	1	15	7	13	8	4	2	2	1
WV	AEP							2	1				
Total		16	12	9	9	23	96	111	47	12	3	7	3

Average Number of Unique Participating Sites per Month: 29



2011 Economic Demand Side Response Monthly Site Participation Day-Ahead Activity

State	Zone	JAN	FEB	MAR	APR	MAY	JUN	JUL	AUG	SEP	OCT	NOV	DEC
DC	PEPCO												
DE	DPL												
IL	COMED												
MD	APS												
	BGE												
	PEPCO												
NJ	JCPL												
	PSEG												
OH	AEP												
	DAY												
PA	APS												
	ATSI												
	DUQ												
	METED												
	PECO												
	PENELEC												
	PPL												
VA	DOM	4	1				1	1					
WV	AEP												
Total		4	1	0	0	0	1	1	0	0	0	0	0

Average Number of Unique Participating Sites per Month: 1



2011 Economic Demand Side Response Monthly Site Participation Real-Time Activity

State	Zone	JAN	FEB	MAR	APR	MAY	JUN	JUL	AUG	SEP	OCT	NOV	DEC
DC	PEPCO						1	1					
DE	DPL							2					
IL	COMED						1	2	2				
MD	APS						1	1	1				
	BGE						32	36	1				
	PEPCO							2	2	1			
NJ	JCPL							3					
	PSEG							4	8				
OH	AEP							2					
	DAY					1							
PA	APS	1	1	2	1	2	2	4	2	2		2	
	ATSI							1	1				
	DUQ		1					1	1	1			
	METED							4	1				
	PECO	6	6	4	6	3	14	21	18	3	1	3	2
	PENELEC						21		1				
	PPL	1			1	2	17	12		1			
VA	DOM	4	3	3	1	15	6	12	8	4	2	2	1
WV	AEP							2	1				
Total		12	11	9	9	23	95	110	47	12	3	7	3

Average Number of Unique Participating Sites per Month: 28



2011 Economic Demand Side Response Monthly MWh Reductions

State	Zone	JAN	FEB	MAR	APR	MAY	JUN	JUL	AUG	SEP	OCT	NOV	DEC
DC	PEPCO						3	2					
DE	DPL							0					
IL	COMED						11	77	110				
MD	APS						3	0	3				
	BGE						1,855	440	0				
	PEPCO							23	10	0			
NJ	JCPL							3					
	PSEG							16	18				
OH	AEP							95					
	DAY					19							
PA	APS	88	25	16	11	18	50	84	31	21		22	
	ATSI							8	12				
	DUQ		2					2	8	1			
	METED							141	43				
	PECO	1,179	27	36	34	25	120	120	95	20	1	42	8
	PENELEC						7		74				
	PPL	2			1	4	21	160		1			
VA	DOM	759	640	498	484	1,660	1,460	2,678	1,157	655	870	470	608
WV	AEP							137	78				
Total		2,028	694	550	530	1,726	3,528	3,985	1,639	698	871	534	616

Total MWh: 17,398



2011 Economic Demand Side Response Monthly MWh Reductions Day-Ahead Activity

State	Zone	JAN	FEB	MAR	APR	MAY	JUN	JUL	AUG	SEP	OCT	NOV	DEC
DC	PEPCO												
DE	DPL												
IL	COMED												
MD	APS												
	BGE												
	PEPCO												
NJ	JCPL												
	PSEG												
OH	AEP												
	DAY												
PA	APS												
	ATSI												
	DUQ												
	METED												
	PECO												
	PENELEC												
	PPL												
VA	DOM	129	55				35	17					
WV	AEP												
Total		129	55	0	0	0	35	17	0	0	0	0	0

Total Day Ahead MWh: 237



2011 Economic Demand Side Response Monthly MWh Reductions Real-Time Activity

State	Zone	JAN	FEB	MAR	APR	MAY	JUN	JUL	AUG	SEP	OCT	NOV	DEC
DC	PEPCO						3	2					
DE	DPL							0					
IL	COMED						11	77	110				
MD	APS						3	0	3				
	BGE						1,855	440	0				
	PEPCO							23	10	0			
NJ	JCPL							3					
	PSEG							16	18				
OH	AEP							95					
	DAY					19							
PA	APS	88	25	16	11	18	50	84	31	21		22	
	ATSI							8	12				
	DUQ		2					2	8	1			
	METED							141	43				
	PECO	1,179	27	36	34	25	120	120	95	20	1	42	8
	PENELEC						7		74				
	PPL	2			1	4	21	160		1			
VA	DOM	630	584	498	484	1,660	1,425	2,661	1,157	655	870	470	608
WV	AEP							137	78				
Total		1,899	639	550	530	1,726	3,492	3,968	1,639	698	871	534	616

Total Real Time MWh: 17,161



2011 Economic Demand Side Response Monthly Net CSP Credits

State	Zone	JAN	FEB	MAR	APR	MAY	JUN	JUL	AUG	SEP	OCT	NOV	DEC
DC	PEPCO						\$ 209	\$ 74					
DE	DPL							\$ 59					
IL	COMED						\$ 326	\$ 687	\$ 1,407				
MD	APS						\$ 121	\$ 28	\$ 294				
	BGE						\$ 681,184	\$ 49,087	\$ 7				
	PEPCO							\$ 2,073	\$ 274	\$ 8			
NJ	JCPL							\$ 1,075					
	PSEG							\$ 3,869	\$ 1,117				
OH	AEP							\$ 7,388					
	DAY					\$ 13,435							
PA	APS	\$ 4,152	\$ 1,800	\$ 128	\$ 682	\$ 1,295	\$ 2,574	\$ 5,212	\$ 610	\$ 863		\$ 406	
	ATSI							\$ 726	\$ 1,103				
	DUQ		\$ 44					\$ 100	\$ 373	\$ 16			
	METED							\$ 15,768	\$ 1,661				
	PECO	\$ 52,917	\$ 787	\$ 457	\$ 624	\$ 3,802	\$ 8,718	\$ 6,767	\$ 3,109	\$ 453	\$ 30	\$ 682	\$ 213
	PENELEC						\$ 206		\$ 3,170				
	PPL	\$ -			\$ -	\$ 2,432	\$ 698	\$ 42,890		\$ 19			
VA	DOM	\$ 83,166	\$ 85,968	\$ 10,883	\$ 36,227	\$ 250,991	\$ 212,496	\$ 231,611	\$ 70,084	\$ 18,311	\$ 48,833	\$ 14,436	\$ 44,890
WV	AEP							\$ 12,154	\$ 4,736				
Total		\$ 140,236	\$ 88,599	\$ 11,469	\$ 37,533	\$ 271,955	\$ 906,532	\$ 379,570	\$ 87,943	\$ 19,670	\$ 48,863	\$ 15,524	\$ 45,102

Total CSP Credits: \$2,052,996



2011 Economic Demand Side Response Monthly Net CSP Credits Day-Ahead Activity

State	Zone	JAN	FEB	MAR	APR	MAY	JUN	JUL	AUG	SEP	OCT	NOV	DEC
DC	PEPCO												
DE	DPL												
IL	COMED												
MD	APS												
	BGE												
	PEPCO												
NJ	JCPL												
	PSEG												
OH	AEP												
	DAY												
PA	APS												
	ATSI												
	DUQ												
	METED												
	PECO												
	PENELEC												
	PPL												
VA	DOM	\$ 5,395	\$ 2,334				\$ (70)	\$ -					
WV	AEP												
Total		\$ 5,395	\$ 2,334	\$ -	\$ -	\$ -	\$ (70)	\$ -	\$ -	\$ -	\$ -	\$ -	\$ -

Day Ahead CSP Credits: \$ 7,658



2011 Economic Demand Side Response Monthly Net CSP Credits Real-Time Activity

State	Zone	JAN	FEB	MAR	APR	MAY	JUN	JUL	AUG	SEP	OCT	NOV	DEC
DC	PEPCO						\$ 209	\$ 74					
DE	DPL							\$ 59					
IL	COMED						\$ 326	\$ 687	\$ 1,407				
MD	APS						\$ 121	\$ 28	\$ 294				
	BGE						\$ 681,184	\$ 49,087	\$ 7				
	PEPCO							\$ 2,073	\$ 274	\$ 8			
NJ	JCPL							\$ 1,075					
	PSEG							\$ 3,869	\$ 1,117				
OH	AEP							\$ 7,388					
	DAY					\$ 13,435							
PA	APS	\$ 4,152	\$ 1,800	\$ 128	\$ 682	\$ 1,295	\$ 2,574	\$ 5,212	\$ 610	\$ 863		\$ 406	
	ATSI							\$ 726	\$ 1,103				
	DUQ		\$ 44					\$ 100	\$ 373	\$ 16			
	METED							\$ 15,768	\$ 1,661				
	PECO	\$ 52,917	\$ 787	\$ 457	\$ 624	\$ 3,802	\$ 8,718	\$ 6,767	\$ 3,109	\$ 453	\$ 30	\$ 682	\$ 213
	PENELEC						\$ 206		\$ 3,170				
	PPL	\$ -			\$ -	\$ 2,432	\$ 698	\$ 42,890		\$ 19			
VA	DOM	\$ 77,772	\$ 83,634	\$ 10,883	\$ 36,227	\$ 250,991	\$ 212,566	\$ 231,611	\$ 70,084	\$ 18,311	\$ 48,833	\$ 14,436	\$ 44,890
WV	AEP							\$ 12,154	\$ 4,736				
Total		\$ 134,842	\$ 86,265	\$ 11,469	\$ 37,533	\$ 271,955	\$ 906,603	\$ 379,570	\$ 87,943	\$ 19,670	\$ 48,863	\$ 15,524	\$ 45,102

Real Time CSP Credits: \$2,045,338



2011 RPM (ILR & DR) Demand Side Response Monthly Capacity Revenue

Zone	JAN	FEB	MAR	APR	MAY	JUN	JUL	AUG	SEP	OCT	NOV	DEC
AECO	\$515,251	\$465,388	\$515,251	\$498,630	\$515,251	\$332,740	\$343,831	\$343,831	\$332,740	\$343,831	\$332,740	\$343,831
AEP	\$7,718,744	\$6,971,769	\$7,718,744	\$7,469,752	\$7,718,744	\$5,216,988	\$5,390,887	\$5,390,887	\$5,216,988	\$5,390,887	\$5,216,988	\$5,390,887
APS	\$4,272,819	\$3,859,321	\$4,272,819	\$4,134,986	\$4,272,819	\$3,300,774	\$3,410,799	\$3,410,799	\$3,300,774	\$3,410,799	\$3,300,774	\$3,410,799
ATSI						\$4,665	\$4,821	\$4,821	\$4,665	\$4,821	\$4,665	\$4,821
BGE	\$5,039,828	\$4,552,103	\$5,039,828	\$4,877,253	\$5,039,828	\$3,513,455	\$3,630,571	\$3,630,571	\$3,513,455	\$3,630,571	\$3,513,455	\$3,630,571
COMED	\$8,156,971	\$7,367,587	\$8,156,971	\$7,893,843	\$8,156,971	\$5,980,903	\$6,180,266	\$6,180,266	\$5,980,903	\$6,180,266	\$5,980,903	\$6,180,266
DAY	\$1,151,545	\$1,040,105	\$1,151,545	\$1,114,399	\$1,151,545	\$797,889	\$824,485	\$824,485	\$797,889	\$824,485	\$797,889	\$824,485
DOM	\$5,447,494	\$4,920,317	\$5,447,494	\$5,271,768	\$5,447,494	\$3,849,488	\$3,977,804	\$3,977,804	\$3,849,488	\$3,977,804	\$3,849,488	\$3,977,804
DPL	\$1,088,233	\$982,920	\$1,088,233	\$1,053,128	\$1,088,233	\$790,970	\$817,336	\$817,336	\$790,970	\$817,336	\$790,970	\$817,336
DUQ	\$1,118,544	\$1,010,298	\$1,118,544	\$1,082,462	\$1,118,544	\$2,340	\$2,418	\$2,418	\$2,340	\$2,418	\$2,340	\$2,418
JCPL	\$1,301,034	\$1,175,128	\$1,301,034	\$1,259,066	\$1,301,034	\$854,729	\$883,220	\$883,220	\$854,729	\$883,220	\$854,729	\$883,220
METED	\$1,205,089	\$1,088,468	\$1,205,089	\$1,166,215	\$1,205,089	\$880,176	\$909,516	\$909,516	\$880,176	\$909,516	\$880,176	\$909,516
PECO	\$2,826,229	\$2,552,723	\$2,826,229	\$2,735,060	\$2,826,229	\$2,298,664	\$2,375,286	\$2,375,286	\$2,298,664	\$2,375,286	\$2,298,664	\$2,375,286
PENELEC	\$1,827,610	\$1,650,744	\$1,827,610	\$1,768,655	\$1,827,610	\$1,335,716	\$1,380,240	\$1,380,240	\$1,335,716	\$1,380,240	\$1,335,716	\$1,380,240
PEPCO	\$1,307,359	\$1,180,840	\$1,307,359	\$1,265,186	\$1,307,359	\$1,137,037	\$1,174,938	\$1,174,938	\$1,137,037	\$1,174,938	\$1,137,037	\$1,174,938
PPL	\$4,115,164	\$3,716,922	\$4,115,164	\$3,982,417	\$4,115,164	\$2,651,235	\$2,739,610	\$2,739,610	\$2,651,235	\$2,739,610	\$2,651,235	\$2,739,610
PSEG	\$2,536,813	\$2,291,315	\$2,536,813	\$2,454,980	\$2,536,813	\$1,420,962	\$1,468,327	\$1,468,327	\$1,420,962	\$1,468,327	\$1,420,962	\$1,468,327
RECO	\$9,266	\$8,369	\$9,266	\$8,967	\$9,266	\$21,799	\$22,526	\$22,526	\$21,799	\$22,526	\$21,799	\$22,526
Total	\$49,637,993	\$44,834,317	\$49,637,993	\$48,036,767	\$49,637,993	\$34,390,530	\$35,536,881	\$35,536,881	\$34,390,530	\$35,536,881	\$34,390,530	\$35,536,881

Total Capacity Credits: \$487,104,180

Note:

1) Values represent RPM revenue, not revenue associated with FRR plans.



2011 Economic Demand Side Response Monthly UDS Activity

Year	Time Month	CSPs		Zone		Sites			MWh			Site Hours			Payments Settled
		Notified	Settled	Notified	Settled	Notified	Settled	%	Notified	Settled	%	Notified	Settled	%	
2011	1	1	0	1	0	1	0	0%	27	0	0%	3	0	0%	\$0
2011	2	1	0	1	0	1	0	0%	30	0	0%	3	0	0%	\$0
2011	3	0	0	0	0	0	0	0%	0	0	0%	0	0	0%	\$0
2011	4	1	0	2	0	3	0	0%	17	0	0%	22	0	0%	\$0
2011	5	2	2	12	3	125	15	12%	363	58	16%	535	41	8%	\$18,889
2011	6	3	3	7	3	52	36	69%	1,794	1,859	104%	338	185	55%	\$671,359
2011	7	4	4	5	4	15	5	33%	202	85	42%	120	27	23%	\$19,921
2011	8	2	1	3	1	12	5	42%	34	2	6%	45	12	27%	\$233
2011	9	1	0	1	0	1	0	0%	0	0	0%	2	0	0%	\$0
2011	10	2	1	2	1	2	1	50%	21	9	45%	4	3	75%	\$857
2011	11	1		1		1			0			4			
2011	12	1		1		1			1			6			

YTD Totals 214 62 ▲ 29% 2488 2013 ▲ 81% 1082 268 ▲ 25% \$711,258

YTD Average 2 1 3 1

Notified = PJM hours dispatched - Self schedule hours where self schedule hour is same as dispatch hour.

Settled = All settlement hours during the PJM dispatch window where settlement hours that correlate to self schedule notification are omitted

Notes:

1) If a CSP self-schedules a customer during the same hour the customer is dispatched by PJM, the hour is NOT considered as PJM Dispatched. This method is consistent with the current PJM settlement rules.

2) "Settled" based on confirmed settlement information and "Notified" based on PJM dispatch and self-schedule notification information.

3) Settlement information is submitted up to 60 days after the event. Therefore, YTD performance reflected in this report for the current 2 months is artificially low due to incomplete information at the time of report preparation.



2011 Economic Demand Side Response Monthly Self Scheduled Activity

Year	Time Month	CSPs		Zone		Sites			MWh			Site Hours			Payments Actual
		Notified	Settled	Notified	Settled	Notified	Settled	%	Notified	Settled	%	Notified	Settled	%	
2011	1	4	2	9	4	36	12	33%	7,272	1,899	26%	4,367	339	8%	\$134,842
2011	2	5	4	8	4	27	11	41%	1,563	639	41%	786	145	18%	\$86,265
2011	3	3	3	5	3	15	9	60%	1,136	550	48%	747	136	18%	\$11,469
2011	4	3	3	4	4	12	9	75%	1,050	530	50%	806	111	14%	\$37,533
2011	5	4	3	6	3	23	8	35%	2,484	1,667	67%	1,296	126	10%	\$253,066
2011	6	9	7	15	8	298	84	28%	3,029	1,633	54%	2,638	647	25%	\$235,244
2011	7	14	12	16	14	207	108	52%	6,821	3,883	57%	6,226	1,359	22%	\$359,649
2011	8	13	9	17	12	175	43	25%	3,986	1,637	41%	3,537	472	13%	\$87,710
2011	9	6	4	12	6	45	12	27%	1,564	698	45%	869	78	9%	\$19,670
2011	10	2	2	4	2	7	2	29%	1,044	862	83%	656	16	2%	\$48,006
2011	11	3	3	5	3	12	7	58%	644	534	83%	252	59	23%	\$15,524
2011	12	3	2	5	2	8	3	38%	793	616	78%	232	22	9%	\$45,102

YTD Totals 865 308 36% 31,387 15,148 48% 22,412 3,510 16% \$1,334,080

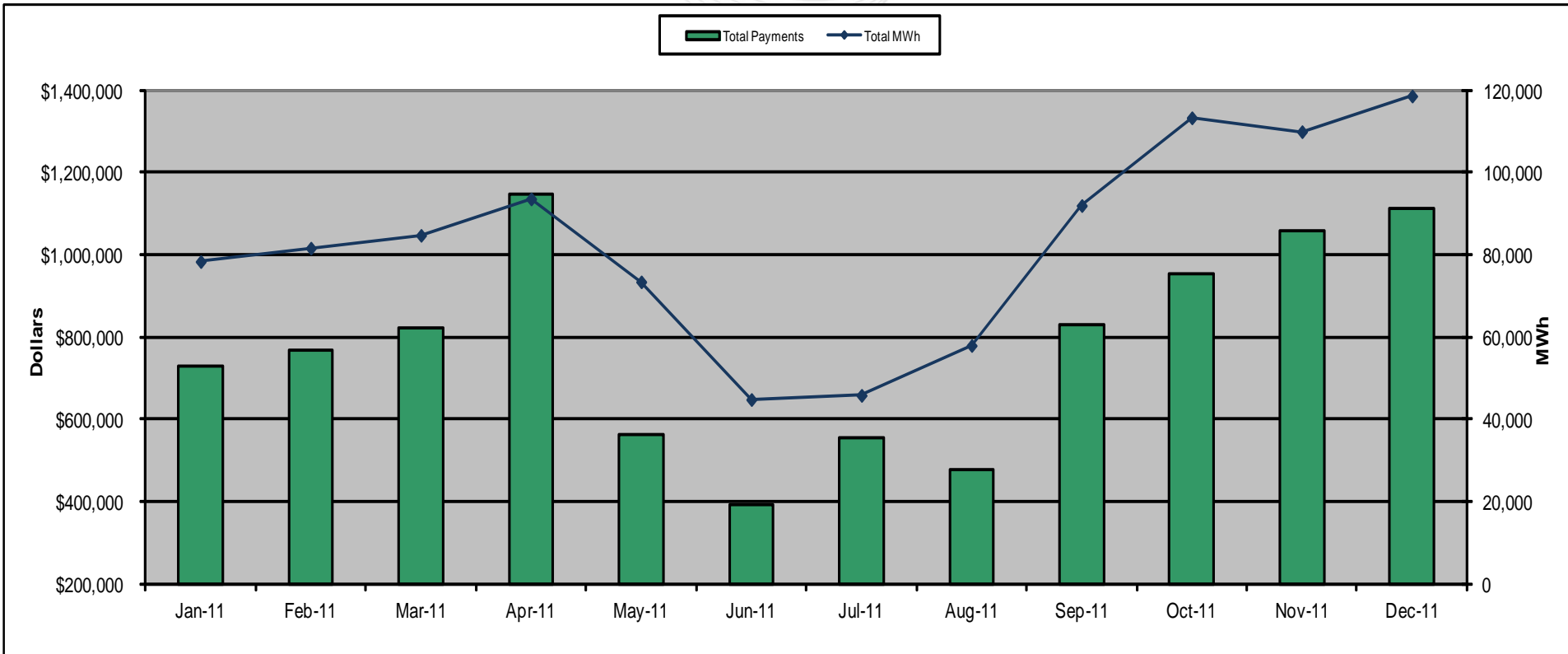
YTD Average 6 5 9 5

Notified = CSP self scheduled volume.
Settled = All settlement hours submitted for self scheduled notifications.

Notes:

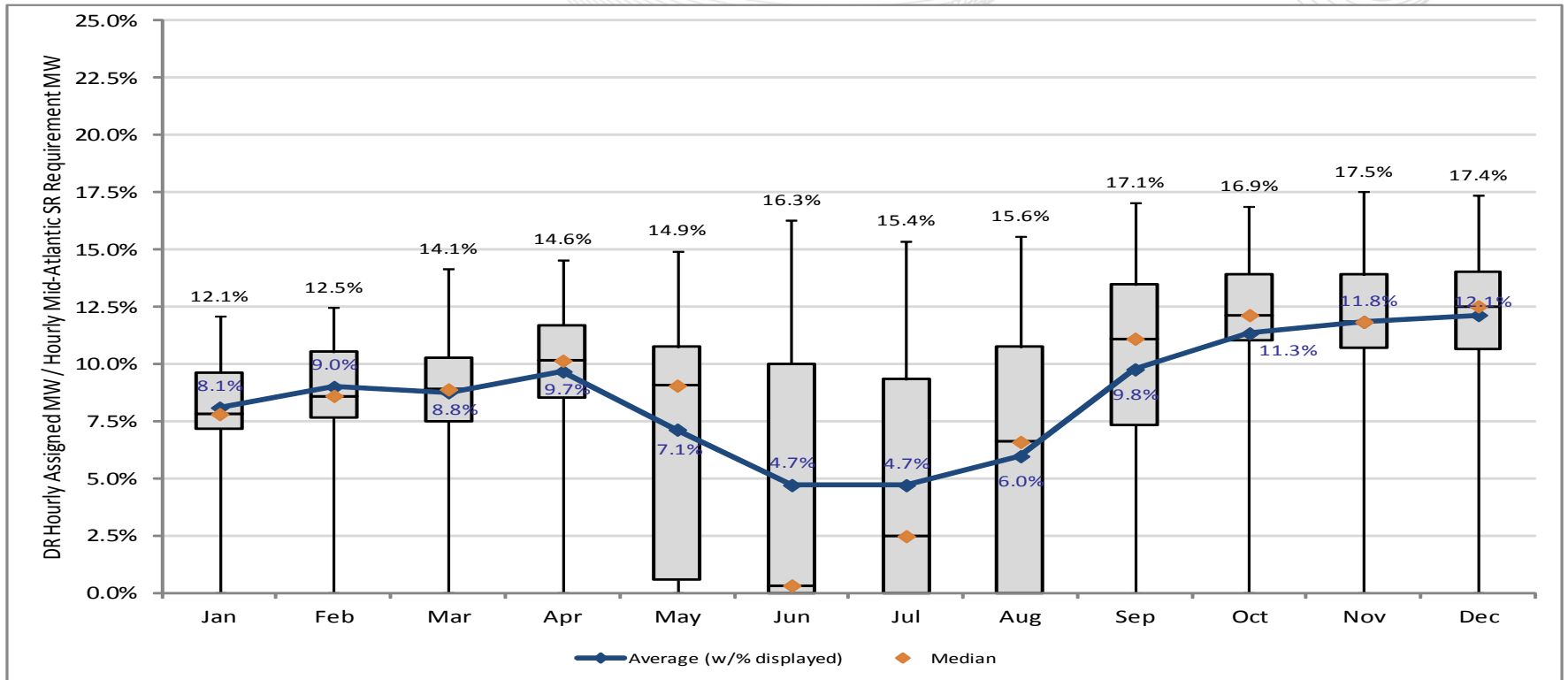
- 1) "Settled" based on confirmed settlement information and "Notified" based on self-schedule notification information.
- 2) Settlement information is submitted up to 60 days after the event. Therefore, YTD performance reflected in this report for the current 2 months is artificially low due to incomplete information at the time of report preparation.**

2011 Demand Side Response Synchronized Reserve Participation



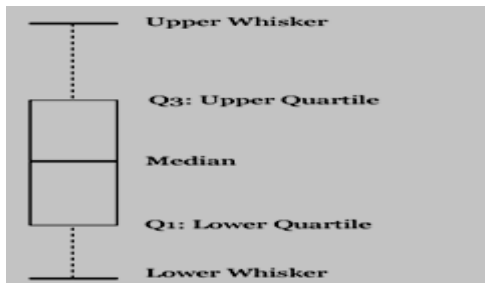
	Jan-11	Feb-11	Mar-11	Apr-11	May-11	Jun-11	Jul-11	Aug-11	Sep-11	Oct-11	Nov-11	Dec-11	Total
Total MWh	78,332	81,606	84,701	93,564	73,401	44,797	45,809	57,920	91,948	113,287	109,918	118,572	993,854
Total Payments	\$729,397	\$765,517	\$822,444	\$1,146,458	\$560,804	\$392,701	\$555,103	\$476,478	\$829,349	\$953,275	\$1,056,154	\$1,111,830	\$9,399,509
\$ / MWh	\$9.31	\$9.38	\$9.71	\$12.25	\$7.64	\$8.77	\$12.12	\$8.23	\$9.02	\$8.41	\$9.61	\$9.38	\$9.46

MWh = sum of the settled MW
(Example: 1 MW load available for 12 hours = 12 MWh)



Note:

- 1) Demand Response are Tier 2 resources.
- 2) The boxplots are interpreted as follows:



The upper whisker is the maximum value

The box top is the Upper Quartile (75%) value

The line inside the box is the median (50%) value

The box bottom is the Lower Quartile (25%) value

The lower whisker is the minimum value