



# 2012 Load Response Activity Report

## April 2013

**James McAnany**  
**PJM Demand Side Response**  
**April 9, 2013**



# Delivery Year 2012-2013 Active Participants in PJM Load Response Program: as of 04/09/2013 (page 1 of 2)

State	Zone	EDC	Economic Program		Emergency Energy Only		Emergency DR		Emergency Total MW	Emergency MWs Breakout	
			Sites	MW	Sites	MW	Sites	MW		Emergency Only	Both Emergency and Economic
DC	PEPCO	PEPCO	17	1.7			191	63.2	63.2	62.1	1.1
DE	DPL	DEMEC	3	0.8			24	8.6	8.6	7.6	1.1
DE	DPL	DOVDE					2	3.3	3.3	3.3	0.0
DE	DPL	DPL	10	56.9			149	86.2	86.2	58.9	27.4
DE	DPL	ODEC					5	2.3	2.3	2.3	0.0
IL	COMED	COMED	53	101.9			1166	775.3	775.3	625.5	149.7
IL	COMED	IMEAA1					2	36.8	36.8	36.8	0.0
IN	AEP	AEPSCT					61	275.9	275.9	275.9	0.0
IN	AEP	HEREC					1	19.2	19.2	19.2	0.0
IN	AEP	WVSDI					1	12.5	12.5	12.5	0.0
KY	DEOK	DEK					57	43.0	43.0	43.0	0.0
MD	APS	AETSAP	2	17.9			152	85.2	85.2	67.6	17.6
MD	APS	AETSHG					5	1.9	1.9	1.9	0.0
MD	BGE	BC	106	608.8			810	861.1	861.1	234.2	626.9
MD	DPL	DPL	8	29.9			223	82.0	82.0	47.0	34.9
MD	DPL	EASTON					5	2.9	2.9	2.9	0.0
MD	DPL	ODEC	1	0.5			29	9.3	9.3	8.6	0.7
MD	PEPCO	PEPCO	18	127.1			325	254.5	254.5	115.1	139.4
MD	PEPCO	SMECO	1	0.5			70	62.8	62.8	62.4	0.5
MI	AEP	AEPSCT					3	2.5	2.5	2.5	0.0
NC	DOM	DOMEDC	1	24.4					0.0	0.0	0.0
NJ	AECO	AE	13	38.0			227	90.9	90.9	50.5	40.4
NJ	AECO	VMEU	2	0.9			23	7.5	7.5	6.6	0.9
NJ	JCPL	AECI					1	0.2	0.2	0.2	0.0
NJ	JCPL	JCBGS	15	49.2			415	190.7	190.7	182.6	8.1
NJ	PSEG	PSEG	50	38.2			966	375.0	375.0	353.2	21.8
NJ	RECO	RECO					20	5.6	5.6	5.6	0.0
NY	PENELEC	PaElec					2	1.6	1.6	1.6	0.0
OH	AEP	AEPCLL					8	12.1	12.1	12.1	0.0
OH	AEP	AEPSCT	8	4.6			556	459.7	459.7	455.7	4.0
OH	AEP	AMPO					21	117.2	117.2	117.2	0.0
OH	AEP	BUCK					4	38.7	38.7	38.7	0.0
OH	ATSI	AMPO					34	300.9	300.9	300.9	0.0
OH	ATSI	CPP					19	77.4	77.4	77.4	0.0
OH	ATSI	OEEDC	9	79.4			550	545.6	545.6	482.2	63.3
OH	DAY	AMPO					13	41.7	41.7	41.7	0.0
OH	DAY	BUCK					1	3.4	3.4	3.4	0.0
OH	DAY	DAYEDC					132	61.5	61.5	61.5	0.0

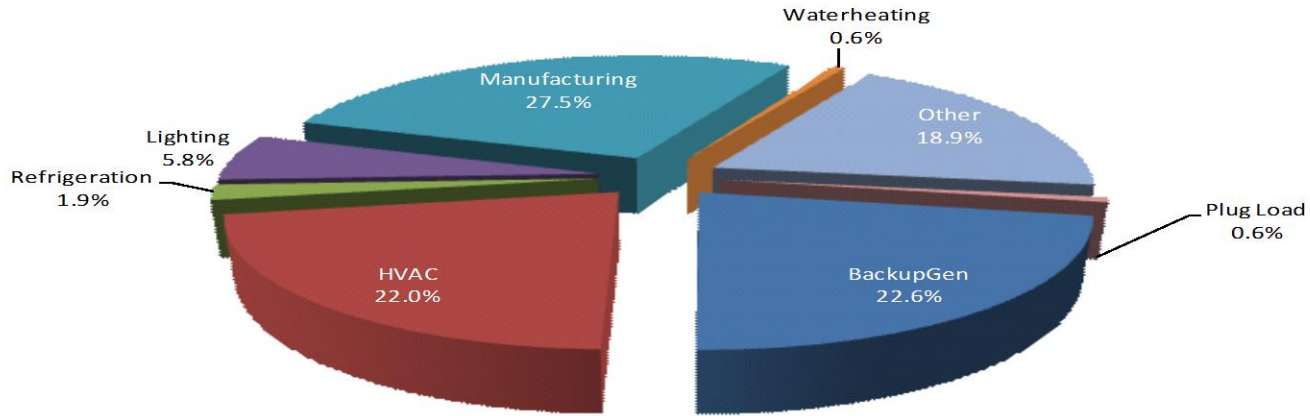


# Delivery Year 2012-2013 Active Participants in PJM Load Response Program: as of 04/09/2013 (page 2 of 2)

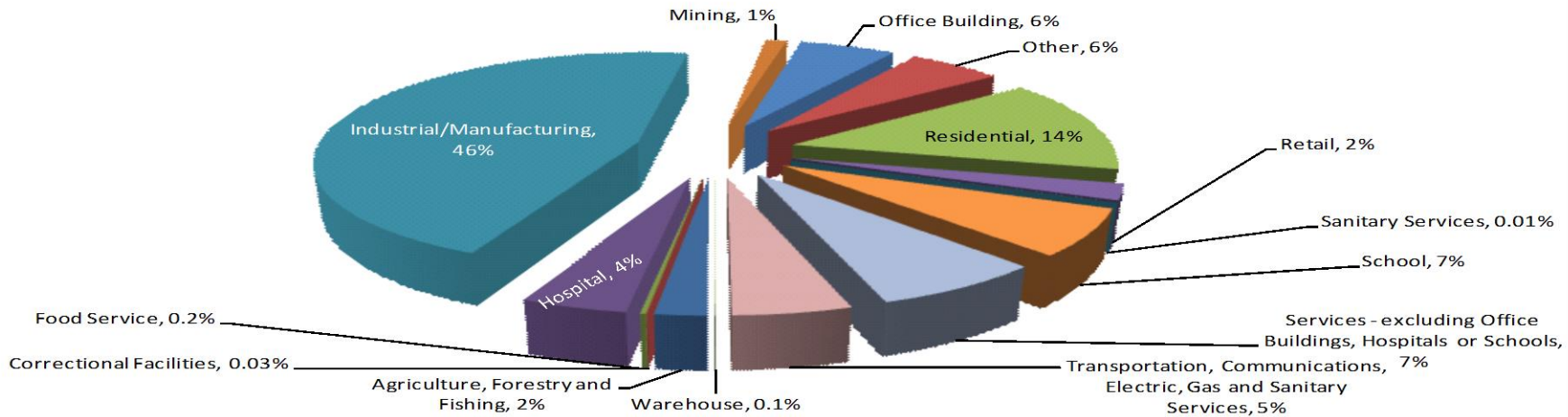
State	Zone	EDC	Economic Program		Emergency Energy Only		Emergency DR		Emergency Total MW	Emergency MWs Breakout	
			Sites	MW	Sites	MW	Sites	MW		Emergency Only	Both Emergency and Economic
OH	DEOK	DEOHIO	2	51.0			216	252.4	252.4	149.1	103.3
PA	APS	AECI					5	2.9	2.9	2.9	0.0
PA	APS	AETSAP	14	28.3			545	313.0	313.0	277.9	35.0
PA	APS	CHBDTE					1	0.4	0.4	0.4	0.0
PA	ATSI	PAPWR	1	0.1			39	57.2	57.2	57.2	0.0
PA	DUQ	DLCO	18	41.1	1	4.0	315	116.8	120.8	92.0	28.9
PA	METED	AECI					1	1.6	1.6	1.6	0.0
PA	METED	MetEd	50	64.0			444	200.8	200.8	144.9	55.8
PA	PECO	PE	253	133.8			1308	442.5	442.5	319.4	123.1
PA	PENELEC	AECI					17	16.9	16.9	16.9	0.0
PA	PENELEC	PaElec	17	25.5			544	278.5	278.5	266.5	12.0
PA	PENELEC	WELLSB					5	0.7	0.7	0.7	0.0
PA	PPL	AMPO					7	3.1	3.1	3.1	0.0
PA	PPL	CTZECL					8	3.2	3.2	3.2	0.0
PA	PPL	PPL	292	329.1			1279	620.0	620.0	364.2	255.8
PA	PPL	UGI-UI					19	8.6	8.6	8.6	0.0
TN	AEP	AEPSCT	1	30.0			3	5.7	5.7	5.7	0.0
VA	AEP	AEPSCT	2	17.0			163	166.3	166.3	140.1	26.2
VA	AEP	AMPO					10	22.6	22.6	22.6	0.0
VA	APS	AETSAP					1	0.1	0.1	0.1	0.0
VA	APS	AMPO					3	1.1	1.1	1.1	0.0
VA	APS	ODEC					38	26.1	26.1	26.1	0.0
VA	DOM	CVEC					4	1.2	1.2	1.2	0.0
VA	DOM	DOMEDC	44	101.7			744	472.6	472.6	428.7	43.9
VA	DOM	DOMVME					16	96.9	96.9	96.9	0.0
VA	DOM	NVEC	5	43.2			10	15.1	15.1	0.5	14.6
VA	DOM	ODEC	2	72.2			28	79.1	79.1	7.1	72.0
VA	DPL	ODEC					10	1.6	1.6	1.6	0.0
WV	AEP	AEPSCT	3	48.8			286	203.4	203.4	167.9	35.5
WV	AEP	APWVP					8	2.1	2.1	2.1	0.0
WV	APS	AETSAP	3	37.0			260	117.5	117.5	87.0	30.6
<b>Total</b>			<b>1,024</b>	<b>2,204</b>	<b>1</b>	<b>4</b>	<b>12,610</b>	<b>8,548</b>	<b>8,552</b>	<b>6,577</b>	<b>1,975</b>

- Note:
- 1) Data as of 04/09/2013.
  - 2) Emergency MW are in ICAP.
  - 3) Economic MW are CSP reported Load Reduction values.
  - 4) Residential Direct Load Control (DLC) registrations reported as one site not a total number of end use customers in that program.

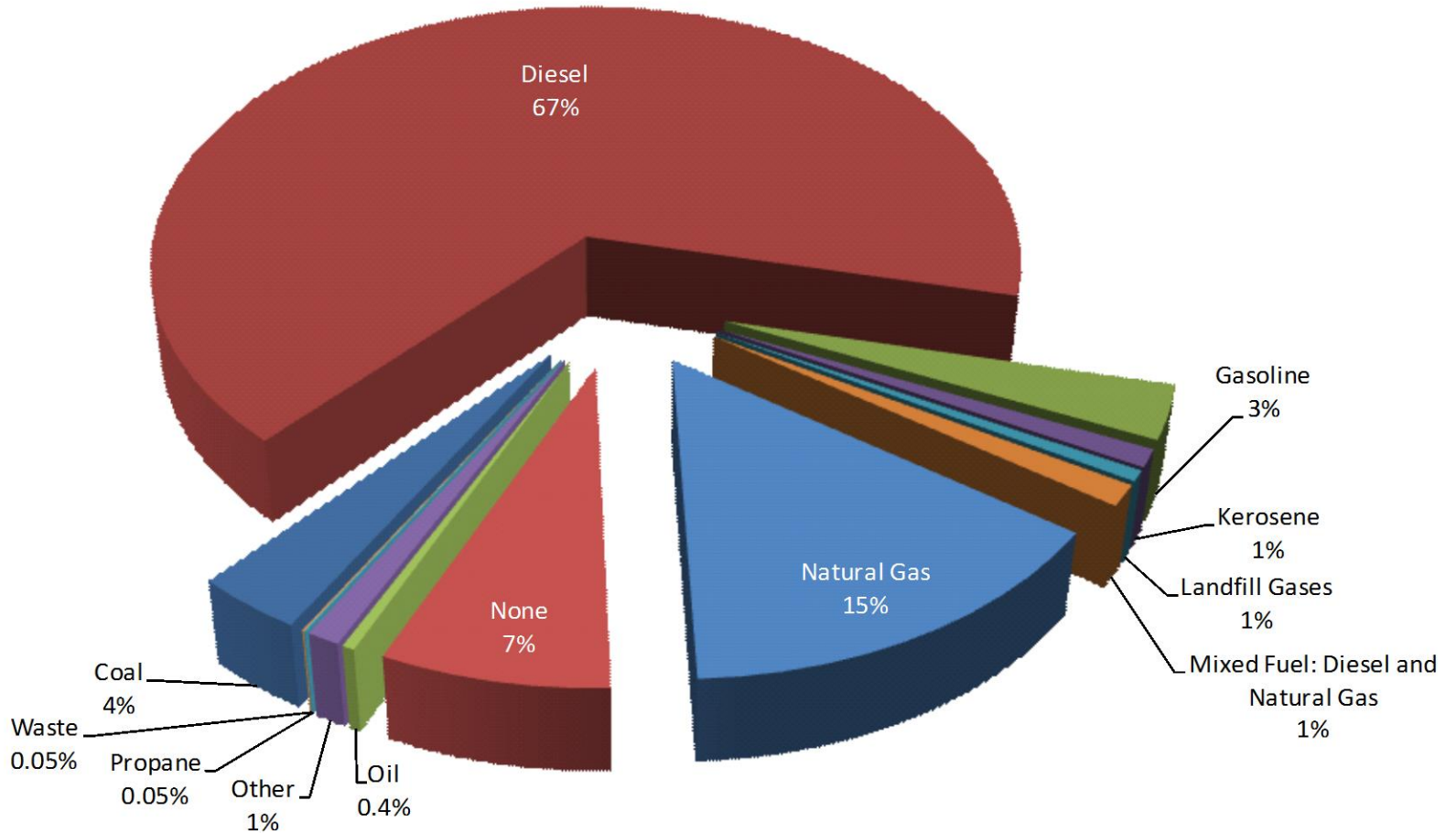
## Sources



## Business Segments



Note: data reported by CSPs having confirmed Load Management resources for DY 2012/2013.



Note: data reported by CSPs having confirmed Load Management resources for DY 2012/2013.



**SYNCHRONOUS RESERVES**

<b>Sites</b>												
<b>Zone</b>	<b>JAN</b>	<b>FEB</b>	<b>MAR</b>	<b>APR</b>	<b>MAY</b>	<b>JUN</b>	<b>JUL</b>	<b>AUG</b>	<b>SEP</b>	<b>OCT</b>	<b>NOV</b>	<b>DEC</b>
RFC Mid-Atlantic	91	96	98	76	86	86	101	112	115	122	126	141
RFC Non-Mid-Atlantic	2	2	1	0	0	0	0	0	0	0	0	0
<b>RTO Total</b>	<b>93</b>	<b>98</b>	<b>99</b>	<b>76</b>	<b>86</b>	<b>86</b>	<b>101</b>	<b>112</b>	<b>115</b>	<b>122</b>	<b>126</b>	<b>141</b>

**Average Number of Unique Participating Sites per Month: 105**

<b>MW</b>												
<b>Zone</b>	<b>JAN</b>	<b>FEB</b>	<b>MAR</b>	<b>APR</b>	<b>MAY</b>	<b>JUN</b>	<b>JUL</b>	<b>AUG</b>	<b>SEP</b>	<b>OCT</b>	<b>NOV</b>	<b>DEC</b>
RFC Mid-Atlantic	359	382	453	393	402	386	404	409	413	414	415	419
RFC Non-Mid-Atlantic	26	26	24	0	0	0	0	0	0	0	0	0
<b>RTO Total</b>	<b>385</b>	<b>408</b>	<b>478</b>	<b>393</b>	<b>402</b>	<b>386</b>	<b>404</b>	<b>409</b>	<b>413</b>	<b>414</b>	<b>415</b>	<b>419</b>

**Average MW per Month: 410**

**REGULATION**

<b>Sites</b>												
<b>Zone</b>	<b>JAN</b>	<b>FEB</b>	<b>MAR</b>	<b>APR</b>	<b>MAY</b>	<b>JUN</b>	<b>JUL</b>	<b>AUG</b>	<b>SEP</b>	<b>OCT</b>	<b>NOV</b>	<b>DEC</b>
<b>RTO Total</b>	<b>2</b>	<b>2</b>	<b>26</b>	<b>26</b>	<b>26</b>	<b>28</b>	<b>28</b>	<b>29</b>	<b>29</b>	<b>29</b>	<b>29</b>	<b>30</b>

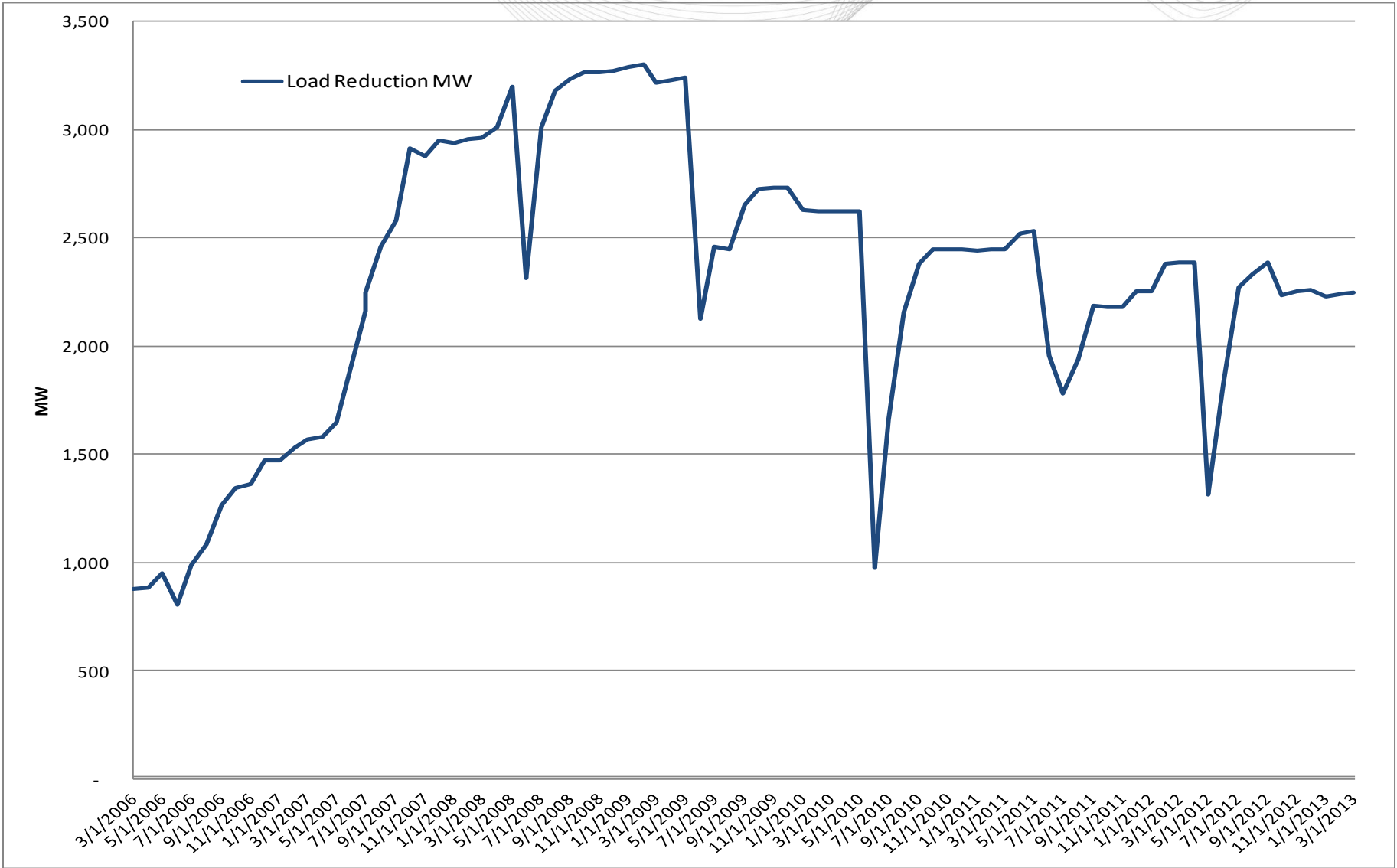
**Average Number of Unique Participating Sites per Month: 24**

<b>MW</b>												
<b>Zone</b>	<b>JAN</b>	<b>FEB</b>	<b>MAR</b>	<b>APR</b>	<b>MAY</b>	<b>JUN</b>	<b>JUL</b>	<b>AUG</b>	<b>SEP</b>	<b>OCT</b>	<b>NOV</b>	<b>DEC</b>
<b>RTO Total</b>	<b>0.2</b>	<b>0.2</b>	<b>0.5</b>	<b>0.5</b>	<b>0.5</b>	<b>3.7</b>	<b>3.7</b>	<b>4.5</b>	<b>4.5</b>	<b>4.5</b>	<b>4.5</b>	<b>4.8</b>

**Average MW per Month: 2.7**

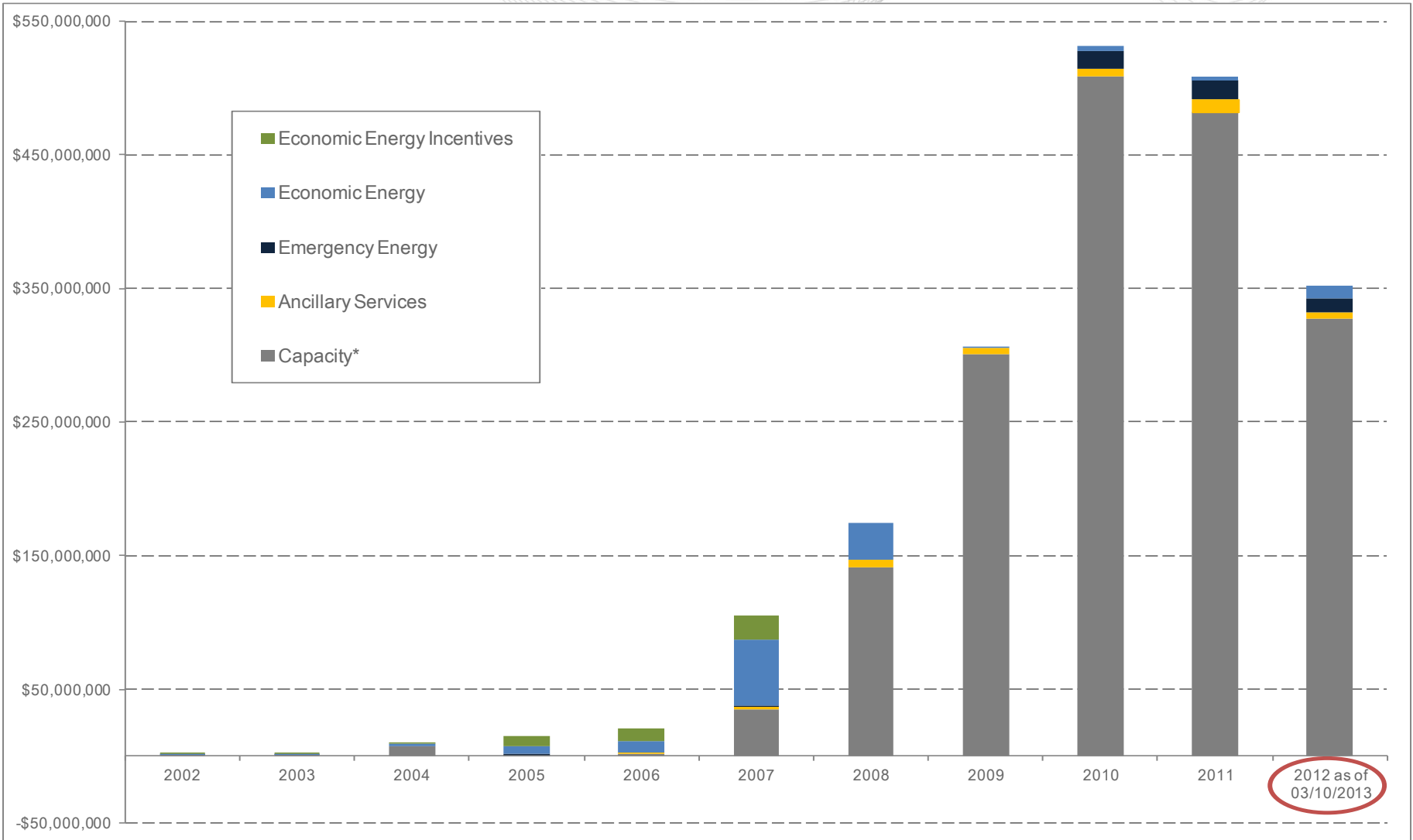
**Note:**

- 1) Data as of 02/13/2013.
- 2) MW are CSP reported Load Reduction values.





# PJM Demand Side Response Estimated Revenue



\*Capacity Net Revenue inclusive of Capacity Credits and Charges.



## 2012 Economic Demand Side Response Monthly Registration Participation

State	Zone	JAN	FEB	MAR	APR	MAY	JUN	JUL	AUG	SEP	OCT	NOV	DEC
DE	DPL						1	2	2	2	1		
IL	COMED				1	2	11	12	11	8	2	5	2
MD	BGE						3	41	38			37	
	DPL						3	3					
	PEPCO						4	4	5				
NC	DOM						1	1	1	1			
NJ	AECO							4					
	JCPL						1	1					
	PSEG				4	4	6	11	8	6	6	2	
OH	AEP						2	1					
	ATSI						3	2					
PA	APS						32	33	27	28	1		
	ATSI						1	1	2	2			
	DUQ				1		14	13	19				
	METED	1					18	19	20	15	1	1	1
	PECO	2		1	2	5	100	106	85	48	10	7	3
	PENELEC				2	2	21	21	17	7	2	2	
	PPL					8	114	110	126	7	2	2	1
VA	AEP						1						
	DOM	3	4	2	2	3	12	16	10	9	4	6	2
WV	AEP						1	2	1				
	APS					1	1	1	1	1	1	2	1
<b>Total</b>		<b>6</b>	<b>4</b>	<b>3</b>	<b>12</b>	<b>25</b>	<b>350</b>	<b>404</b>	<b>373</b>	<b>134</b>	<b>30</b>	<b>64</b>	<b>10</b>

**Average Number of Unique Participating Registrations per Month 118**



## 2012 Economic Demand Side Response Monthly Registration Participation Day-Ahead Activity

State	Zone	JAN	FEB	MAR	APR	MAY	JUN	JUL	AUG	SEP	OCT	NOV	DEC
DE	DPL						1	1	1	1			
IL	COMED						2	2	2	1		1	
MD	BGE						1	1					
	DPL												
	PEPCO								1				
NC	DOM						1	1	1	1			
NJ	AECO												
	JCPL						1	1					
	PSEG				2	2	3	4	4	3	3		
OH	AEP						1	1					
	ATSI												
PA	APS						1	1					
	ATSI												
	DUQ												
	METED	1					1	2	2	1			
	PECO				1	2	5	4	3	2	2	2	
	PENELEC				1	1	2	2	1	1	1		
	PPL						1	8	3	1		1	
VA	AEP												
	DOM				1	1	3	4	2	3	1		1
WV	AEP						1	1	1				
	APS					1						1	1
<b>Total</b>		<b>1</b>	<b>0</b>	<b>0</b>	<b>5</b>	<b>7</b>	<b>24</b>	<b>33</b>	<b>21</b>	<b>14</b>	<b>7</b>	<b>5</b>	<b>2</b>

**Average Number of Unique Participating Registrations per Month 10**



## 2012 Economic Demand Side Response Monthly Registration Participation Real-Time Activity

State	Zone	JAN	FEB	MAR	APR	MAY	JUN	JUL	AUG	SEP	OCT	NOV	DEC
DE	DPL							1	1	1	1		
IL	COMED				1	2	9	10	9	7	2	4	2
MD	BGE						2	40	38			37	
	DPL						3	3					
	PEPCO						4	4	4				
NC	DOM												
NJ	AECO							4					
	JCPL												
	PSEG				2	2	3	7	4	3	3	2	
OH	AEP						1						
	ATSI						3	2					
PA	APS						31	32	27	28	1		
	ATSI						1	1	2	2			
	DUQ				1		14	13	19				
	METED						17	17	18	14	1	1	
	PECO	2		1	1	3	95	102	82	46	8	5	1
	PENELEC				1	1	19	19	16	6	1	2	3
	PPL					8	113	102	123	6	2	1	1
VA	AEP						1						
	DOM	3	4	2	1	2	9	12	8	6	3	6	1
WV	AEP							1					
	APS						1	1	1	1	1	1	
<b>Total</b>		<b>5</b>	<b>4</b>	<b>3</b>	<b>7</b>	<b>18</b>	<b>326</b>	<b>371</b>	<b>352</b>	<b>120</b>	<b>23</b>	<b>59</b>	<b>8</b>

**Average Number of Unique Participating Registrations per Month 108**



## 2012 Economic Demand Side Response Monthly MWh Reductions

State	Zone	JAN	FEB	MAR	APR	MAY	JUN	JUL	AUG	SEP	OCT	NOV	DEC
DE	DPL						17	48	20	13	7		
IL	COMED				10	107	1,737	3,247	1,609	830	51	475	133
MD	BGE						20	805	179			18	
	DPL						82	99					
	PEPCO						359	363	329				
NC	DOM						2,912	5,800	1,071	72			
NJ	AECO							98					
	JCPL						324	1,738					
	PSEG				1,477	1,550	2,374	6,264	4,918	3,182	2,627	196	
OH	AEP						-1	-1					
	ATSI						61	29					
PA	APS						3,304	5,854	2,291	295	1,270		
	ATSI						7	9	4	1			
	DUQ						37	2	-1				
	METED	4					374	1,729	1,395	82	16	18	36
	PECO	15		1	18	43	1,394	3,587	2,195	807	403	195	50
	PENELEC				1,343	839	1,328	1,763	1,621	1,074	1,400	92	
	PPL					3	820	2,673	1,541	12	17	9	0
VA	AEP												
	DOM	251	392	366	2,505	6,132	8,358	8,587	7,444	7,398	6,079	4,834	3,486
WV	AEP						22	135					
	APS					43	86	701	1,267	186	868	484	174
<b>Total</b>		<b>270</b>	<b>392</b>	<b>367</b>	<b>5,353</b>	<b>8,716</b>	<b>23,616</b>	<b>43,531</b>	<b>25,884</b>	<b>13,950</b>	<b>12,738</b>	<b>6,321</b>	<b>3,880</b>

**Total MWh: 145,019**



## 2012 Economic Demand Side Response Monthly MWh Reductions Day-Ahead Activity

State	Zone	JAN	FEB	MAR	APR	MAY	JUN	JUL	AUG	SEP	OCT	NOV	DEC
DE	DPL						17	42	6	8			
IL	COMED						773	1,311	346	171			
MD	BGE						18	83					
	DPL												
	PEPCO								2				
NC	DOM						2,912	5,800	1,071	72			
NJ	AECO												
	JCPL						324	1,738					
	PSEG				1,462	1,424	2,314	5,475	1,551	1,863	173		
OH	AEP						-1	-1					
	ATSI												
PA	APS						373	302					
	ATSI												
	DUQ												
	METED	4					253	1,589	1,043	19			
	PECO				17	24	263	1,826	707	480	155	141	
	PENELEC				1,343	704	1,149	1,337	489	614	160		
	PPL						65	185	107	0			
VA	AEP												
	DOM				2,016	4,785	3,617	3,084	481	1,432	681		1,025
WV	AEP						22	-18					
	APS					43						164	174
<b>Total</b>		<b>4</b>	<b>0</b>	<b>0</b>	<b>4,839</b>	<b>6,981</b>	<b>12,100</b>	<b>22,752</b>	<b>5,802</b>	<b>4,658</b>	<b>1,169</b>	<b>306</b>	<b>1,199</b>

**Total Day Ahead MWh: 59,810**



## 2012 Economic Demand Side Response Monthly MWh Reductions Real-Time Activity

State	Zone	JAN	FEB	MAR	APR	MAY	JUN	JUL	AUG	SEP	OCT	NOV	DEC
DE	DPL							7	15	5	7		
IL	COMED				10	107	964	1,936	1,263	659	51	475	133
MD	BGE						1	723	179			18	
	DPL						82	99					
	PEPCO						359	363	327				
NC	DOM												
NJ	AECO							98					
	JCPL												
	PSEG				14	126	59	790	3,366	1,318	2,454	196	
OH	AEP						0						
	ATSI						61	29					
PA	APS						2,931	5,552	2,291	295	1,270		
	ATSI						7	9	4	1			
	DUQ						37	2	-1				
	METED						121	140	351	63	16	18	36
	PECO	15		1	1	18	1,132	1,761	1,489	327	248	54	50
	PENELEC				-1	135	179	427	1,133	460	1,240	92	
	PPL					3	755	2,488	1,435	12	17	9	0
VA	AEP												
	DOM	251	392	366	489	1,346	4,741	5,503	6,963	5,967	5,398	4,834	2,461
WV	AEP							152					
	APS						86	701	1,267	186	868	320	
<b>Total</b>		<b>266</b>	<b>392</b>	<b>367</b>	<b>514</b>	<b>1,735</b>	<b>11,516</b>	<b>20,779</b>	<b>20,082</b>	<b>9,292</b>	<b>11,569</b>	<b>6,016</b>	<b>2,680</b>

**Total Real Time MWh: 85,210**



## 2012 Economic Demand Side Response Monthly Net CSP Credits

State	Zone	JAN	FEB	MAR	APR	MAY	JUN	JUL	AUG	SEP	OCT	NOV	DEC
DE	DPL						\$ 1,688	\$ 4,969	\$ 1,535	\$ 877	\$ 330		
IL	COMED				\$ 334	\$ 4,818	\$ 58,512	\$ 214,929	\$ 103,397	\$ 51,333	\$ 1,641	\$ 20,989	\$ 4,710
MD	BGE						\$ 4,225	\$ 160,724	\$ 16,046				
	DPL						\$ 8,349	\$ 20,118					
	PEPCO						\$ 27,127	\$ 74,033	\$ 17,629				
NC	DOM						\$ 242,566	\$ 573,056	\$ 90,499	\$ 20,658			
NJ	AECO							\$ 20,555					
	JCPL						\$ 39,398	\$ 205,242					
	PSEG				\$ 45,257	\$ 67,233	\$ 115,339	\$ 391,845	\$ 260,905	\$ 144,994	\$ 122,527	\$ 8,339	
OH	AEP						\$ 159	\$ (109)					
	ATSI						\$ 2,173	\$ 5,218					
PA	APS						\$ 189,278	\$ 452,045	\$ 154,468	\$ 22,680	\$ 65,528		
	ATSI						\$ 340	\$ 966	\$ 260	\$ 76			
	DUQ						\$ 2,793	\$ 151	\$ 88				
	METED	\$ 133					\$ 36,005	\$ 87,722	\$ 73,346	\$ 6,203	\$ 787	\$ 664	\$ 12
	PECO	\$ 395		\$ 17	\$ 580	\$ 1,405	\$ 89,501	\$ 311,011	\$ 135,796	\$ 51,227	\$ 18,555	\$ 9,435	\$ 1,876
	PENELEC				\$ 42,955	\$ 49,607	\$ 73,944	\$ 134,515	\$ 74,507	\$ 45,357	\$ 64,532	\$ 3,848	
	PPL					\$ 127	\$ 65,303	\$ 292,057	\$ 83,073	\$ 1,380	\$ 559	\$ (1,054)	\$ 13
VA	AEP												
	DOM	\$ 8,137	\$ 14,994	\$ 6,732	\$ 106,270	\$ 359,924	\$ 492,093	\$ 768,064	\$ 470,570	\$ 350,000	\$ 295,107	\$ 293,400	\$ 123,044
WV	AEP						\$ 1,309	\$ 11,919	\$ (6)				
	APS					\$ 1,643	\$ 4,937	\$ 41,998	\$ 56,430	\$ 9,928	\$ 40,280	\$ 23,084	\$ 6,029
<b>Total</b>		<b>\$ 8,664</b>	<b>\$ 14,994</b>	<b>\$ 6,749</b>	<b>\$ 195,396</b>	<b>\$ 484,756</b>	<b>\$ 1,455,040</b>	<b>\$ 3,771,027</b>	<b>\$ 1,538,545</b>	<b>\$ 704,712</b>	<b>\$ 609,844</b>	<b>\$ 358,706</b>	<b>\$ 135,684</b>

**Total CSP Credits: \$9,284,118**





## 2012 Economic Demand Side Response Monthly Net CSP Credits Day-Ahead Activity

State	Zone	JAN	FEB	MAR	APR	MAY	JUN	JUL	AUG	SEP	OCT	NOV	DEC
DE	DPL						\$ 1,688	\$ 4,530	\$ 413	\$ 460			
IL	COMED						\$ 25,739	\$ 80,703	\$ 23,970	\$ 9,750		\$ (1,700)	
MD	BGE						\$ 4,077	\$ 9,932					
	DPL												
	PEPCO								\$ 101				
NC	DOM						\$ 242,566	\$ 573,056	\$ 90,499	\$ 20,658			
NJ	AECO												
	JCPL						\$ 39,398	\$ 205,242					
	PSEG				\$ 44,772	\$ 63,222	\$ 109,004	\$ 357,397	\$ 77,352	\$ 89,645	\$ 7,952		
OH	AEP						\$ 158	\$ (109)					
	ATSI												
PA	APS						\$ 23,903	\$ 7,789					
	ATSI												
	DUQ												
	METED	\$ 133					\$ 25,542	\$ 71,784	\$ 44,528	\$ 1,576			
	PECO				\$ 548	\$ 478	\$ 13,391	\$ 145,840	\$ 43,852	\$ 30,533	\$ 7,813	\$ 6,360	
	PENELEC				\$ 42,989	\$ 24,903	\$ 62,435	\$ 91,883	\$ 22,731	\$ 26,841	\$ 7,831		
	PPL						\$ 5,282	\$ 20,715	\$ 8,532	\$ (56)		\$ (1,515)	
VA	AEP												
	DOM				\$ 91,386	\$ 204,478	\$ 214,367	\$ 278,428	\$ 41,636	\$ 61,426	\$ 28,004		\$ 35,700
WV	AEP						\$ 1,309	\$ 813	\$ (6)				
	APS					\$ 1,643						\$ 8,255	\$ 6,029
<b>Total</b>		<b>\$ 133</b>	<b>\$ -</b>	<b>\$ -</b>	<b>\$ 179,695</b>	<b>\$ 294,724</b>	<b>\$ 768,860</b>	<b>\$ 1,848,001</b>	<b>\$ 353,609</b>	<b>\$ 240,833</b>	<b>\$ 51,600</b>	<b>\$ 11,400</b>	<b>\$ 41,729</b>

**Day Ahead CSP Credits: \$3,790,583**



## 2012 Economic Demand Side Response Monthly Net CSP Credits Real-Time Activity

State	Zone	JAN	FEB	MAR	APR	MAY	JUN	JUL	AUG	SEP	OCT	NOV	DEC
DE	DPL							\$ 439	\$ 1,122	\$ 417	\$ 330		
IL	COMED				\$ 334	\$ 4,818	\$ 32,773	\$ 134,226	\$ 79,427	\$ 41,583	\$ 1,641	\$ 22,689	\$ 4,710
MD	BGE						\$ 147	\$ 150,792	\$ 16,046				
	DPL						\$ 8,349	\$ 20,118					
	PEPCO						\$ 27,127	\$ 74,033	\$ 17,528				
NC	DOM												
NJ	AECO							\$ 20,555					
	JCPL												
	PSEG				\$ 485	\$ 4,011	\$ 6,334	\$ 34,448	\$ 183,553	\$ 55,349	\$ 114,575	\$ 8,339	
OH	AEP						\$ 1						
	ATSI						\$ 2,173	\$ 5,218					
PA	APS						\$ 165,376	\$ 444,256	\$ 154,468	\$ 22,680	\$ 65,528		
	ATSI						\$ 340	\$ 966	\$ 260	\$ 76			
	DUQ						\$ 2,793	\$ 151	\$ 88				
	METED						\$ 10,463	\$ 15,938	\$ 28,818	\$ 4,627	\$ 787	\$ 664	\$ 12
	PECO	\$ 395		\$ 17	\$ 32	\$ 927	\$ 76,110	\$ 165,171	\$ 91,944	\$ 20,694	\$ 10,741	\$ 3,075	\$ 1,876
	PENELEC				\$ (33)	\$ 24,704	\$ 11,509	\$ 42,632	\$ 51,776	\$ 18,516	\$ 56,701	\$ 3,848	
	PPL					\$ 127	\$ 60,021	\$ 271,342	\$ 74,541	\$ 1,436	\$ 559	\$ 461	\$ 13
VA	AEP												
	DOM	\$ 8,137	\$ 14,994	\$ 6,732	\$ 14,884	\$ 155,446	\$ 277,727	\$ 489,636	\$ 428,934	\$ 288,574	\$ 267,103	\$ 293,400	\$ 87,344
WV	AEP							\$ 11,107					
	APS						\$ 4,937	\$ 41,998	\$ 56,430	\$ 9,928	\$ 40,280	\$ 14,829	
<b>Total</b>		<b>\$ 8,532</b>	<b>\$ 14,994</b>	<b>\$ 6,749</b>	<b>\$ 15,702</b>	<b>\$ 190,032</b>	<b>\$ 686,181</b>	<b>\$ 1,923,026</b>	<b>\$ 1,184,936</b>	<b>\$ 463,879</b>	<b>\$ 558,244</b>	<b>\$ 347,306</b>	<b>\$ 93,955</b>

**Real Time CSP Credits: \$5,493,535**



## 2012 RPM (ILR & DR) Demand Side Response Monthly Capacity Revenue

Zone	JAN	FEB	MAR	APR	MAY	JUN	JUL	AUG	SEP	OCT	NOV	DEC
AECO	\$343,831	\$321,649	\$343,831	\$332,740	\$343,831	\$397,836	\$411,097	\$411,097	\$397,836	\$411,097	\$397,836	\$411,097
AEP	\$5,390,887	\$5,043,088	\$5,390,887	\$5,216,988	\$5,390,887	\$411,388	\$425,101	\$425,101	\$411,388	\$425,101	\$411,388	\$425,101
APS	\$3,410,799	\$3,190,748	\$3,410,799	\$3,300,774	\$3,410,799	\$179,495	\$185,478	\$185,478	\$179,495	\$185,478	\$179,495	\$185,478
ATSI	\$4,821	\$4,510	\$4,821	\$4,665	\$4,821	\$19,218	\$19,859	\$19,859	\$19,218	\$19,859	\$19,218	\$19,859
BGE	\$3,630,571	\$3,396,340	\$3,630,571	\$3,513,455	\$3,630,571	\$5,254,943	\$5,430,108	\$5,430,108	\$5,254,943	\$5,430,108	\$5,254,943	\$5,430,108
COMED	\$6,180,266	\$5,781,539	\$6,180,266	\$5,980,903	\$6,180,266	\$392,831	\$405,926	\$405,926	\$392,831	\$405,926	\$392,831	\$405,926
DAY	\$824,485	\$771,293	\$824,485	\$797,889	\$824,485	\$61,616	\$63,670	\$63,670	\$61,616	\$63,670	\$61,616	\$63,670
DEOK						\$7,921	\$8,185	\$8,185	\$7,921	\$8,185	\$7,921	\$8,185
DOM	\$3,977,804	\$3,721,172	\$3,977,804	\$3,849,488	\$3,977,804	\$297,028	\$306,929	\$306,929	\$297,028	\$306,929	\$297,028	\$306,929
DPL	\$817,336	\$764,605	\$817,336	\$790,970	\$817,336	\$1,497,145	\$1,547,049	\$1,547,049	\$1,497,145	\$1,547,049	\$1,497,145	\$1,547,049
DUQ	\$2,418	\$2,262	\$2,418	\$2,340	\$2,418	\$48,114	\$49,718	\$49,718	\$48,114	\$49,718	\$48,114	\$49,718
JCPL	\$883,220	\$826,238	\$883,220	\$854,729	\$883,220	\$1,447,382	\$1,495,628	\$1,495,628	\$1,447,382	\$1,495,628	\$1,447,382	\$1,495,628
METED	\$909,516	\$850,837	\$909,516	\$880,176	\$909,516	\$1,010,595	\$1,044,281	\$1,044,281	\$1,010,595	\$1,044,281	\$1,010,595	\$1,044,281
PECO	\$2,375,286	\$2,222,042	\$2,375,286	\$2,298,664	\$2,375,286	\$2,574,260	\$2,660,069	\$2,660,069	\$2,574,260	\$2,660,069	\$2,574,260	\$2,660,069
PENELEC	\$1,380,240	\$1,291,192	\$1,380,240	\$1,335,716	\$1,380,240	\$1,107,926	\$1,144,857	\$1,144,857	\$1,107,926	\$1,144,857	\$1,107,926	\$1,144,857
PEPCO	\$1,174,938	\$1,099,136	\$1,174,938	\$1,137,037	\$1,174,938	\$1,845,088	\$1,906,591	\$1,906,591	\$1,845,088	\$1,906,591	\$1,845,088	\$1,906,591
PPL	\$2,739,610	\$2,562,861	\$2,739,610	\$2,651,235	\$2,739,610	\$3,142,521	\$3,247,272	\$3,247,272	\$3,142,521	\$3,247,272	\$3,142,521	\$3,247,272
PSEG	\$1,468,327	\$1,373,596	\$1,468,327	\$1,420,962	\$1,468,327	\$2,278,452	\$2,354,400	\$2,354,400	\$2,278,452	\$2,354,400	\$2,278,452	\$2,354,400
RECO	\$22,526	\$21,072	\$22,526	\$21,799	\$22,526	\$14,415	\$14,896	\$14,896	\$14,415	\$14,896	\$14,415	\$14,896
<b>Total</b>	<b>\$35,536,881</b>	<b>\$33,244,179</b>	<b>\$35,536,881</b>	<b>\$34,390,530</b>	<b>\$35,536,881</b>	<b>\$21,988,172</b>	<b>\$22,721,111</b>	<b>\$22,721,111</b>	<b>\$21,988,172</b>	<b>\$22,721,111</b>	<b>\$21,988,172</b>	<b>\$22,721,111</b>

**Total Capacity Credits: \$331,094,315**

Note:

1) Values represent RPM revenue, not revenue associated with FRR plans.



## 2012 Economic Demand Side Response Monthly Real-Time Dispatch Activity

Year	Time Month	CSPs		Zone		Registrations			MWh			Registration Hours			Payments Settled
		Notified	Settled	Notified	Settled	Notified	Settled	%	Notified	Settled	%	Notified	Settled	%	
2012	1	2	1	2	1	5	2	40%	66	34	51%	16	7	44%	\$6,680
2012	2	1	1	1	1	2	2	100%	63	31	49%	7	7	100%	\$7,878
2012	3														
<i>see Note 1) below</i>		Dispatched	Settled	Dispatched	Settled	Dispatched	Settled	%	Dispatched	Settled	%	Dispatched	Settled	%	
2012	4	3	3	6	6	7	7	100%	520	514	99%	82	82	100%	\$15,702
2012	5	5	5	6	6	18	18	100%	2,164	1,735	80%	327	327	100%	\$190,032
2012	6	12	12	14	14	326	326	100%	14,208	11,516	81%	5,829	5,829	100%	\$686,181
2012	7	18	18	15	15	371	371	100%	26,654	20,779	78%	9,444	9,444	100%	\$1,923,026
2012	8	14	14	13	13	352	352	100%	20,337	20,082	99%	5,545	5,545	100%	\$1,184,936
2012	9	8	8	10	10	120	120	100%	9,051	9,292	103%	1,907	1,907	100%	\$463,879
2012	10	4	4	9	9	23	23	100%	10,661	11,569	109%	1,794	1,794	100%	\$558,244
2012	11	4	4	9	9	59	59	100%	5,653	6,016	106%	1,137	1,137	100%	\$347,306
2012	12	2	2	5	5	8	8	100%	2,390	2,680	112%	610	596	98%	\$93,955

YTD Totals						1,291	1288	100%	91,768	84,248	92%	26,698	26,675	100%	\$5,477,819
YTD Average		7	7	8	8										

Notified (pre-745) = PJM hours dispatched - Self-schedule hours where self-schedule hour is same as dispatch hour.

Dispatched (post-745) = PJM Real-Time Dispatch hours.

Settled = All settlement hours during the PJM dispatch window (based on confirmed settlement information). For pre-745 period the settlement hours that correlate to self-schedule notification are omitted.

#### Notes:

1) FERC Order 745 went into effect April 1st. The portion of the table from April on reflects this change.

**2) Settlement information is submitted up to 60 days after the event. Therefore, YTD performance reflected in this report for the current 2 months is artificially low due to incomplete information at the time of report preparation.**



## 2012 Economic Demand Side Response Monthly Day-Ahead Activity

Time		CSPs		Zone		Registrations			MWh			Registration Hours			Payments
Year	Month	Cleared	Settled	Cleared	Settled	Cleared	Settled	%	Cleared	Settled	%	Cleared	Settled	%	Settled
2012	1	1	1	1	1	1	1	100%	15	4	26%	2	2	100%	\$133
2012	2														
2012	3														
<b>see Note 1) below</b>		Cleared	Settled	Cleared	Settled	Cleared	Settled	%	Cleared	Settled	%	Cleared	Settled	%	
2012	4	2	2	4	4	5	5	100%	4,338	4,839	112%	720	720	100%	\$179,695
2012	5	3	3	5	5	7	7	100%	6,220	6,981	112%	536	536	100%	\$294,724
2012	6	9	9	12	12	24	24	100%	11,345	12,100	107%	1,612	1,612	100%	\$768,860
2012	7	10	10	12	12	33	33	100%	21,581	22,752	105%	2,973	2,973	100%	\$1,848,001
2012	8	9	9	10	10	21	21	100%	6,786	5,802	86%	1,144	1,144	100%	\$353,609
2012	9	5	5	8	8	14	14	100%	4,419	4,658	105%	694	694	100%	\$240,833
2012	10	3	3	4	4	7	7	100%	1,042	1,169	112%	216	216	100%	\$51,600
2012	11	2	2	4	4	5	5	100%	9,185	306	3%	174	174	100%	\$11,400
2012	12	1	1	2	2	2	2	100%	1,154	1,199	104%	32	32	100%	\$41,729

YTD Totals 119    119    100%    66,084    59,810    91%    8,103    8,103    100%    \$3,790,583

YTD Average 5    5    6    6

Cleared = All hours when resource offered into Day-Ahead Market and the offer(s) was accepted by PJM.

Settled = Measure of Real-Time fulfillment of the cleared Day-Ahead offer(s) (based on confirmed settlement information).

**Notes:**

1) FERC Order 745 went into effect April 1st. The portion of the table from April on reflects this change.

**2) Settlement information is submitted up to 60 days after the event. Therefore, YTD performance reflected in this report for the current 2 months is artificially low due to incomplete information at the time of report preparation.**



## 2012 Economic Demand Side Response Monthly Self-Scheduled Activity

Year	Time Month	CSPs		Zone		Registrations			MWh			Registration Hours			Payments Settled
		Notified	Settled	Notified	Settled	Notified	Settled	%	Notified	Settled	%	Notified	Settled	%	
2012	1	3	2	4	2	8	3	38%	284	233	82%	299	31	10%	\$1,852
2012	2	2	2	2	1	7	2	29%	313	362	115%	194	6	3%	\$7,116
2012	3	3	2	4	2	12	3	25%	442	367	83%	329	19	6%	\$6,749
<b>see Note 1) below</b>		Notified	Settled	Notified	Settled	Notified	Settled	%	Notified	Settled	%	Notified	Settled	%	
2012	4														
2012	5														
2012	6														
2012	7														
2012	8														
2012	9														
2012	10														
2012	11														
2012	12														

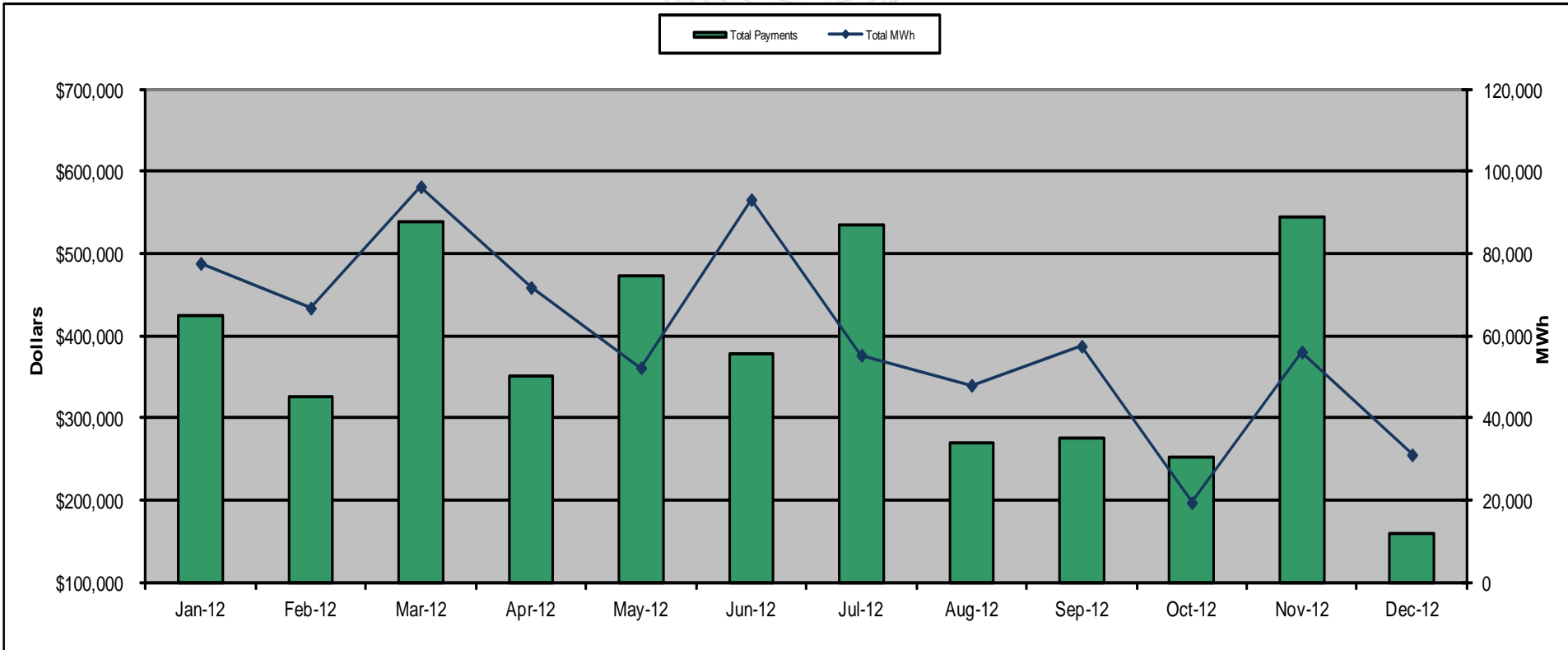
YTD Totals 27 8 30% 1,040 962 92% 822 56 7% \$15,716

YTD Average 3 2 3 2

Notified = CSP self-scheduled volume.  
Settled = All settlement hours submitted for self-scheduled notifications (based on confirmed settlement information).

- Notes:
- 1) FERC Order 745 went into effect April 1st. The portion of the table from April on reflects this change.
  - 2) **Settlement information is submitted up to 60 days after the event. Therefore, YTD performance reflected in this report for the current 2 months is artificially low due to incomplete information at the time of report preparation.**

## 2012 Demand Side Response Synchronized Reserve Participation

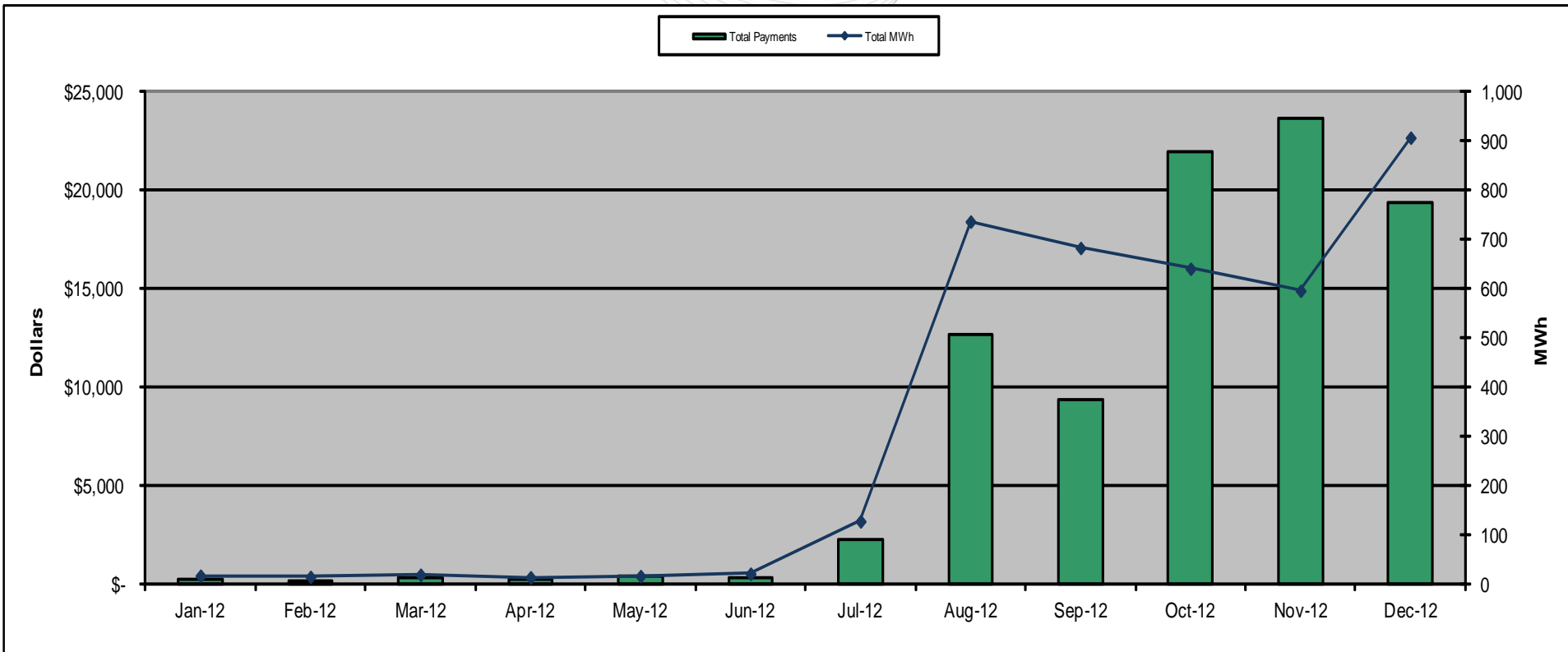


	Jan-12	Feb-12	Mar-12	Apr-12	May-12	Jun-12	Jul-12	Aug-12	Sep-12	Oct-12	Nov-12	Dec-12	Total
<b>Total MWh</b>	77,619	66,736	96,276	71,751	52,220	93,121	55,266	47,966	57,462	19,383	56,070	31,027	724,897
<b>Total Payments</b>	\$423,818	\$325,929	\$538,356	\$350,053	\$472,576	\$377,927	\$533,992	\$270,179	\$274,462	\$251,324	\$543,641	\$159,138	\$4,521,396
<b>\$ / MWh</b>	\$5.46	\$4.88	\$5.59	\$4.88	\$9.05	\$4.06	\$9.66	\$5.63	\$4.78	\$12.97	\$9.70	\$5.13	\$6.24

MWh = sum of the settled MW  
(Example: 1 MW load available for 12 hours = 12 MWh)

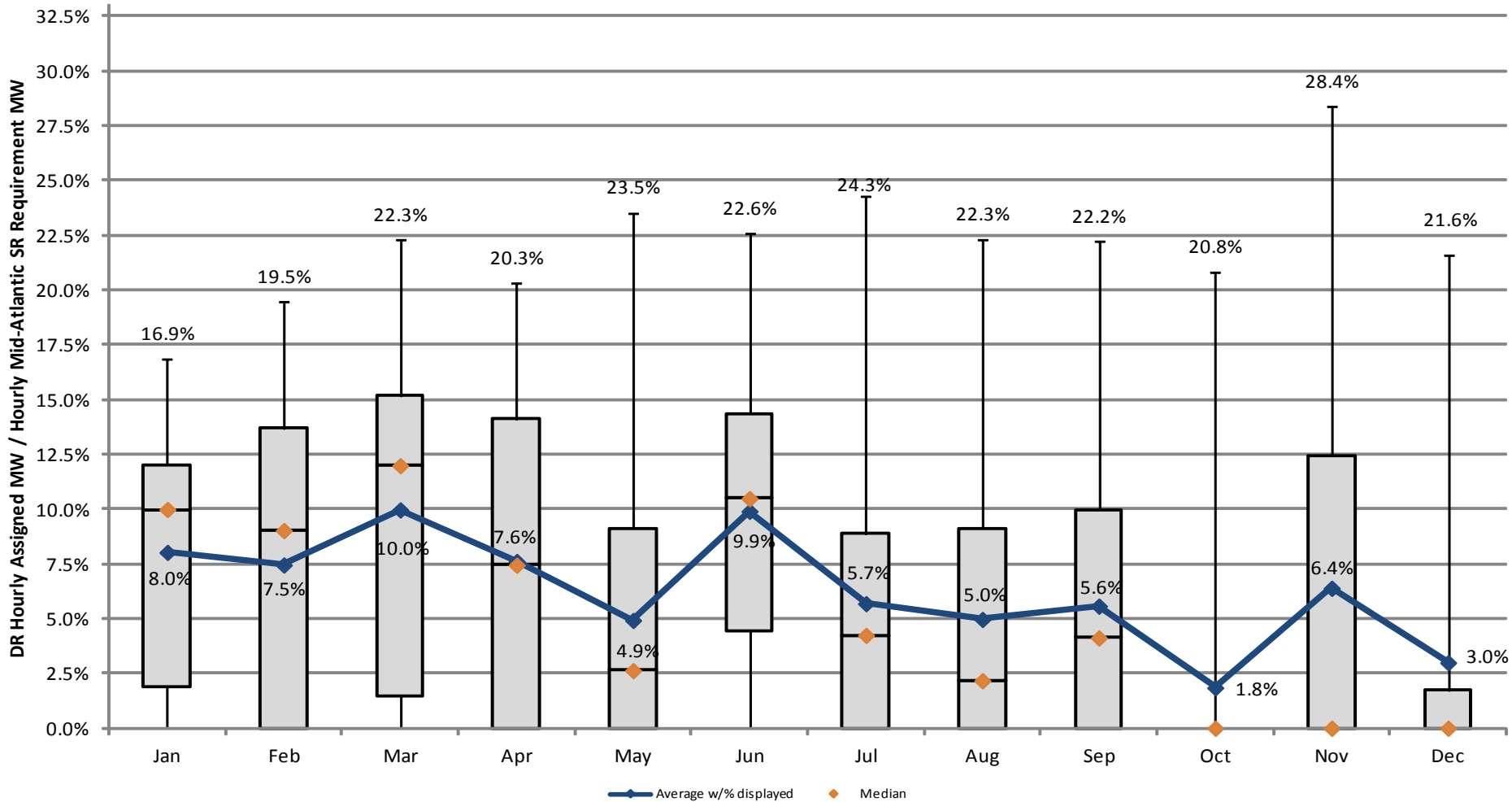


## 2012 Demand Side Response Regulation Participation



	Jan-12	Feb-12	Mar-12	Apr-12	May-12	Jun-12	Jul-12	Aug-12	Sep-12	Oct-12	Nov-12	Dec-12	Total
<b>Total MWh</b>	15.8	13.6	17.9	12.6	15.0	19.9	126	735	681	639	594	905	3,774
<b>Total Payments</b>	\$190.61	\$156.34	\$246.50	\$187.22	\$322.67	\$283.86	\$2,256	\$12,602	\$9,274	\$21,868	\$23,587	\$19,316	\$90,292
<b>\$ / MWh</b>	\$12.05	\$11.53	\$13.79	\$14.89	\$21.52	\$14.29	\$17.86	\$17.15	\$13.62	\$34.23	\$39.70	\$21.35	\$23.92

MWh = sum of the settled MW  
(Example: 1 MW load available for 12 hours = 12 MWh)



Note:

- 1) Demand Response are Tier 2 resources.
- 2) Percents shown on upper whisker are maximum hourly DR percentage of Total Mid-Atlantic SR requirement (Jan-Sep) and MAD SR Requirement (Oct forward).